

# Condensing and Plotting PDF files on Printers & Plotters (For Adobe Illustrator CS6)

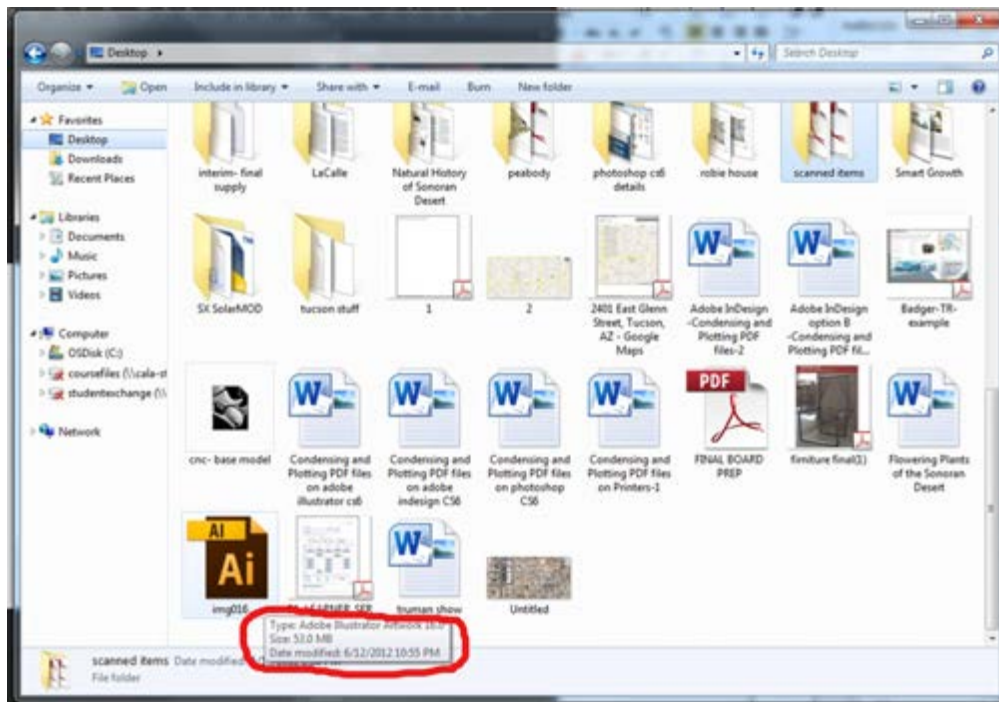
## Important information:

- In order to plot your file with the best quality the quality as possible, it is important to flatten your file as small as possible. The smaller the file as flatten, the quicker the plotter will print your file. If you have a PDF file with at least 20 MB or larger, it is more likely that when you plot your file, it will take longer to print because the size too large. It is strongly recommended that you flatten your PDF file as small as you can in order to have a quicker plot.

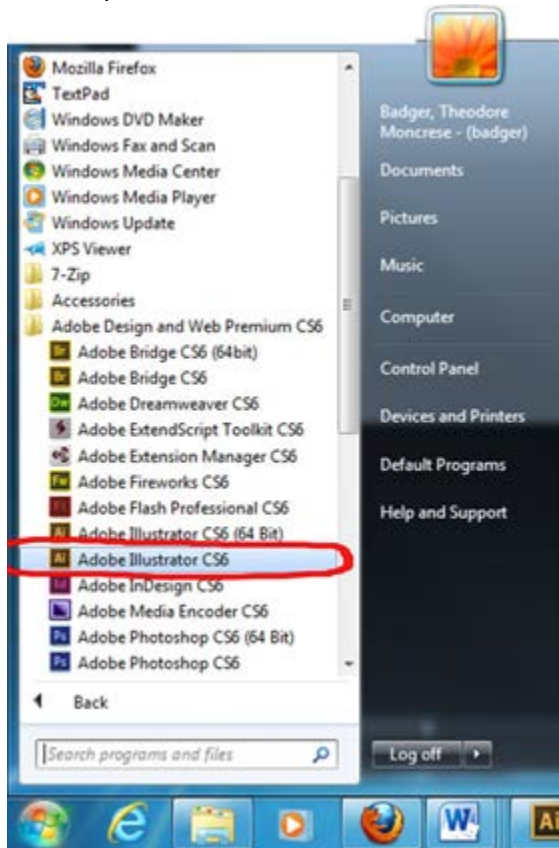
## Flattening your file from Adobe Illustrator

1. Before you open your file in either Photoshop or illustrator, check to see how big your document is first.

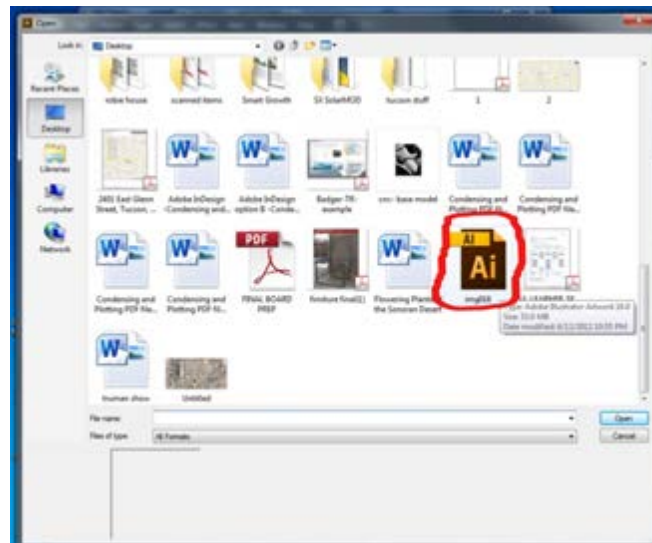
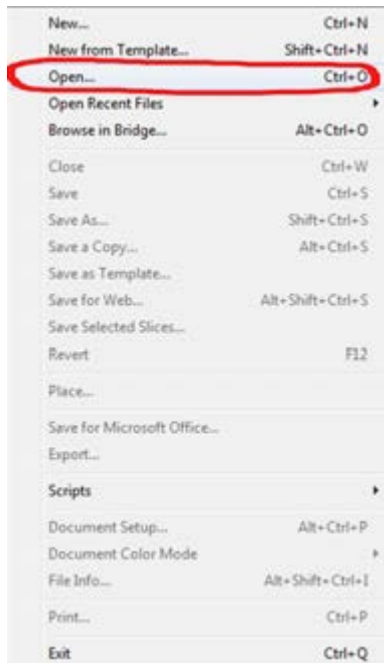
For example....The file that I want to open that is circled is 53 MB...in order to have a quicker print with high quality; you want to make that file smaller.



2. Go to open Adobe or Illustrator



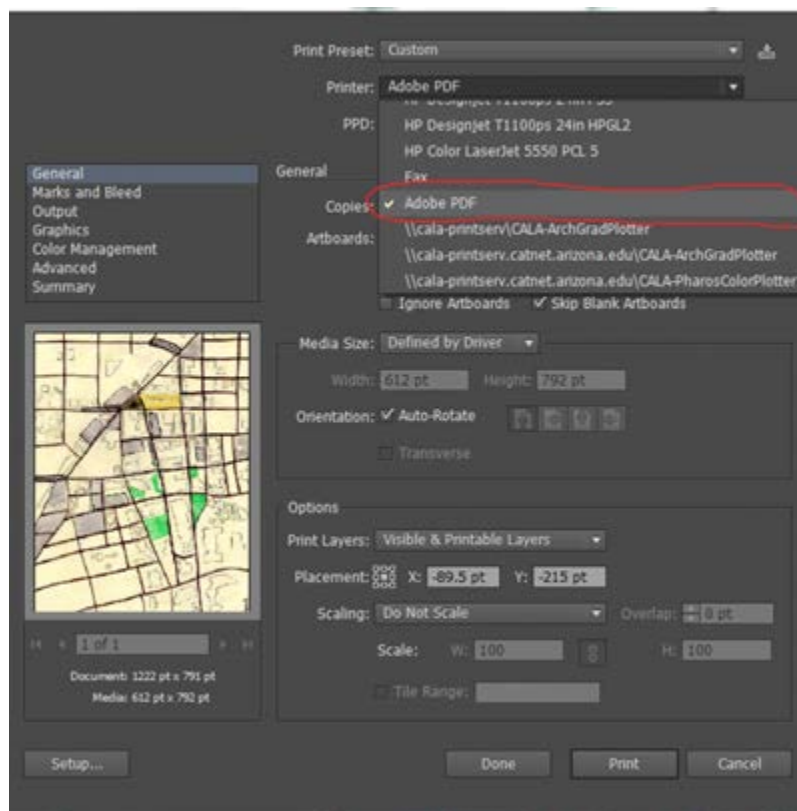
3. Open your selected file from Illustrator.....



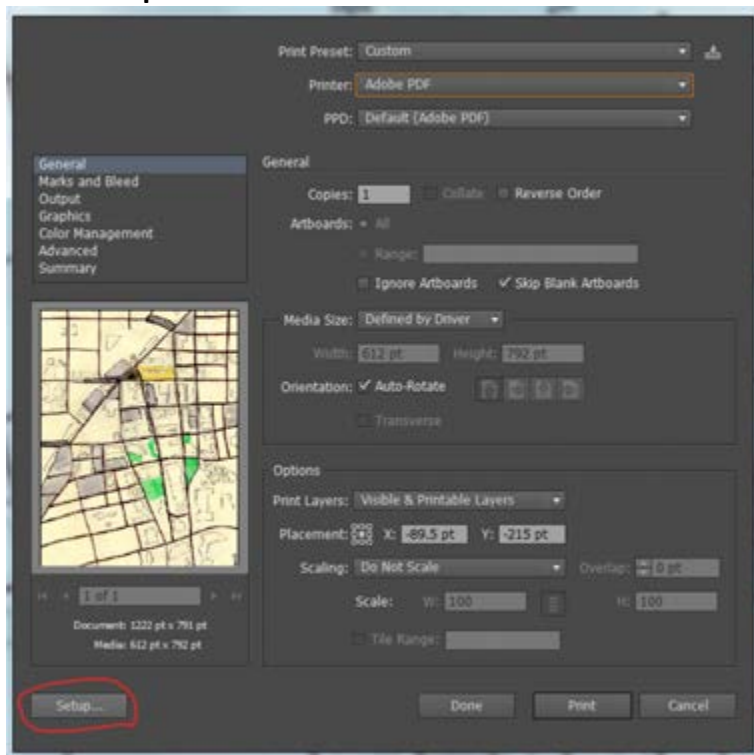
4. Go to File and select print....



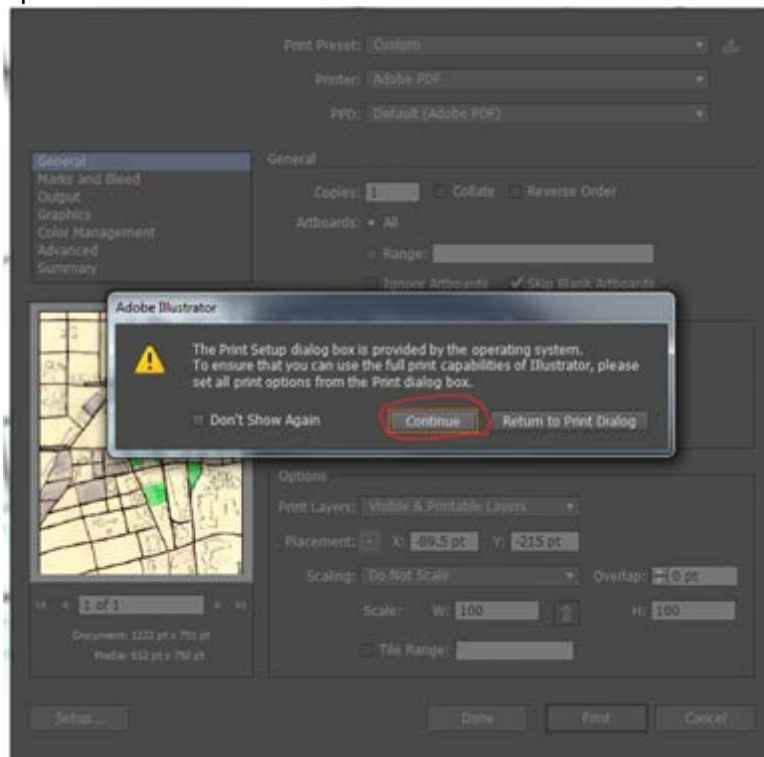
5. Once you are in the printing setup...go to the top where it says **printer:** and scroll down and select **adobe PDF**;



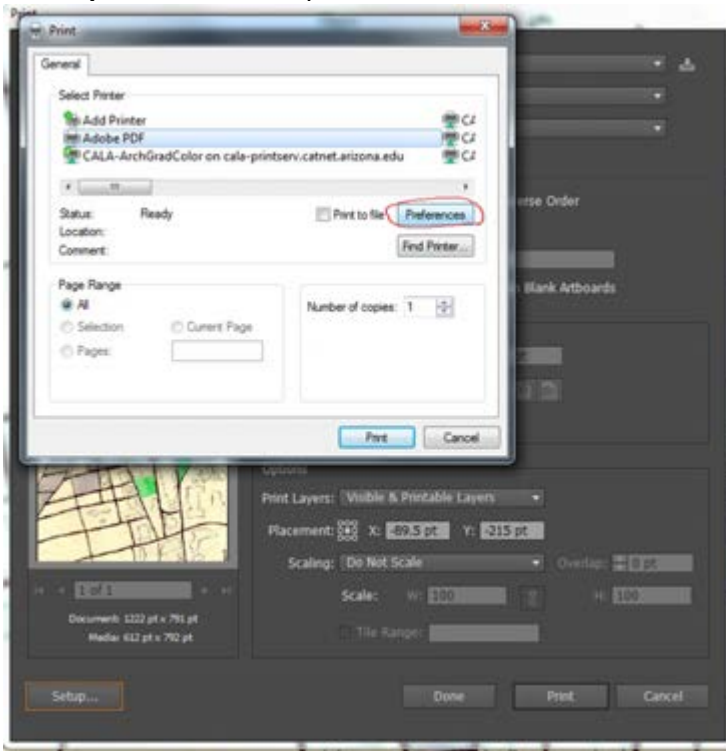
6. Go to **setup....**



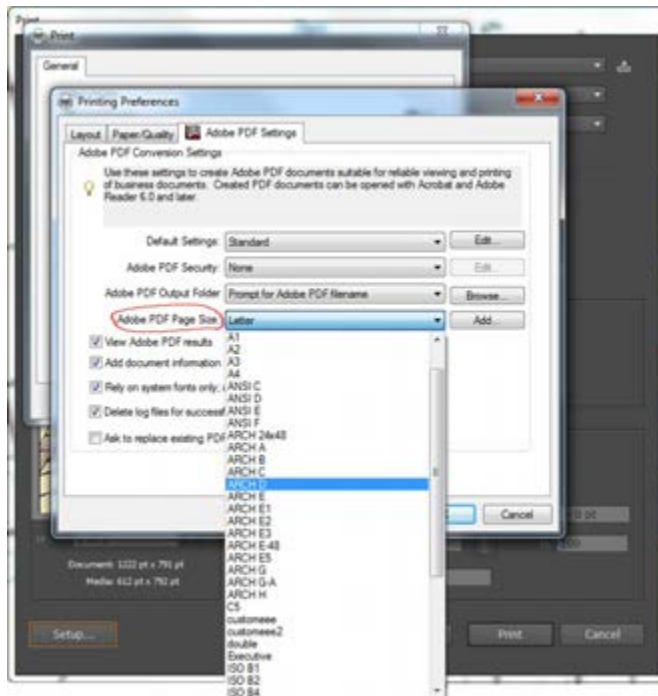
For Adobe Illustrator....select **setup** and press **continue** when the warning box comes up....



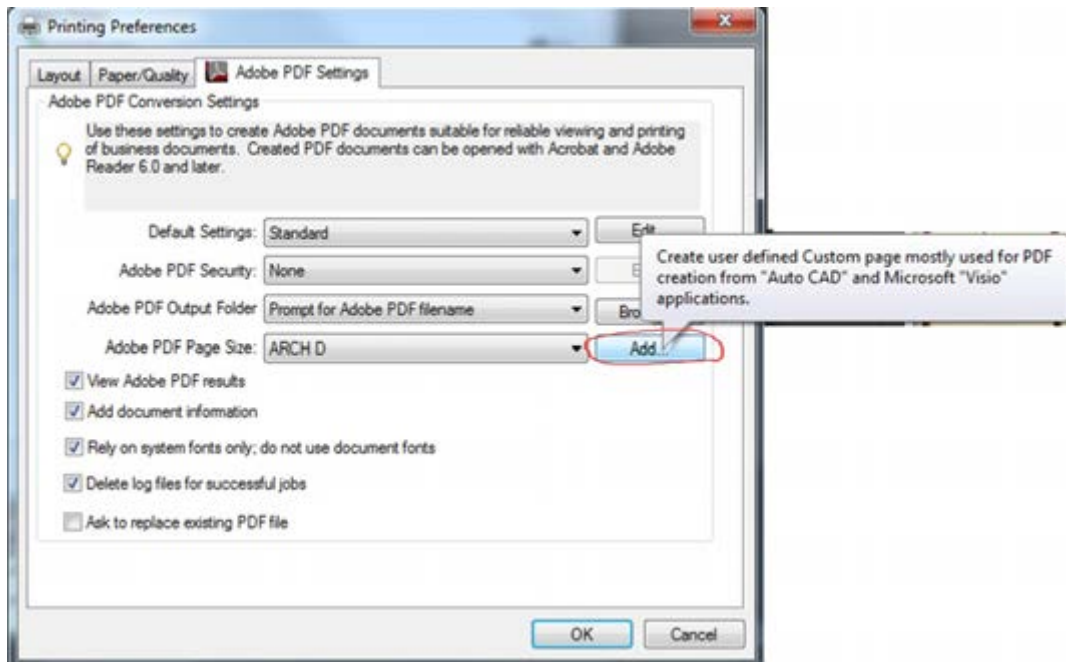
Select **preferences** to open the *Adobe PDF Document Properties...*



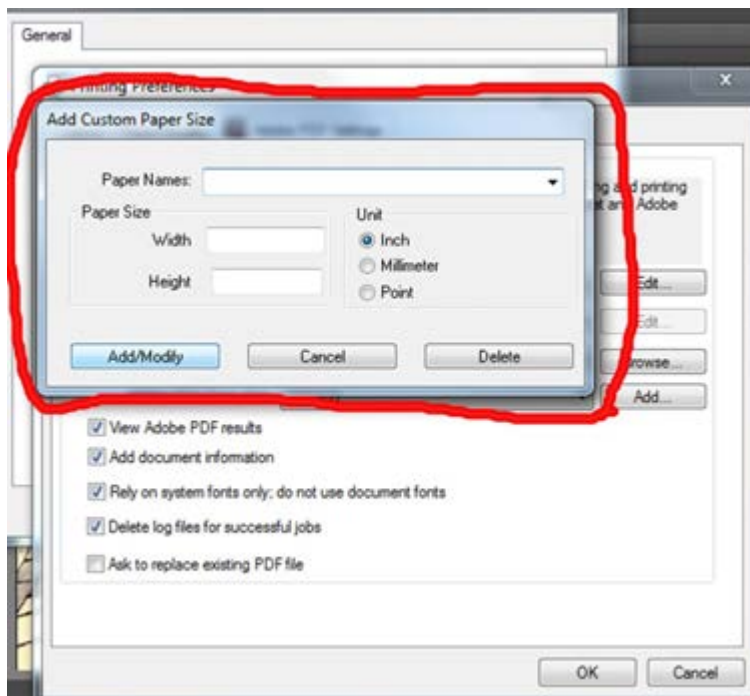
7. Once you've clicked **preferences**, you will see *Adobe PDF Document properties*, go to **Adobe PDF page setup** and select your appropriate size sheet.....  
(i.e.- ARCH D)



If you need to setup your own custom...,go to 'Add' (if not necessary...**skip to step 8**)



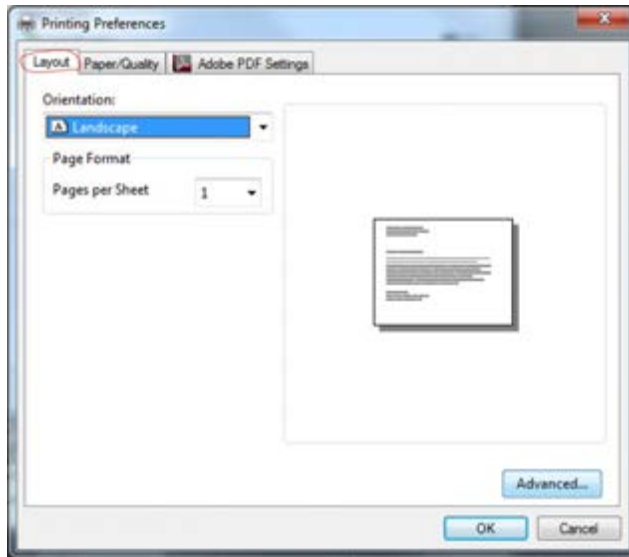
First, write a new name to define your custom size....then write down your selected length and width for your custom sheet.....then select add/modify once you're finished.



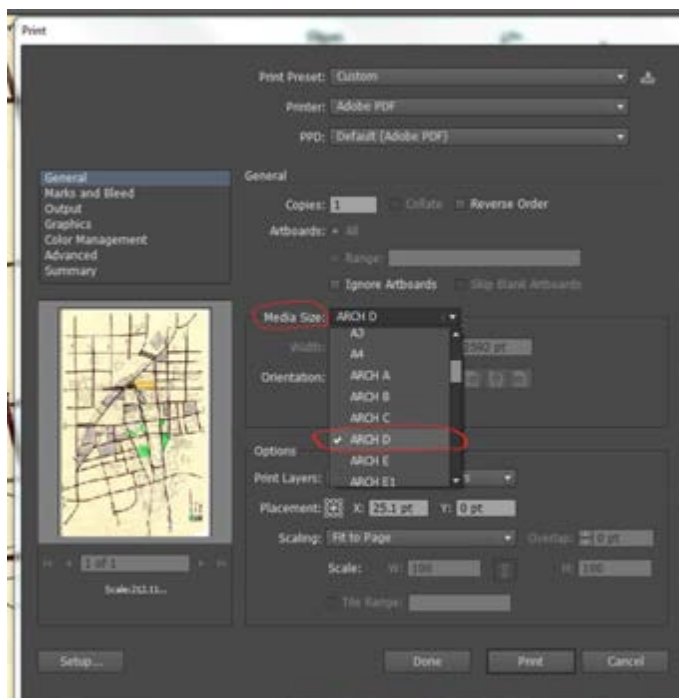


- Before you finish and select *print*...go to layout and make sure that your document is oriented and formatted in either **landscape** or **portrait**...and check your **paper/quality**.

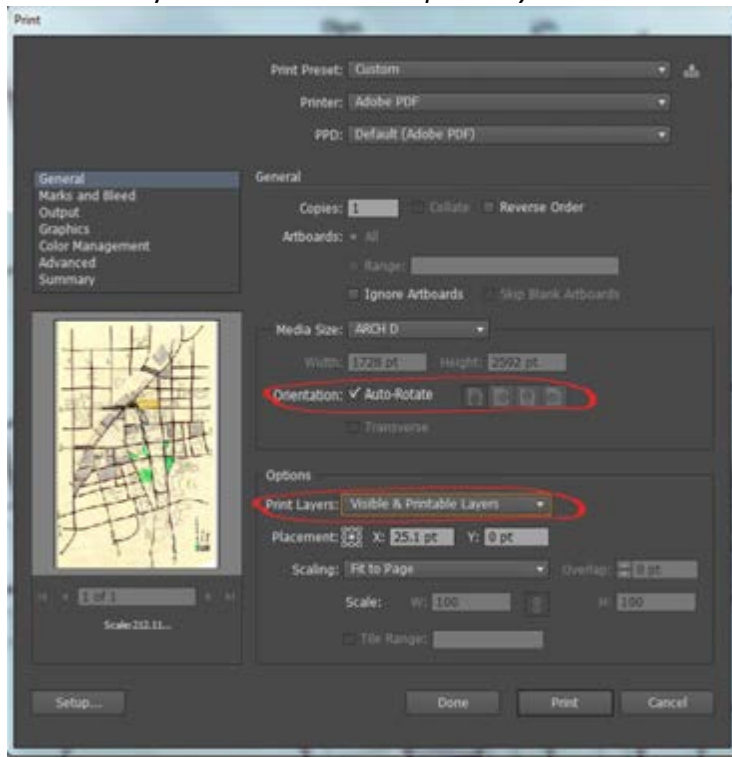
Once you're finalized....press 'ok'



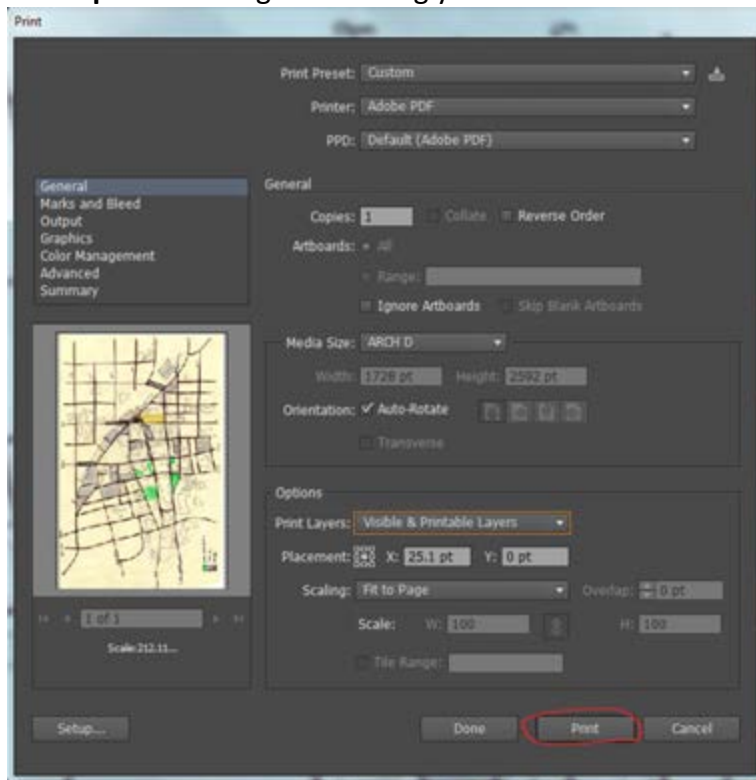
- Once you go back to the main illustrator print settings....go to *media size* and select your appropriate sheet size you want to use....(i.e.- ARCH D)



Make sure your *orientation* and *print layers* is all correct the way you wanted...

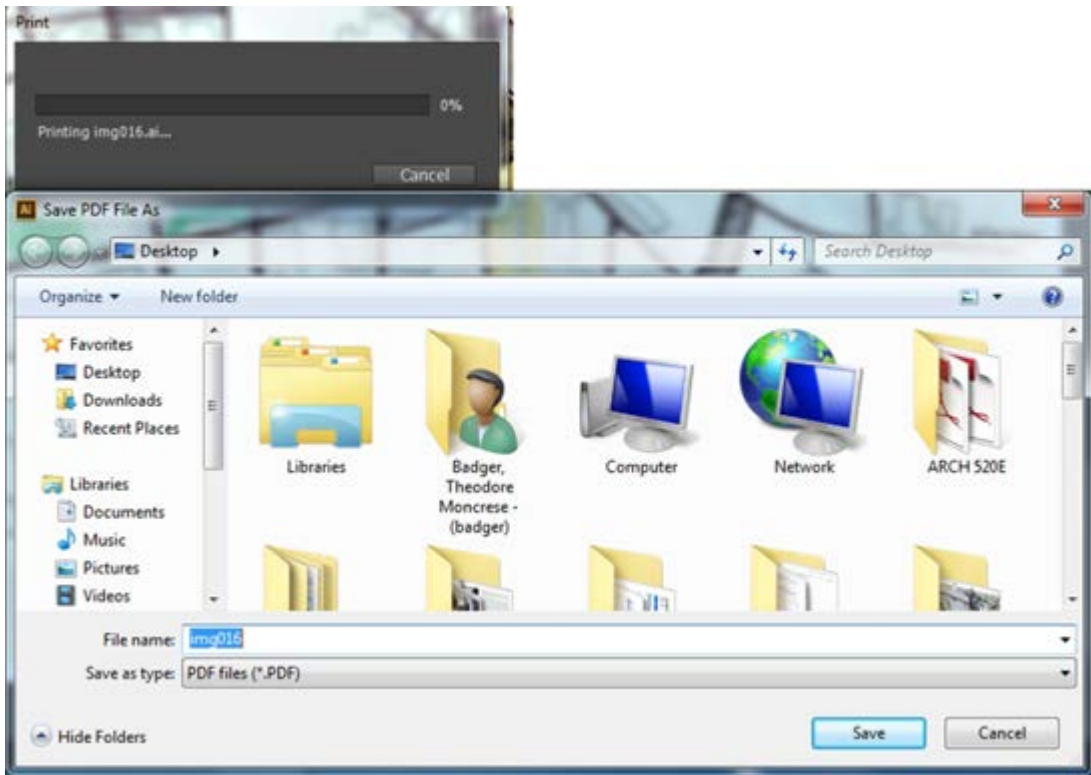


10. Select **print....**to begin flattening your file

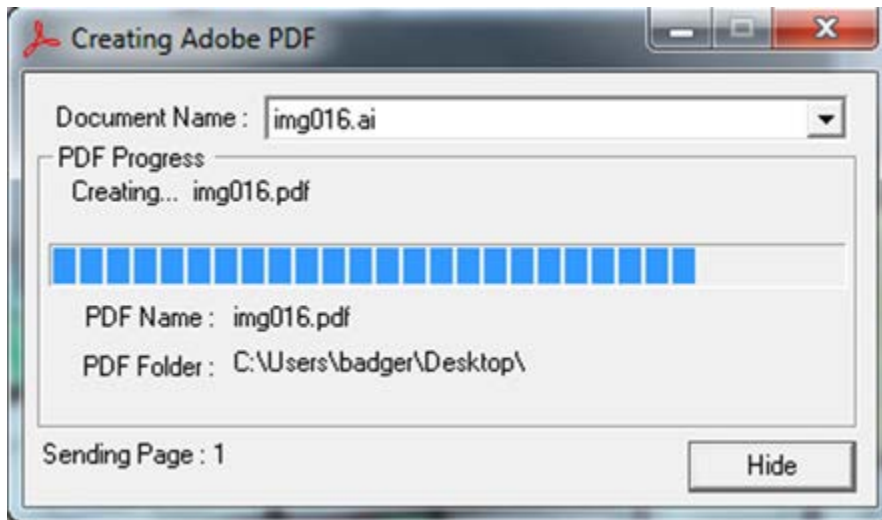




Once you selected print...you will be directed to **Save your PDF file....**choose where you would like to save your PDF file before you flatten it....



11. Once you have placed your PDF file...you will begin to create you flattened PDF file. You will see a progress bar until is it 100% complete. Wait for all the blue bars to reach to 100%...then your PDF will be completed.



12. After the *Creating the PDF* box disappears...your new PDF file should appear on the screen. Make sure that when you check your new PDF file...you should see that the file is smaller in MB. (*Remember: the smaller the PDF file, the quicker it will be to print on a plotting machine*)

