

Condensing and Plotting PDF files on Printers & Plotters (For Adobe Photoshop CS6)

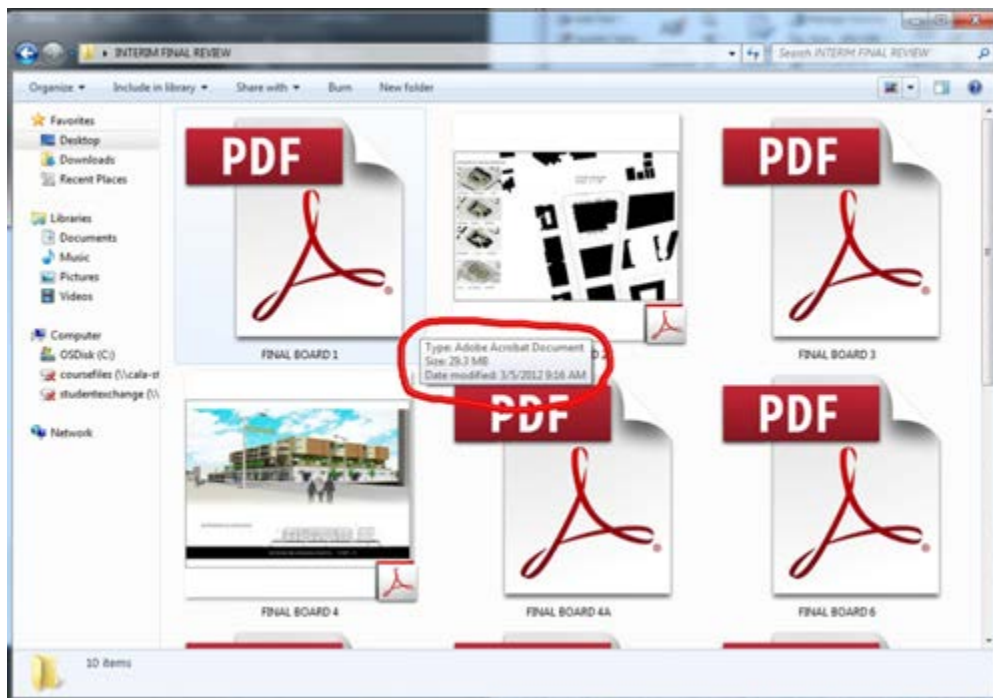
Important information:

- In order to plot your file with the best quality the quality as possible, it is important to flatten your file as small as possible. The smaller the file as flatten, the quicker the plotter will print your file. If you have a PDF file with at least 20 MB or larger, it is more likely that when you plot your file, it will take longer to print because the size too large. It is strongly recommended that you flatten your PDF file as small as you can in order to have a quicker plot.

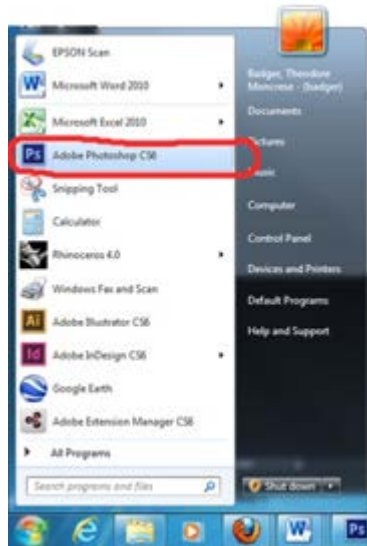
Flattening your file from Adobe Photoshop & Adobe Illustrator

1. Before you open your file in either Photoshop or illustrator, check to see how big your document is first.

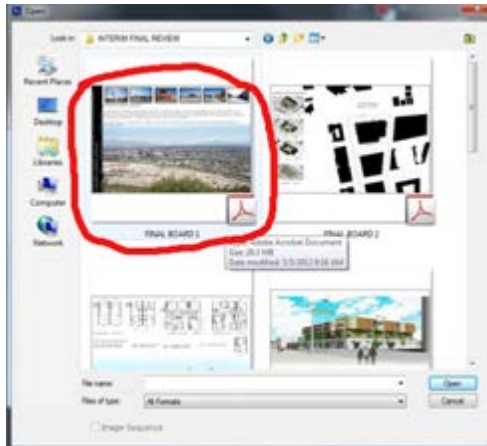
For example....The file that I want to open that is circled is 29.3 MB...in order to have a quicker print with high quality; you want to make that file smaller.



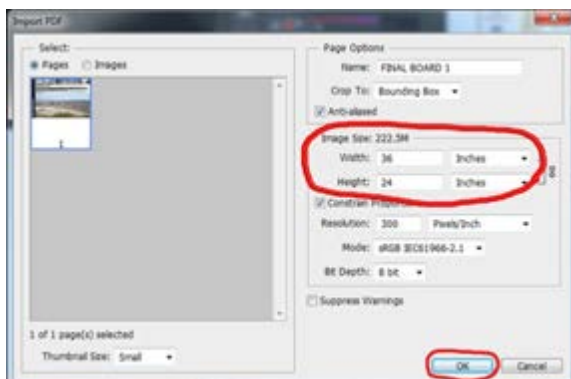
2. Go to open either Photoshop



3. Go to file...open....and Open your selected file from Photoshop



(SN: Make sure before you open that you check to make sure that your file is the right image size you want it to be.....)

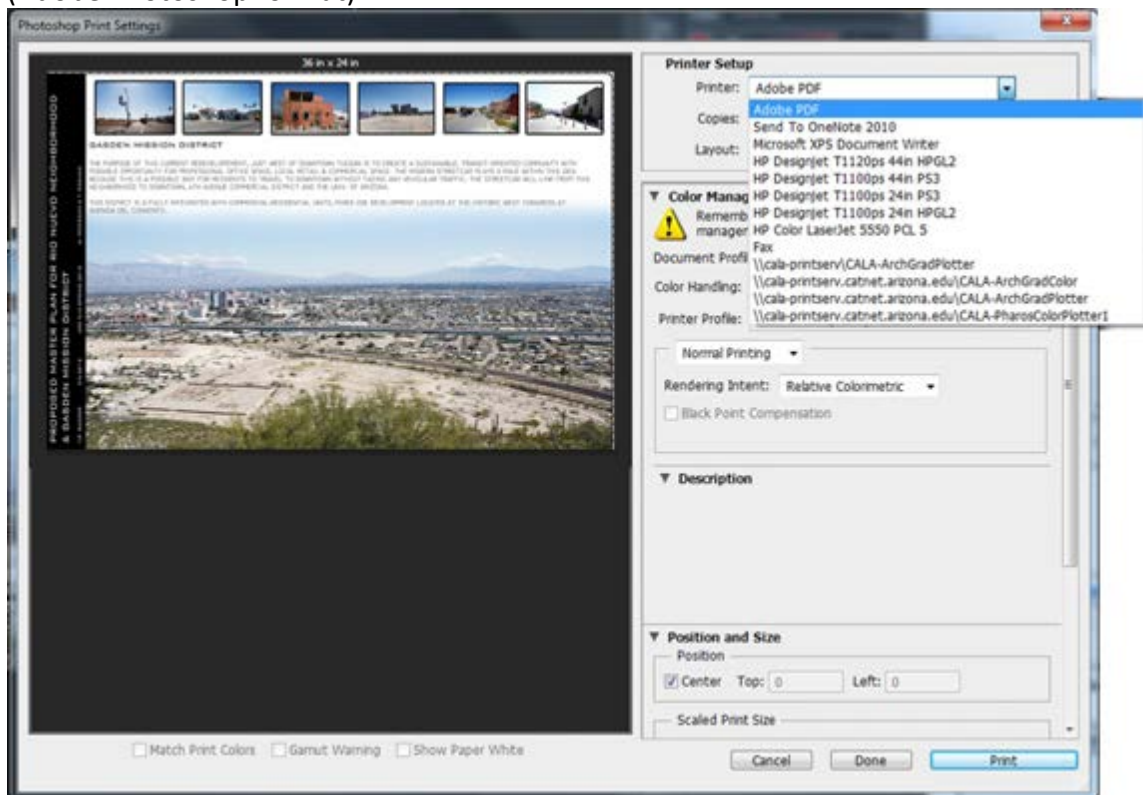


4. Go to File and select print.....

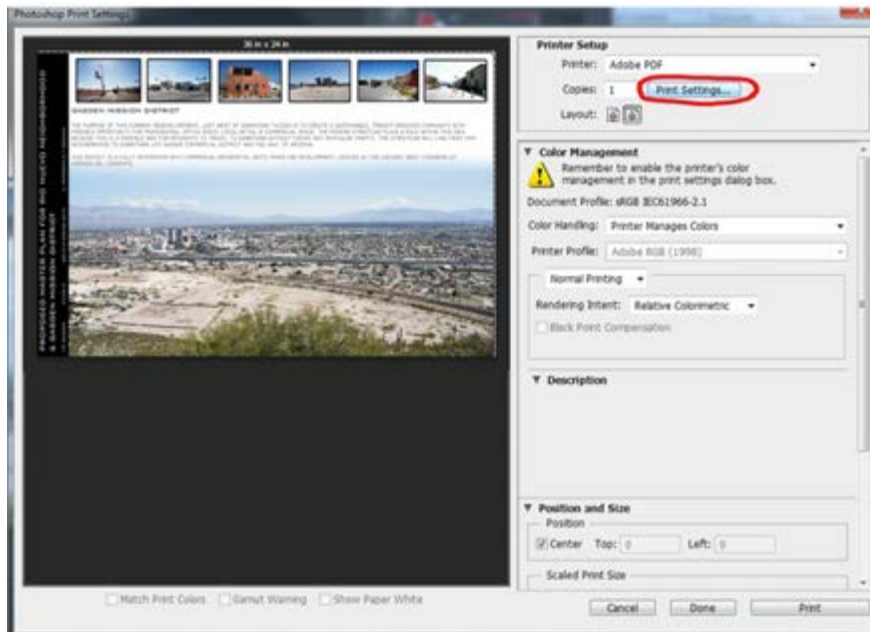


5. Once you are in the printing setup...go to the top where it says **printer settings:** and scroll down and select **Adobe PDF**;

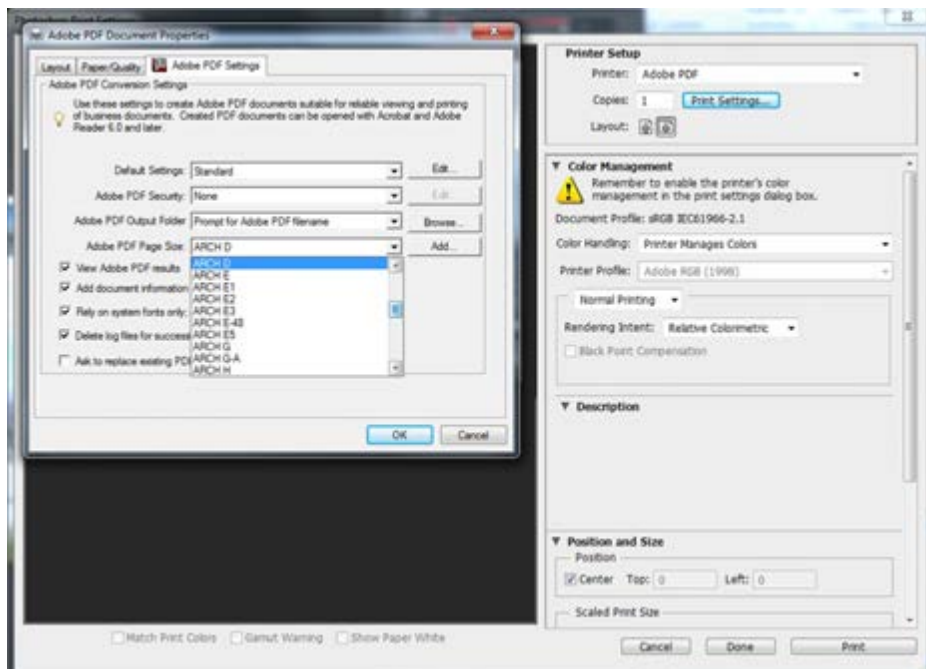
(Adobe Photoshop format)



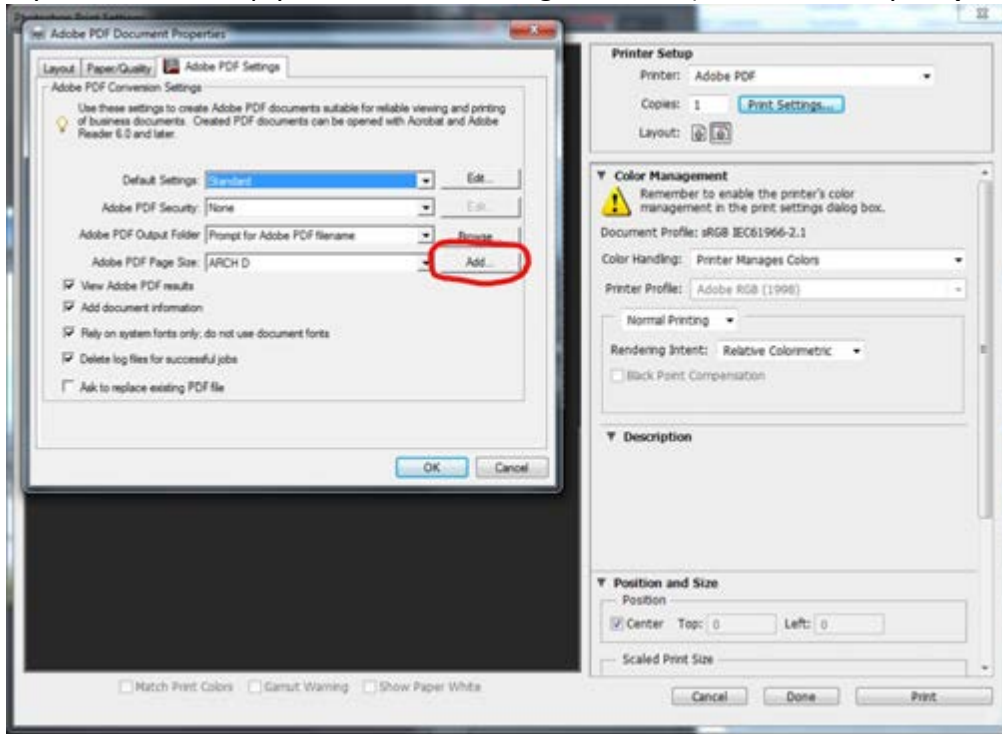
6. Go to **print settings** in order to select your appropriate sheet size...



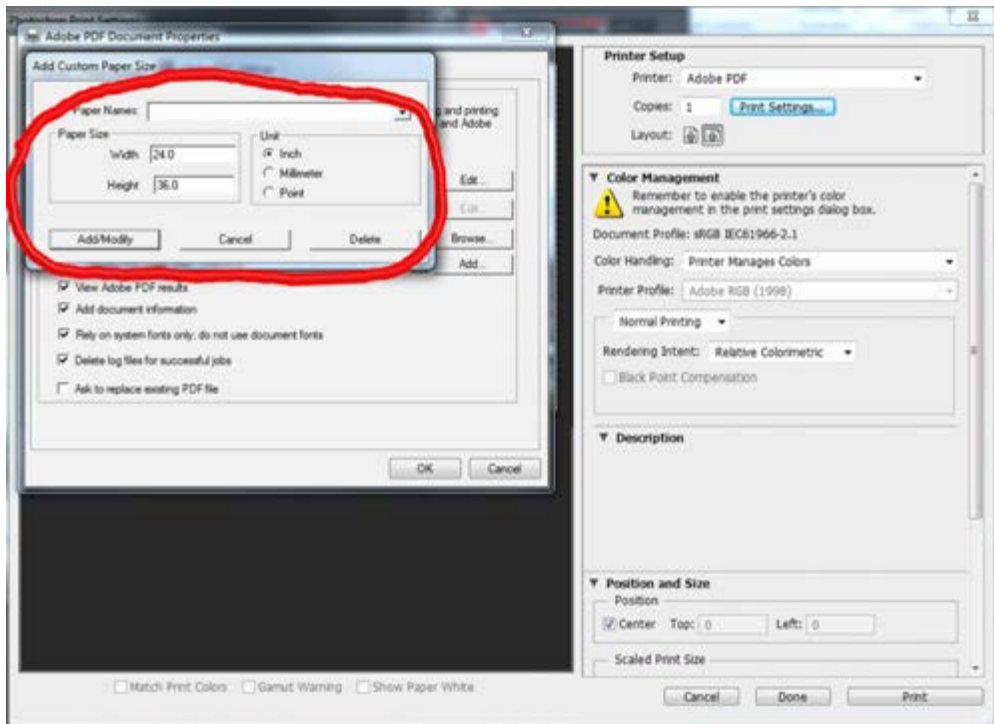
7. Once you open up *Adobe PDF Document properties*, go to **Adobe PDF page setup** and select your appropriate size sheet.....
(i.e.- ARCH D)



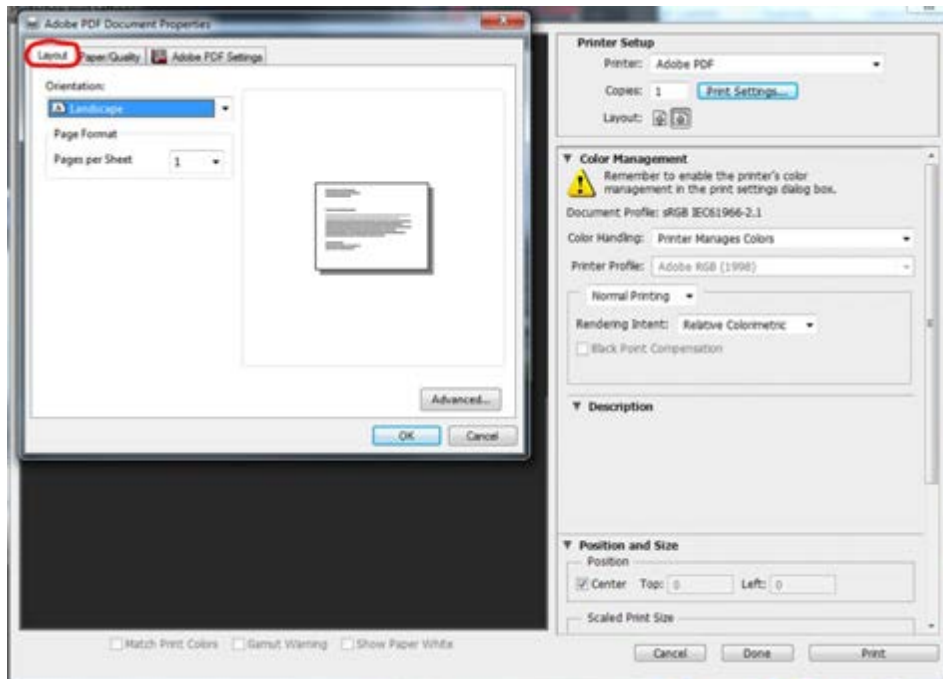
If you need to setup your own custom.....go to 'Add' (if not necessary..skip to step 8)



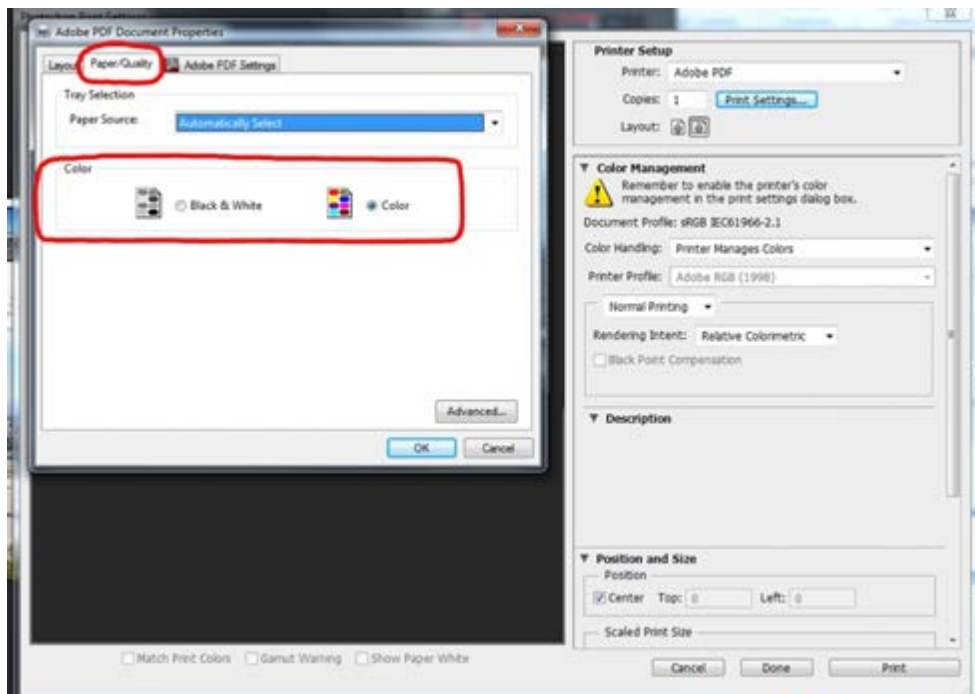
First, write a new name to define your custom size....then write down your selected length and width for your custom sheet.....then select add/modify once you're finished.



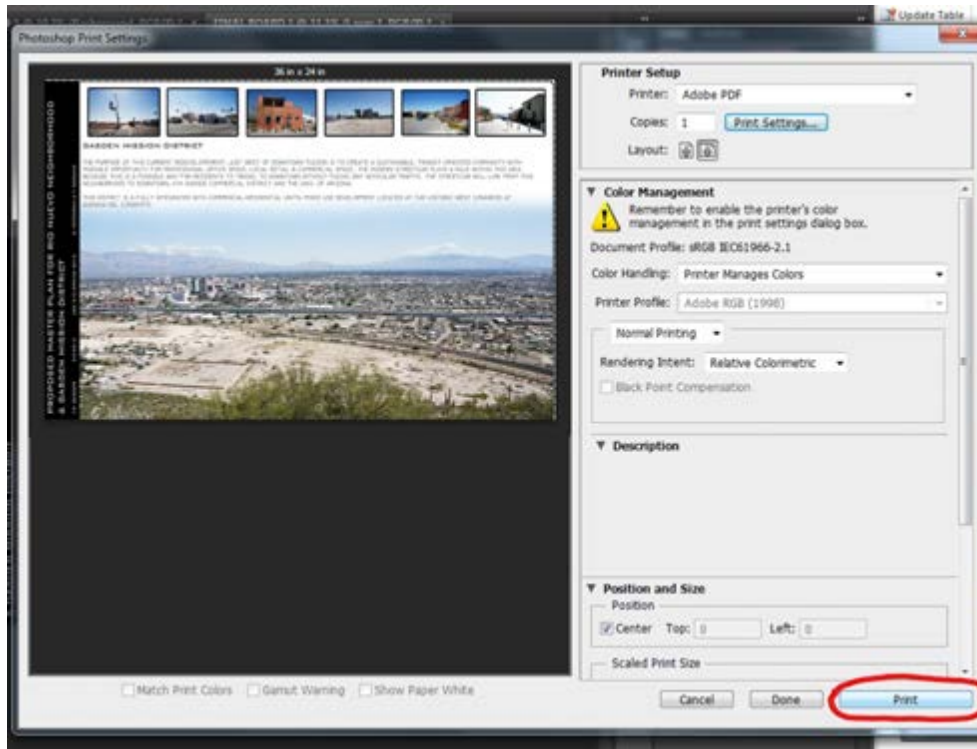
8. Before you finish and select *print...go* to layout and make sure that your document is oriented and formatted in either **landscape** or **portrait...**



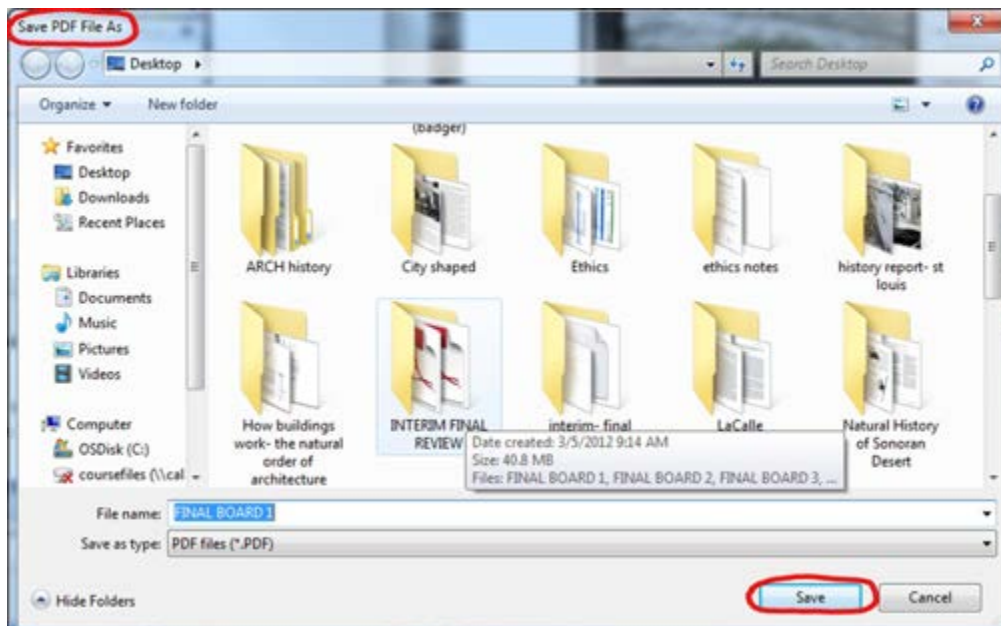
Also, make sure your paper quality is set to either **'black & white'** or **'color'**



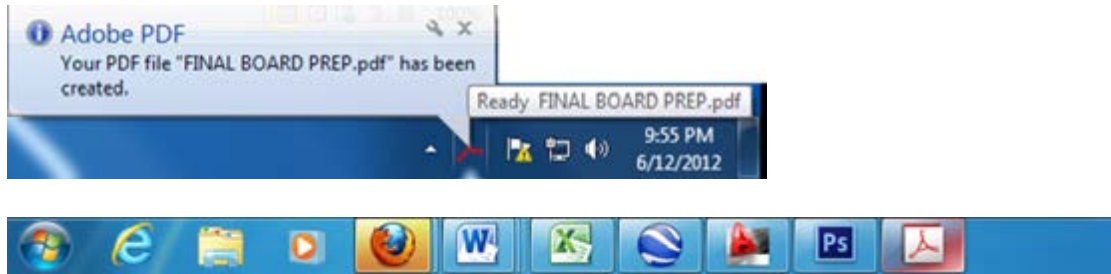
9. Select **print....**to begin flattening your file



Once you selected print...you will be directed to **save your PDF file....**choose where you would like to save your PDF file before you flatten it....*(Remember where you saved your file)*



10. Once you have placed your PDF file...you will begin to create your flattened PDF file. Wait patiently until your file shows up in a PDF format at the bottom of your screen...then select.



11. After the *Creating the PDF* box disappears...your new PDF file should appear on the screen. Make sure that when you check your new PDF file...you should see that the file is smaller in MB. (*Remember: the smaller the PDF file, the quicker it will be to print on a plotting machine*)

