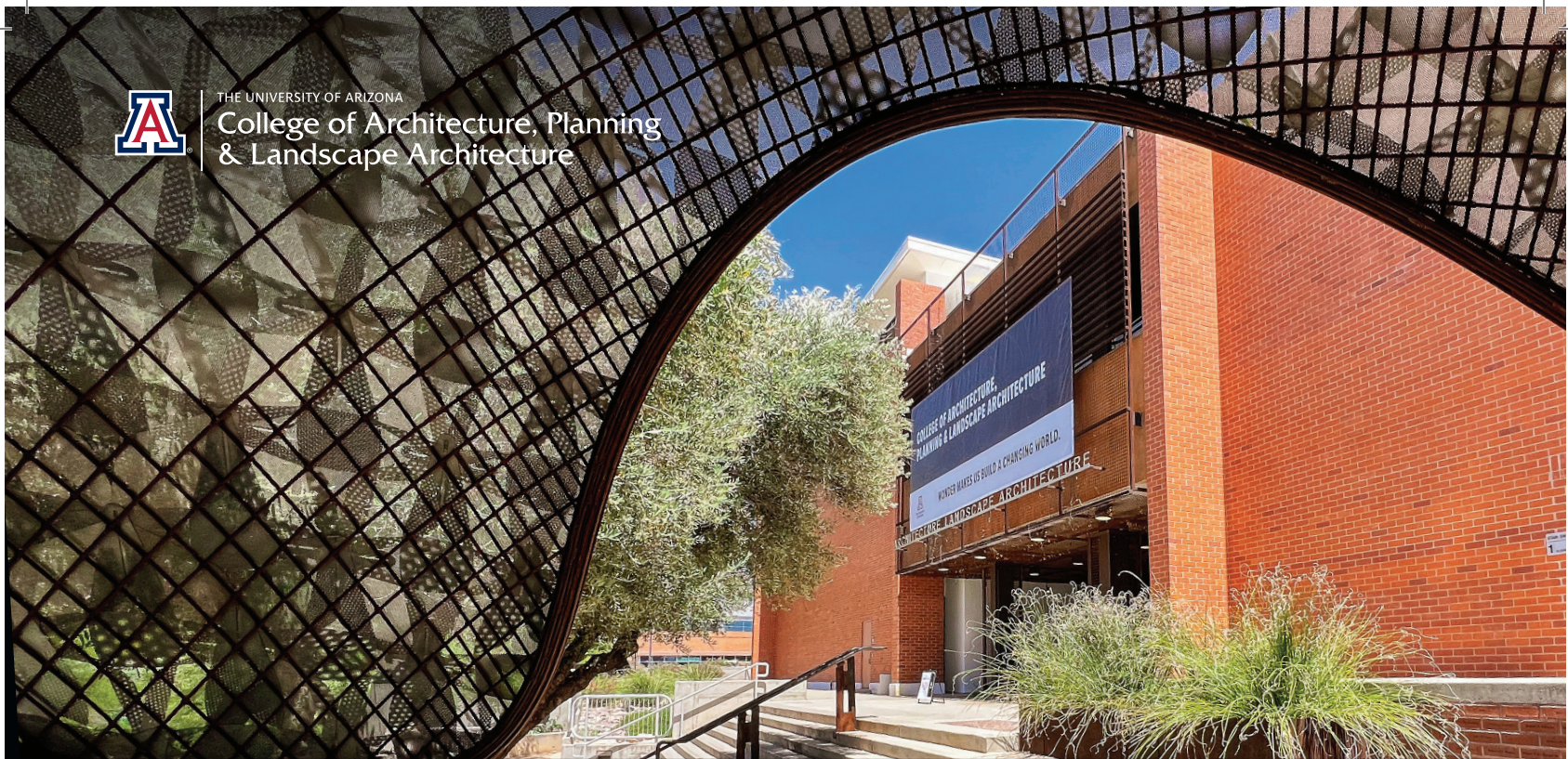




THE UNIVERSITY OF ARIZONA

College of Architecture, Planning
& Landscape Architecture



**ARE YOU
READY TO
BUILD A CHANGING WORLD?**



Here in the multicultural heart of the Sonoran Desert—in courses offered on campus and online—you'll learn to plan, develop, design and build innovative spaces and places that endure.



Student work on the cover: *Undefined Boundaries* by Ana Astiazaran '22 B Arch, 2021 COTE Top Ten for Students Award for Sustainable Design Excellence (left center); *New York City 100-Year Floodplain* by Glenn Ingram '23 MS Urban Planning, Arizona Geographic Information Council 2021 Best Student Map Award (bottom left); *Eco Park* by Nickolas Witt '23 B Arch, 2022 Design Excellence Honor Award (bottom right).





OUR RANKINGS

#1 Best Online Master's Degree
in Real Estate
Study.com, 2021

#8 Public (#12 Overall) Most Hired
From Architecture School
(B Arch, M Arch and MS Arch;
Group 3: 50-69 Graduates)
DesignIntelligence, 2019-2021

#8 Top Urban Planning
Program without a PhD
Planetizen, 2020-2021

#9 Public (#23 Overall)
Most Admired School,
Architecture Undergraduate
Program
DesignIntelligence, 2019-2021

#11 Best Value Sustainability
Bachelor's Degree
Value Colleges, 2022

#13 Public (#14 Overall)
Most Hired-From Landscape
Architecture School
(MLA; Group 3: Less than
20 Graduates)
DesignIntelligence, 2019-2021

“At CAPLA, you feel
like you are part of
something bigger
than yourself, which
encourages you to be the
best version of yourself.

– Emma Nakpairat '23 BLA

CAPLA

BY THE NUMBERS

AS OF FALL 2021

8

DEGREE PROGRAMS

- Bachelor of Architecture
- Bachelor of Landscape Architecture
- Bachelor of Science in Sustainable Built Environments
- Master of Architecture
- Master of Science in Architecture
- Master of Landscape Architecture
- Master of Real Estate Development
- Master of Science in Urban Planning

4

UNDERGRADUATE MINORS

- Architectural History and Theory
- Landscape Architecture
- Real Estate Development
- Sustainable Built Environments

3

FULLY ONLINE PROGRAMS

- Bachelor of Science in Sustainable Built Environments
- Master of Real Estate Development
- Graduate Certificate in Heritage Conservation

4

GRADUATE CERTIFICATES

- Heritage Conservation
- Real Estate Development Analysis
- Real Estate Development Finance
- Real Estate Development Practice

870

TOTAL CAPLA STUDENTS

4,317

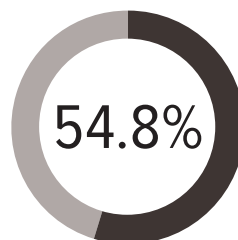
CAPLA ALUMNI

703

UNDERGRADUATE

167

GRADUATE



STUDENTS OF COLOR
Including international students



50.3% Male Students
49.7% Female Students

25

COUNTRIES
Represented in
CAPLA Student Body

47

STATES
Represented in the
CAPLA Student Body

122

STUDENTS
RECEIVING
CAPLA-AWARDED
SCHOLARSHIPS
62 scholarships
totaling \$175,530

9,000

SQUARE FEET OF MODEL AND MATERIALS LABS

131

COMMUNITY AND
INDUSTRY PARTNERS

9

STUDENT
ORGANIZATIONS

30

STUDIO
COURSES

72

CAPLA FACULTY
MEMBERS



CUTTING-EDGE FACILITIES, MAKER SPACES AND LEARNING LABORATORIES



The CAPLA Building houses extraordinary spaces—from light-filled studios to state-of-the-art computer facilities. Our Model and Materials Labs—at 9,000 square feet one of the largest and most innovative design-build spaces in the country—features labs for machining, ceramics, concrete, digital fabrication, geo-visualization, glass, laser, metal, synthetics and wood.

Just outside, the Underwood Sonoran Landscape Laboratory is a model for arid design principles of water harvesting, water reuse and the creation of desert microclimates. It's a place for gathering, with flowing water, mature trees and wildlife—a true urban oasis.

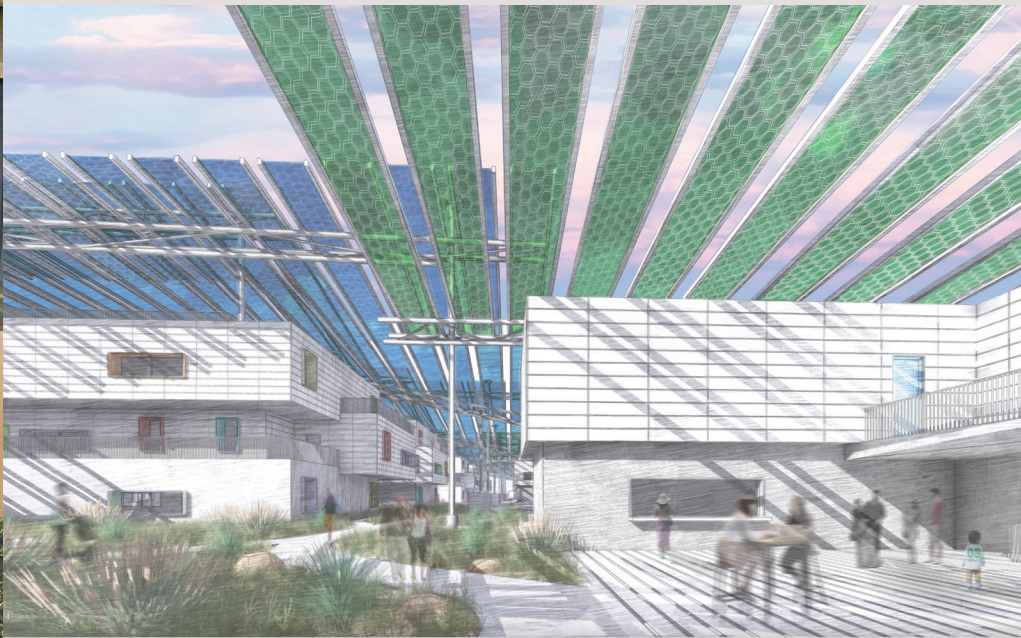


UNDERGRADUATE DEGREES

Build your future. Change the world.

As a student at CAPLA, you'll be a part of a rigorous, robust and rewarding experience designing and building community. Our programs are taught by world-class faculty in state-of-the-art facilities.

You'll find your place here and graduate ready to thrive in an essential career where you are prepared to make a difference.



The Avenue, winner of the 2022 Solar Decathlon Design Challenge Grand Prize, by Bachelor of Architecture students Andrew Norris, Jonah Cummins-Mikkalson, Alex Kolodziej and Nhan Vo.



Bachelor of Architecture

The highly ranked, five-year B Arch prepares you for professional registration and practice in the field of architecture and design. The NAAB-accredited degree combines place-based design with cutting-edge material and environmental research delivered through hands-on learning.

PROGRAM LENGTH: 5 years

UNITS: 166

*Specific application deadlines apply to this degree.
Please refer to the website.*

► [CAPLA.ARIZONA.EDU/B-ARCH](https://capla.arizona.edu/b-arch)

Bachelor of Landscape Architecture

The four-year BLA is a professional degree program that prepares you to become a successful, licensed landscape architect. The dynamic, studio-based curriculum is taught by award-winning faculty and designed to fully engage your artistic, analytical and inventive self.

PROGRAM LENGTH: 4 years

UNITS: 121

*Specific application deadlines apply to this degree.
Please refer to the website.*

► [CAPLA.ARIZONA.EDU/BLA](https://capla.arizona.edu/bla)

Bachelor of Science in Sustainable Built Environments

The four-year, STEM-designated BS SBE is offered in person, online and at UArizona's UPC Lima microcampus. As an SBE student, you'll gain a comprehensive understanding of sustainability principles that will prepare you with the skills you need to make our buildings, landscapes and communities more resilient.

PROGRAM LENGTH: 4 years

UNITS: 120

EMPHASIS AREAS: Heritage Conservation, Sustainable Buildings, Sustainable Communities, Sustainable Landscapes, Sustainable Real Estate Development

Specific application deadlines apply to this degree. Please refer to the website.

► [CAPLA.ARIZONA.EDU/SBE](https://capla.arizona.edu/sbe)

Partner Undergraduate Degrees Offered by Other Colleges:

- Bachelor of Arts in Design Arts and Practices (Object Design and Spatial Design Emphasis Areas)
**underneath College of Fine Arts*
- Bachelor of Science in Architectural Engineering
**underneath College of Engineering*
- Bachelor of Arts in Applied Humanities (Spatial Organization & Design Thinking Emphasis)
**underneath College of Humanities.*



UNDERGRADUATE MINORS

- Architectural History and Theory
- Landscape Architecture
- Real Estate Development
- Sustainable Built Environments

“CAPLA is a place where I can experiment and ask big questions in a stimulating environment. It is a place with so many tools and resources to truly learn through making. And most importantly, it is a place where I can collaborate and conspire with colleagues who I admire.

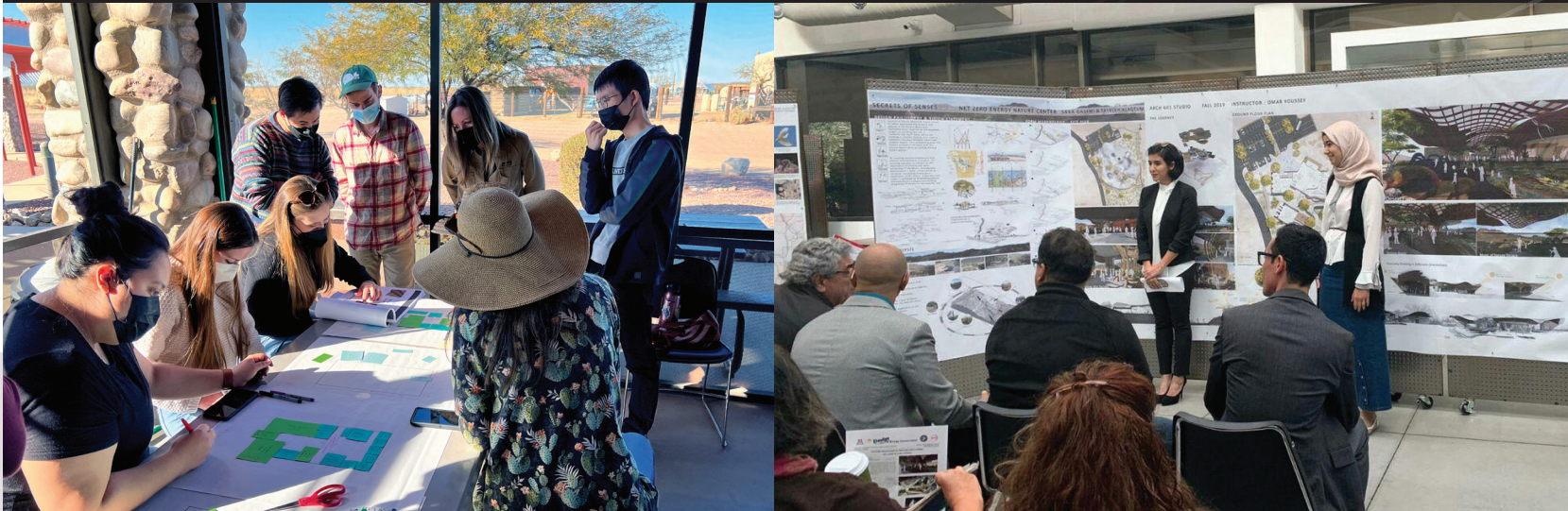
– Athena Myers '21 M Arch

GRADUATE DEGREES

Change your future. Build a changing world.

Now more than ever, the world needs design, development and planning leaders with the expertise and innovation to build a more sustainable world. With a master's degree in architecture, landscape architecture, real estate development or urban planning from CAPLA, you'll be ready to lead.

Our programs are taught by world-class faculty in state-of-the-art facilities. Find your place here.



Master of Architecture

The NAAB-accredited, STEM-designated M Arch, available in two- or three-year tracks, is a professional degree that places an emphasis on critical practice and sustainable design honed by the poetics of place. As an M Arch student, you'll acquire a portable design sensibility, empowering you to develop critical modes of practice, regardless of where or how you practice.

PROGRAM LENGTH: 2 or 3 years
depending on undergraduate degree

UNITS: 62 (M Arch II) or 94 (M Arch III)

TRACKS: M Arch II, for students with an undergraduate studio-based architecture degree; M Arch III, for students with little or no design background

Specific application deadlines apply to this degree. Please refer to the website.

► [CAPLA.ARIZONA.EDU/M-ARCH](https://capla.arizona.edu/m-arch)

Master of Science in Architecture

The MS Arch is a STEM-designated graduate degree devoted to fundamental and applied research in the built environment with a flexible curriculum of approximately three semesters. It is the only graduate architecture program of its kind that allows you to move across and between concentration areas to form your own specialization in architectural research and practice.

PROGRAM LENGTH: 1.5 years

UNITS: 36

RESEARCH AREAS: Include but are not limited to critical spatial practice, design and energy conservation, emerging building technologies, health and the built environment, heritage conservation, sustainable market transformation and urban design

Specific application deadlines apply to this degree. Please refer to the website.

► [CAPLA.ARIZONA.EDU/MS-ARCH](https://capla.arizona.edu/ms-arch)



Confronting Borderlands, by Kenneth J. Kokroko '17 MLA



Master of Landscape Architecture

The LAAB-accredited, STEM-designed MLA is a three-year program that prepares you for the practice of landscape architecture by engaging you in applied scholarship with an emphasis on sustainable strategies. Award-winning, engaged faculty employ real-world learning experiences that enable you to meet the most critical design challenges of the built environment.

PROGRAM LENGTH: 3 years
UNITS: 76

Specific application deadlines apply to this degree. Please refer to the website.

► **CAPLA.ARIZONA.EDU/MLA**

Master of Real Estate Development

The MRED—offered in person in 18 months and online in as little as 12 months—is designed for professionals who seek to become industry leaders while creating the future of responsible development. The dynamic program focuses on real estate development analysis, finance and practice, preparing you to become a sustainability-focused property investor or developer.

PROGRAM LENGTH: 1.5 years, in person; 1+ year, online
UNITS: 30

Specific application deadlines apply to this degree. Please refer to the website.

► **CAPLA.ARIZONA.EDU/MRED**

Master of Science in Urban Planning

The highly ranked two-year, PAB-accredited MSUP prepares you for a meaningful career where you'll shape a more resilient future for cities and communities, locally and across the globe. We're pushing urban planning education, research and practice in new and exciting directions, and students from diverse backgrounds are at the heart of our award-winning and engaging work.

PROGRAM LENGTH: 2 years
UNITS: 47

CONCENTRATIONS AREAS:

Environmental Planning, Heritage Conservation, Real Estate and Urban Development, Urban Transportation Planning

Specific application deadlines apply to this degree. Please refer to the website.

► **CAPLA.ARIZONA.EDU/MSUP**

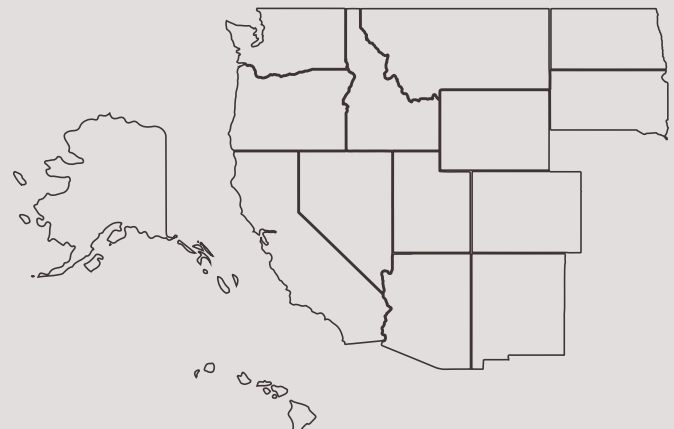
ASK ABOUT OUR MANY DUAL-DEGREE GRADUATE PROGRAMS.

From the West?

Graduate students can get Arizona resident tuition for the M Arch, MS Arch, MLA and MSUP.

If you're from one of 16 Western states and territories, you're now eligible for Arizona resident tuition pricing for most of CAPLA's graduate programs through the Western Regional Graduate Program (WRGP).

► **LEARN MORE AT CAPLA.ARIZONA.EDU/WRGP.**



GRADUATE CERTIFICATES

Build a more sustainable career—and world.

In a rapidly changing environment, CAPLA graduate certificates prepare you for what's next, whether that's advancing your career, pursuing a passion or planning for an additional degree.

Offered on campus and online, our graduate certificates set you apart as a skilled practitioner ready to develop, plan, build and preserve a changing world.

Graduate Certificate in Heritage Conservation

Learn to preserve built and natural environments as part of a comprehensive ethic of environmental, cultural and economic sustainability in this five-course, 15-unit fully online program.

► [CAPLA.ARIZONA.EDU/HC](https://capla.arizona.edu/hc)

Graduate Certificates in Real Estate Development

Become an industry leader through CAPLA's three real estate development graduate certificates: Real Estate Development Analysis (three courses, 9 units), Real Estate Development Finance (four courses, 12 units) and Real Estate Development Practice (four courses, 12 units).

► [CAPLA.ARIZONA.EDU/RED](https://capla.arizona.edu/red)



THE CAPLA STUDENT EXPERIENCE



The student experience at CAPLA is as rewarding as it is challenging.

In our tight-knit community of doers, you'll find the support you need to thrive.

As a small college in a large Research 1 university, we offer a unique, student-focused environment for learning how to plan, develop, design and create a more sustainable future.

Are you ready to build a changing world?

► LEARN MORE AND APPLY NOW AT [CAPLA.ARIZONA.EDU](https://capla.arizona.edu).

