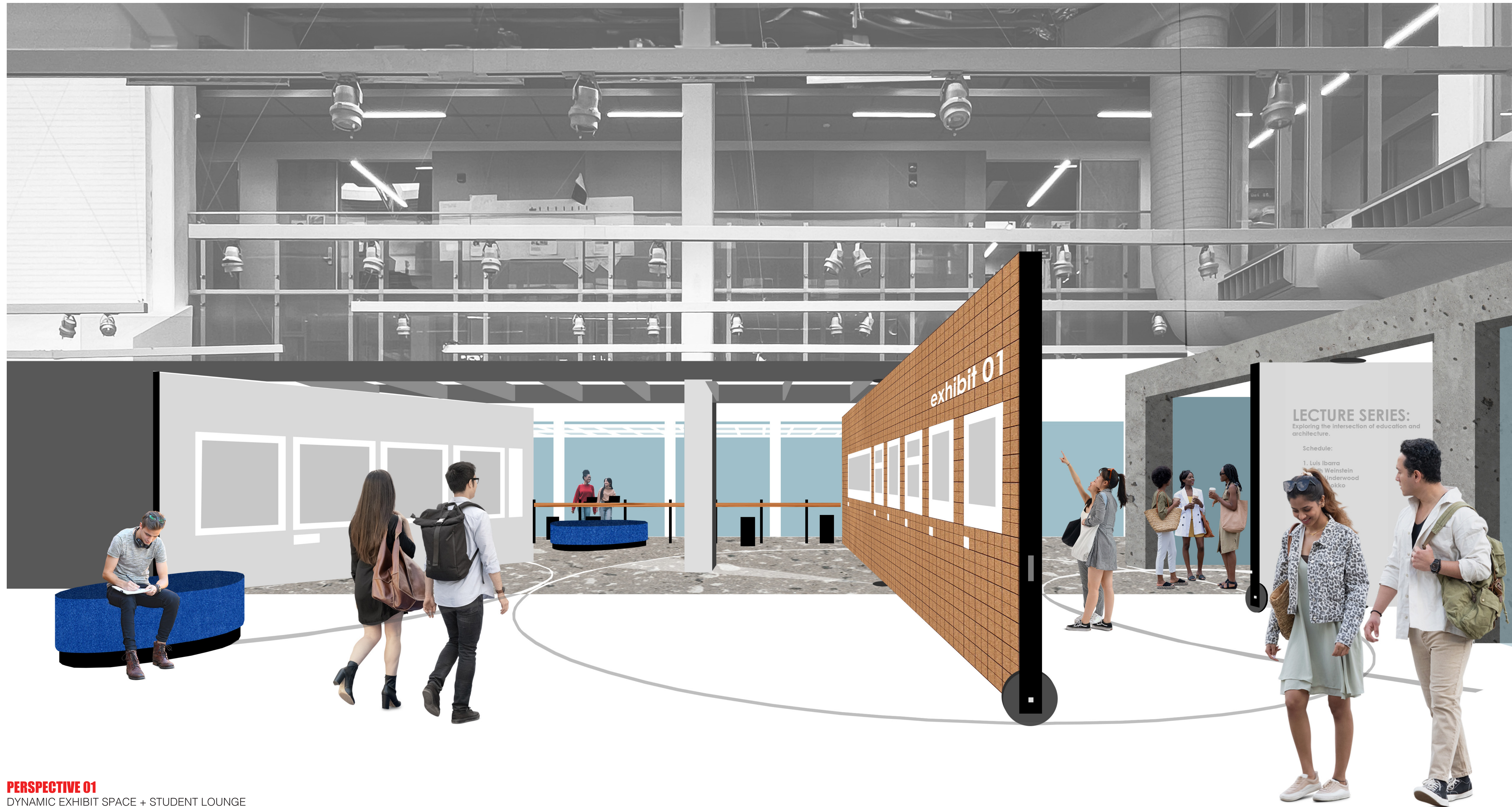


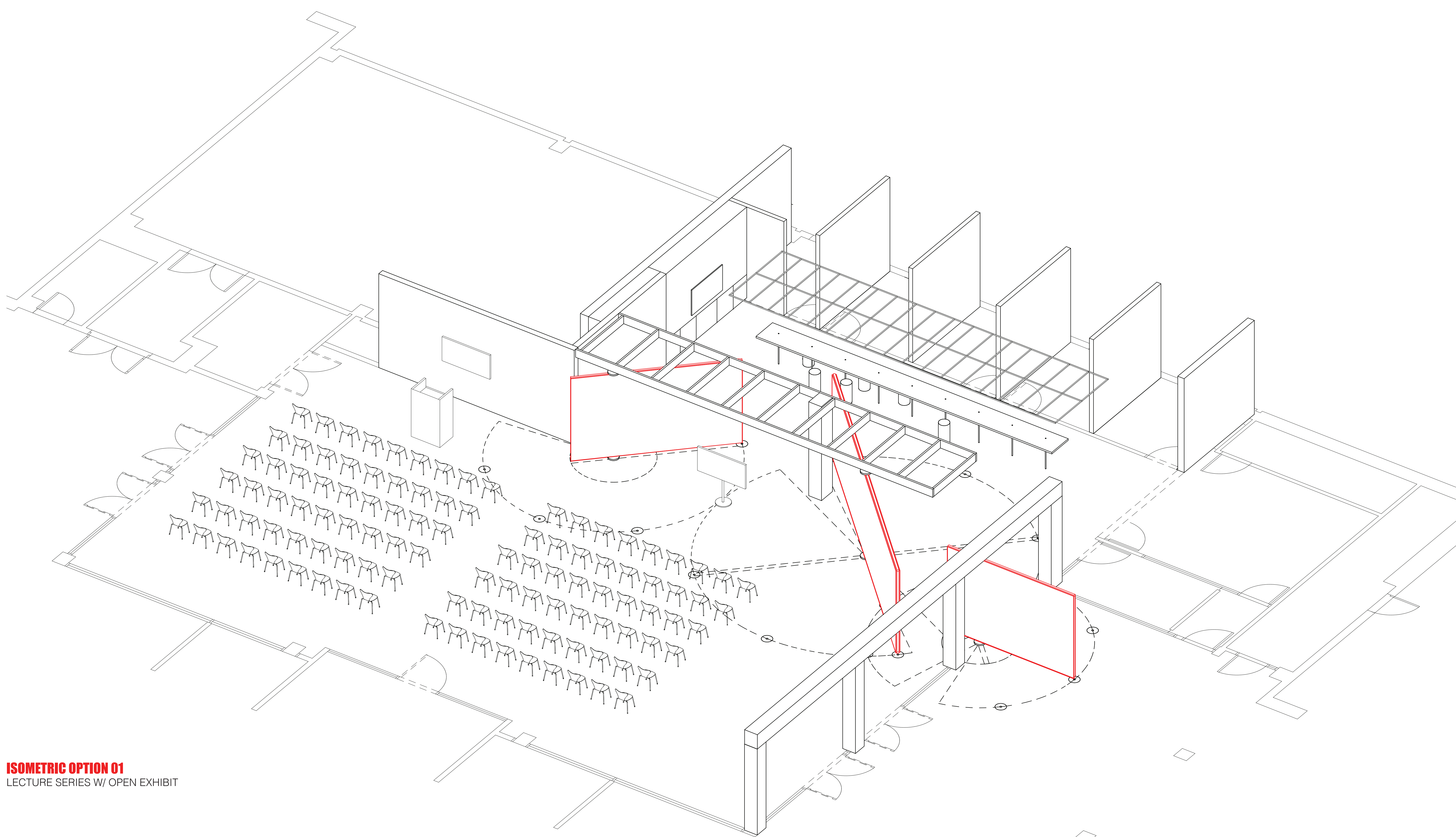
CAPLA IDEAS COMPETITION | FACULTY: TREVOR WATSON + OSCAR LOPEZ | STUDENT: DAVID HERMOSILLO

CAPLA's new 'front door' uses a series of dynamic operable panels that rotate about a fixed pin. Depending on the occasion, the panels can be turned and locked into place, creating adaptable spatial relationships that respond to the changing needs of CAPLA. This dynamic relationship allows the Alumni Center to expand out and physically reach into the Sundt space, encouraging students to make use of the collaborative work table and see what's on display.

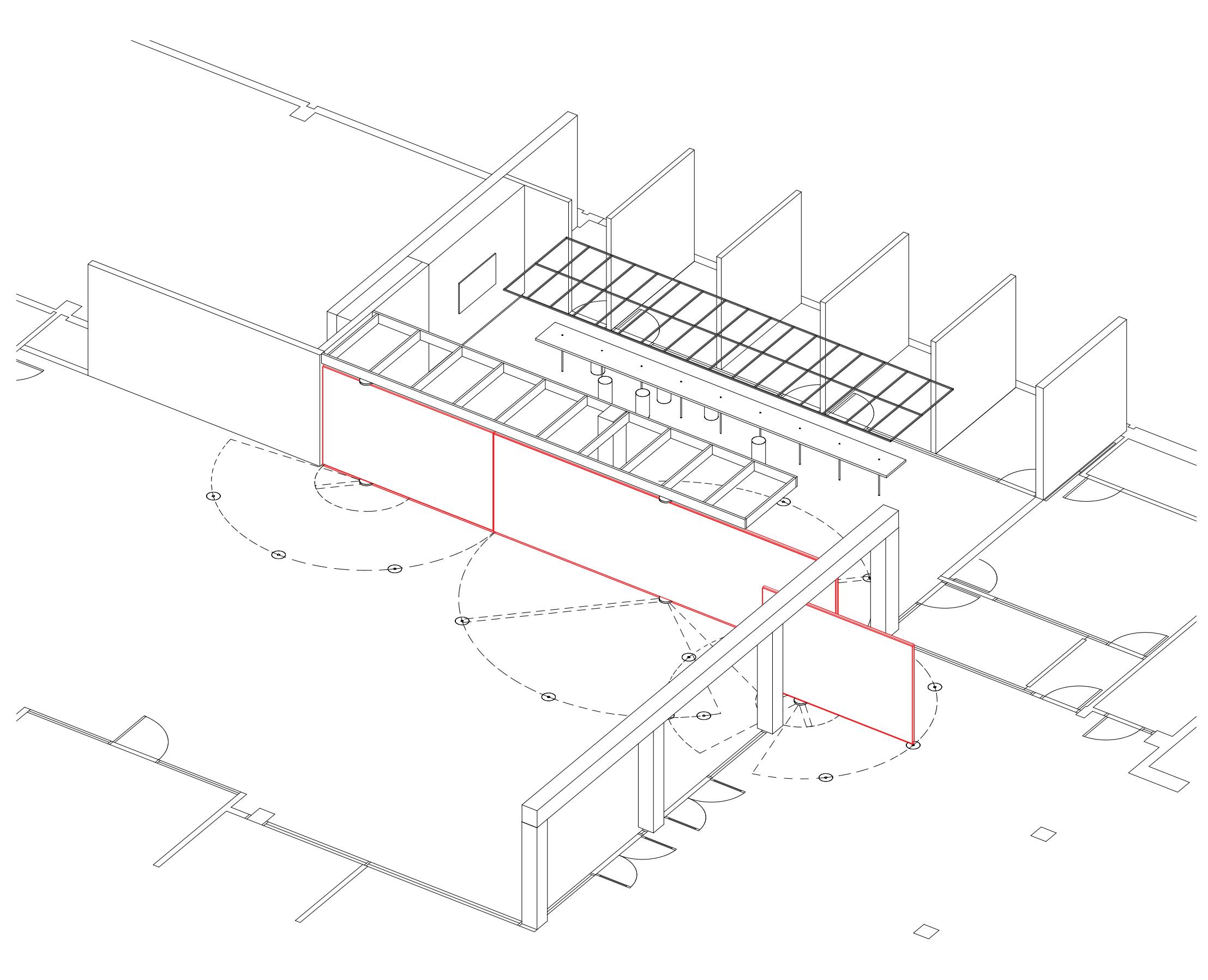
To help support this table's use a large presentation screen and soft seating is provided to encourage informal use throughout the semester. The dynamic panels feature multiple materials; cork for pinup and acoustical dampening, whiteboards for writing and gallery spec drywall for exhibition of work. The existing structure above remains, and serves as the top most anchoring points for the panels. The existing glass will be removed and re-purposed as custom mobile whiteboards.



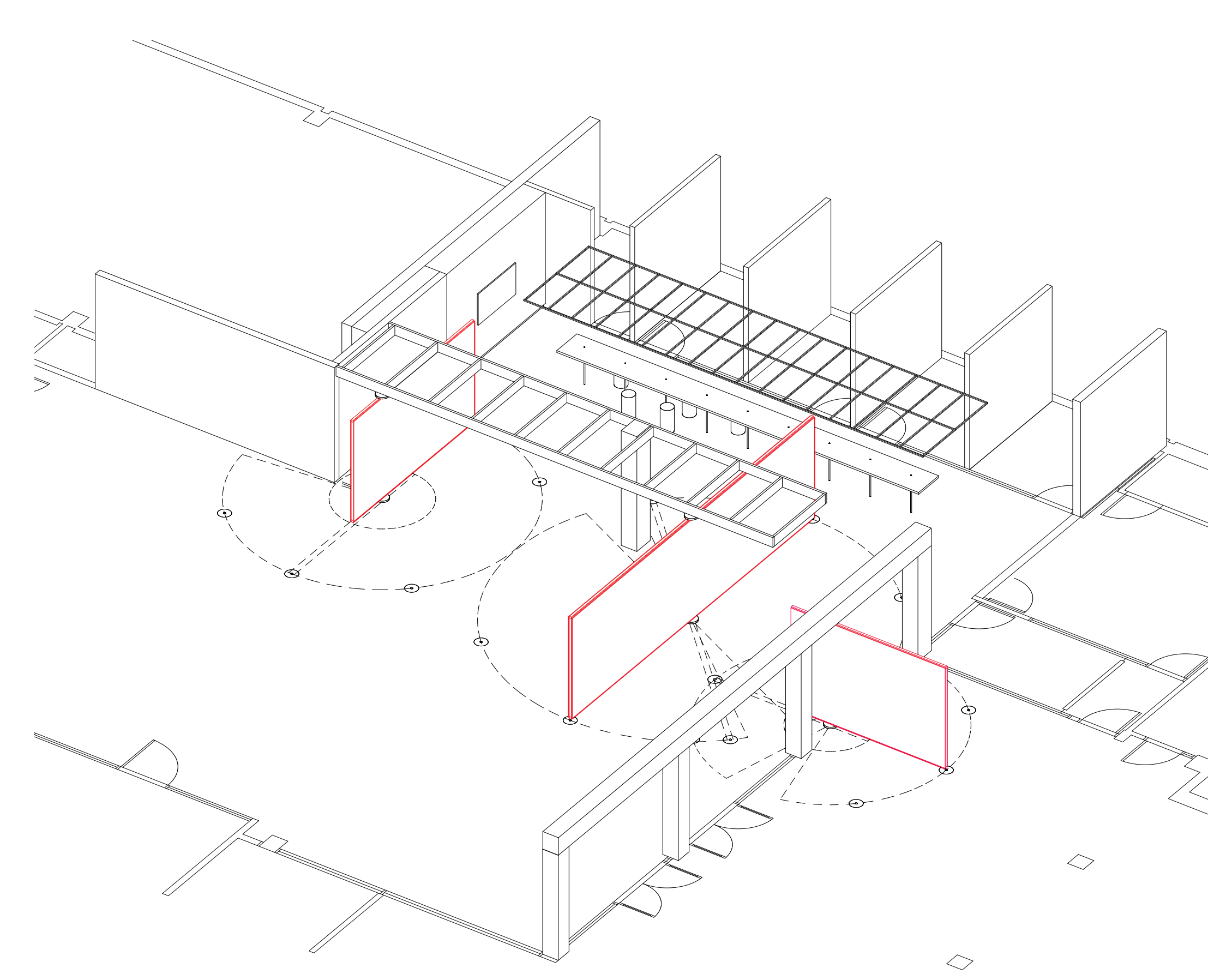
PERSPECTIVE 01
DYNAMIC EXHIBIT SPACE + STUDENT LOUNGE



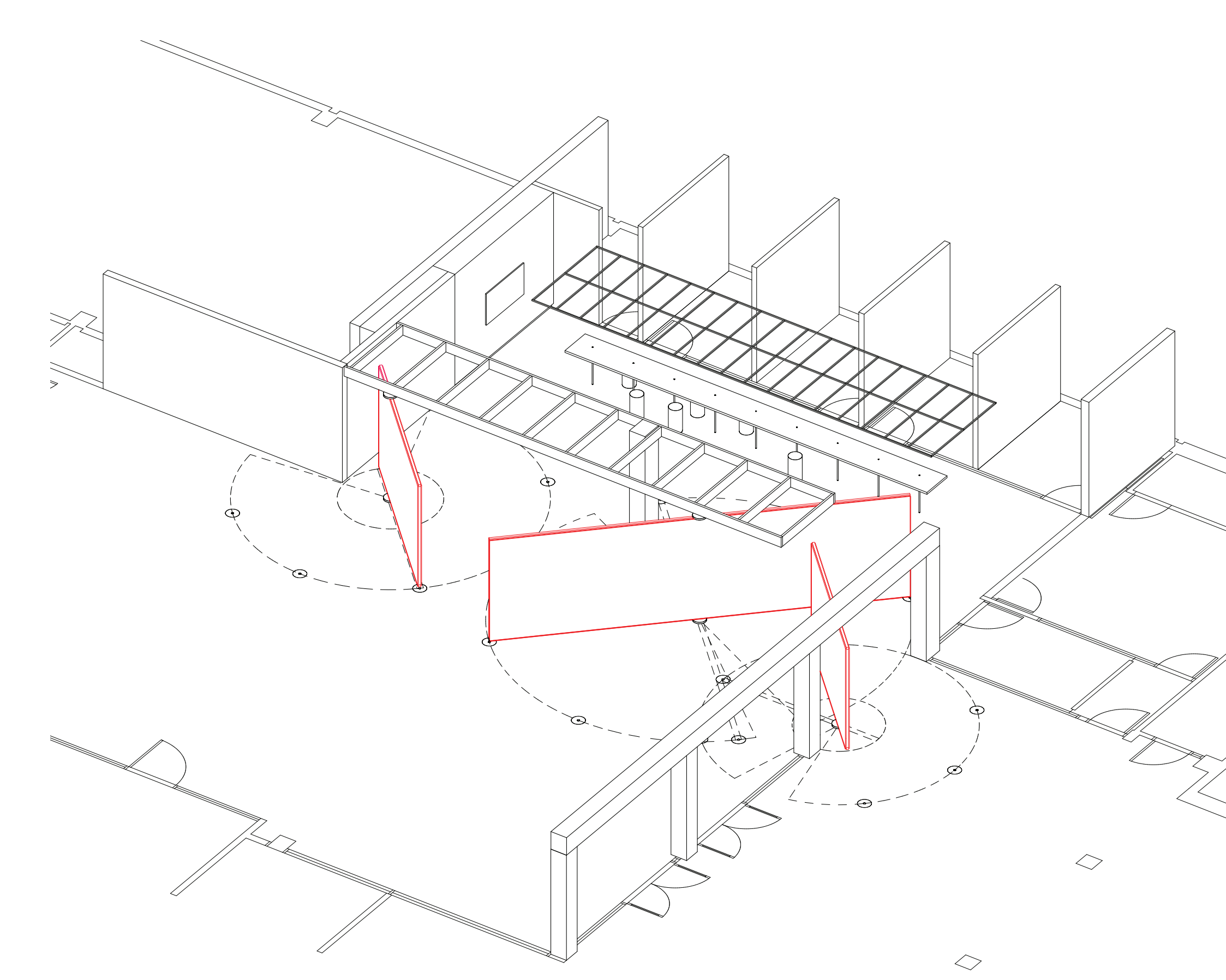
ISOMETRIC OPTION 01
LECTURE SERIES W/ OPEN EXHIBIT



ISOMETRIC OPTION 02
EXHIBIT CLOSED POSITION



ISOMETRIC OPTION 03
FULLY PUBLIC EXHIBIT OPEN POSITION

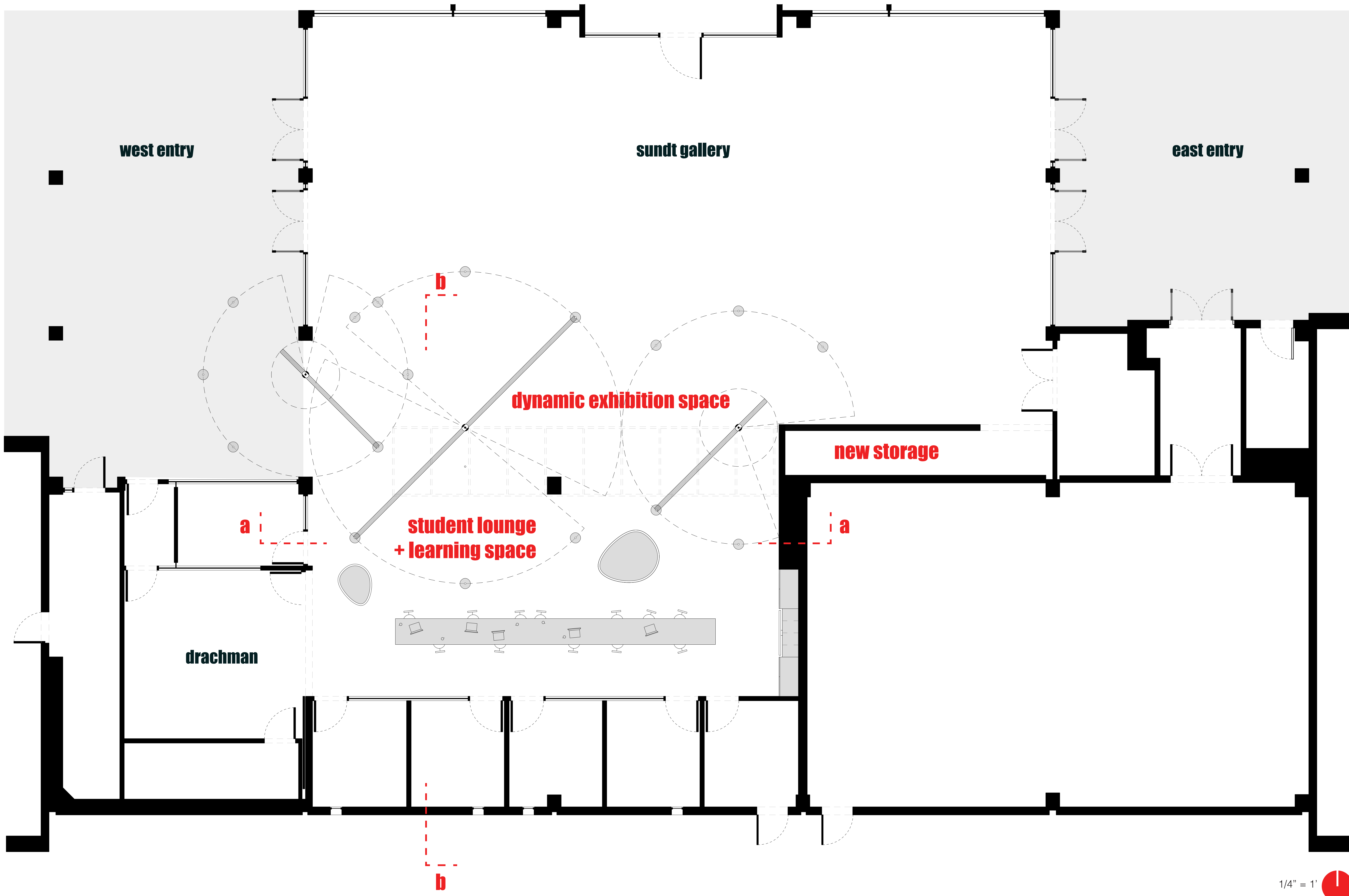


ISOMETRIC OPTION 04
DYNAMIC EXHIBIT OPEN POSITION

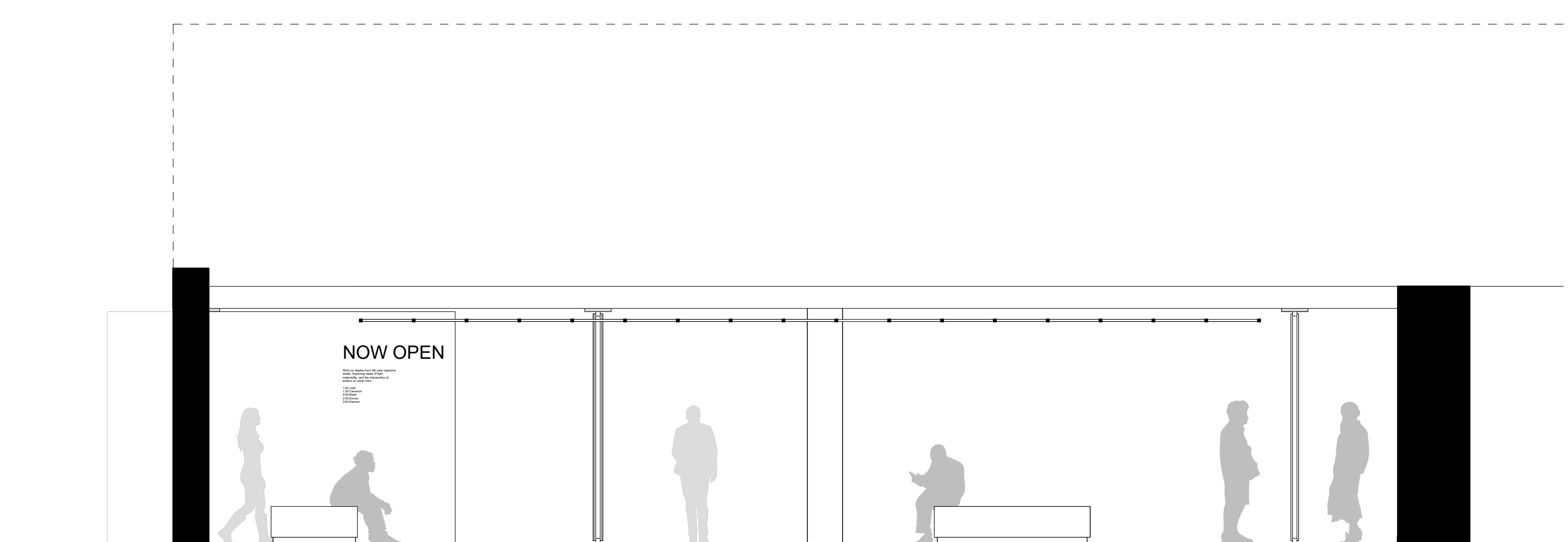


PERSPECTIVE 02
STUDENT LOUNGE + LEARNING SPACE

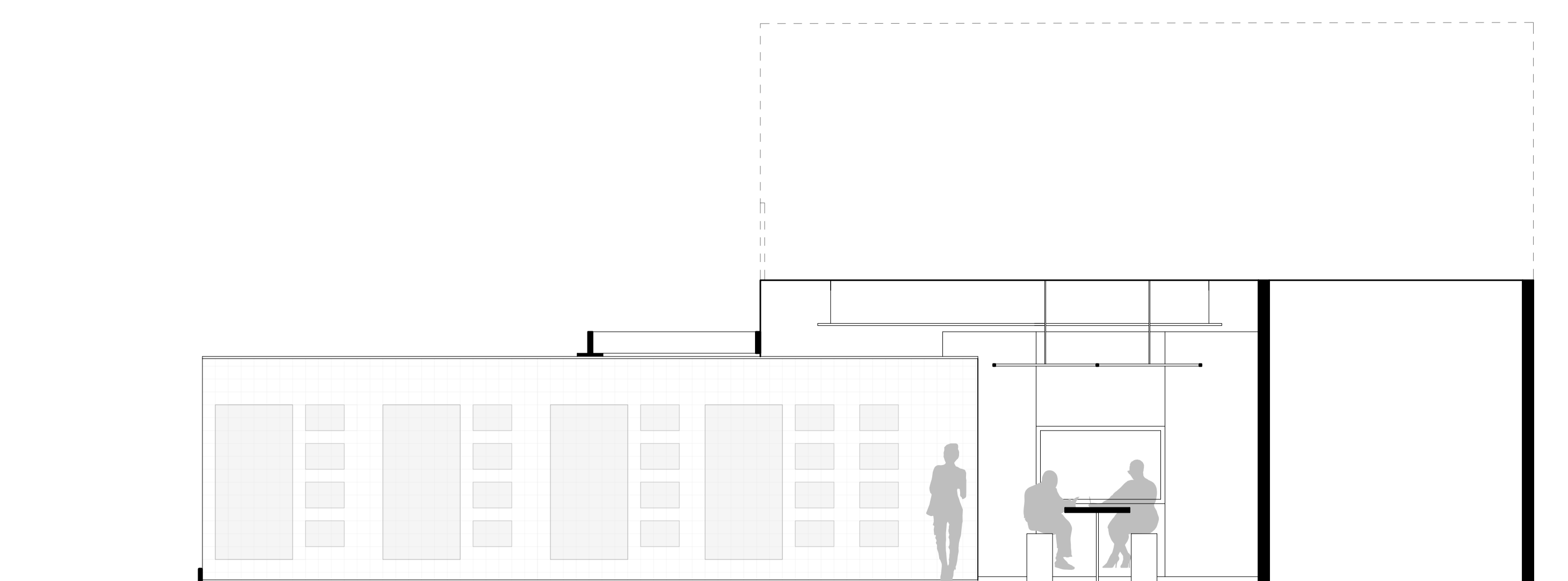
admin + deans suite



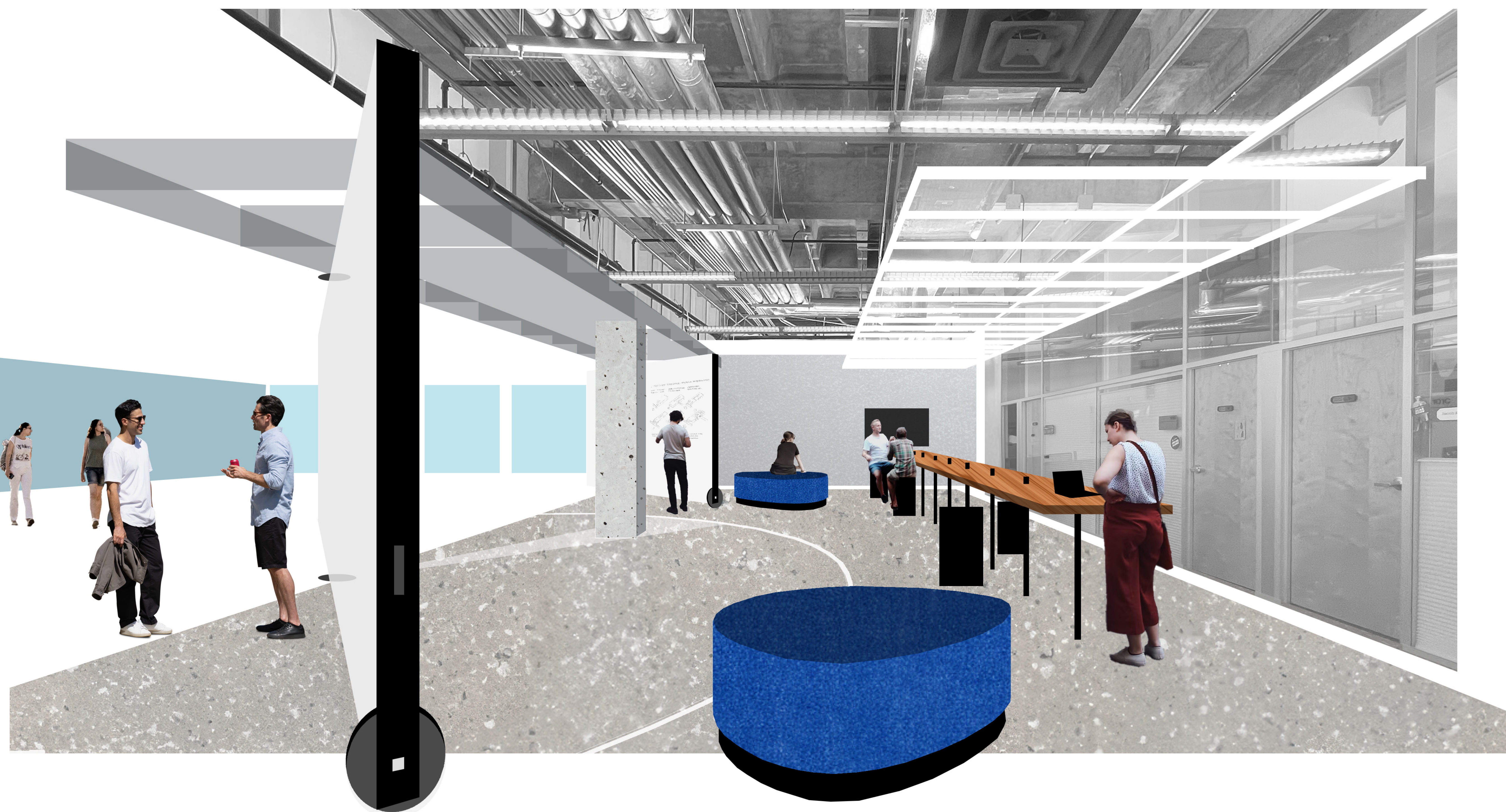
1/4" = 1'



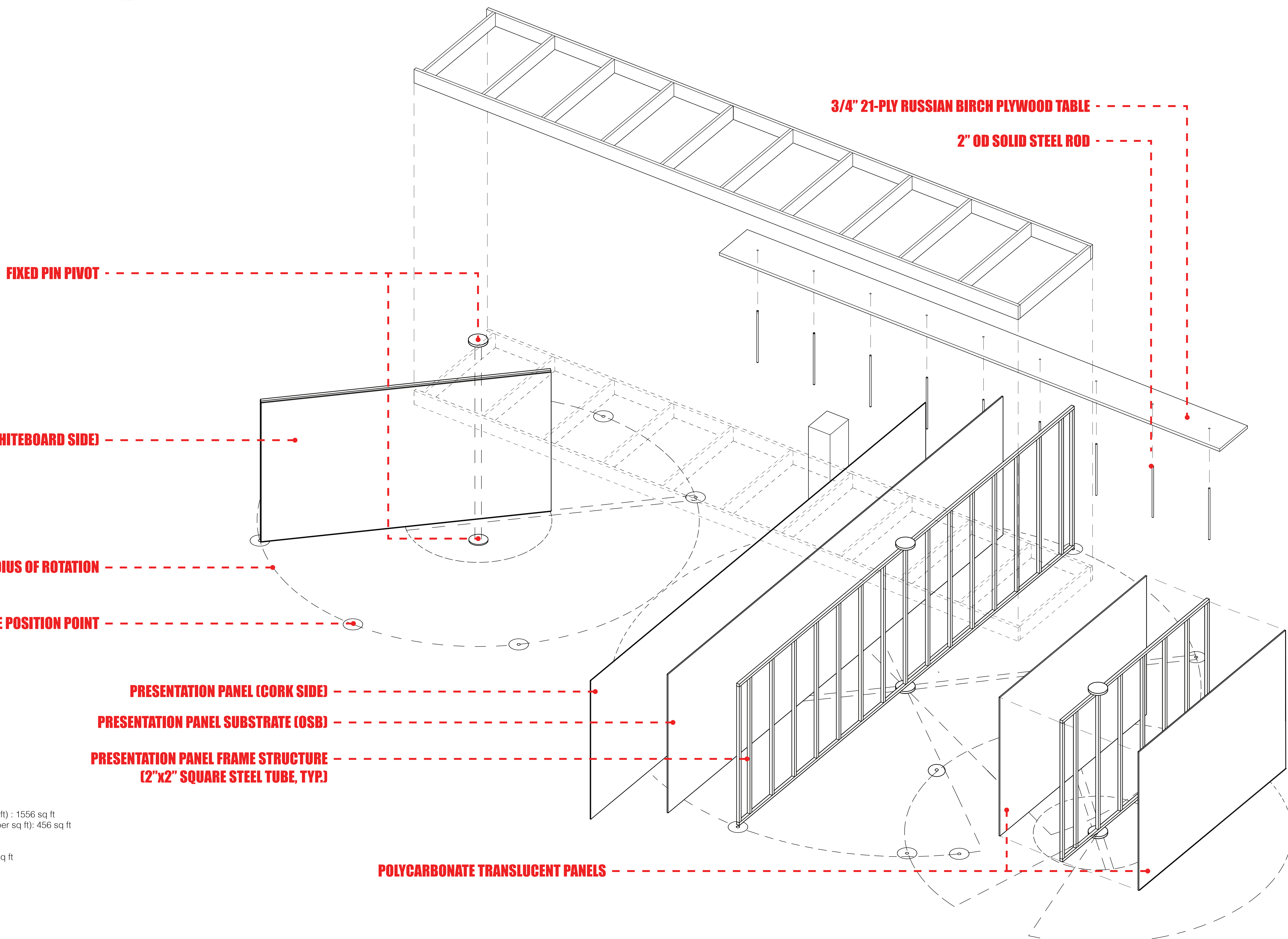
SECTION A
1/4" = 1'



SECTION B
1/4" = 1'



PERSPECTIVE 03
EXHIBIT SPACE + STUDENT LOUNGE



MATERIAL BREAKDOWN:

1. 1/2 inch cork: \$1,297.50 total (\$2.50 per sq ft) : 519 sq ft
2. Drywall: \$622.80 total (\$1.20 per sq ft) : 519 sq ft
3. White board: \$777.00 total (\$5.00 per sq ft) : 259 sq ft
4. 3/4 inch medium grade plywood: \$2,334.00 total (\$1.50 per sq ft) : 1556 sq ft
5. 1/4 inch Polygal polycarbonate panels: \$2,052.00 total (\$4.50 per sq ft) : 456 sq ft
6. 2x2 Square tube steel: \$395.00 total (\$2.50 per lin ft) : 394 lin ft
7. 2\"/>

TOTAL COST \$14,227.3

ISOMETRIC
TECTONIC ASSEMBLY + COST ANALYSIS