

CAPLA NEXUS

Design Brief

The CAPLA Nexus Design focuses on the student alumni center as a connection between the Drachman Institute and the CAPLA students and staff, while accommodating the evolving needs of our college community. Clear, visually appealing signs will highlight different spaces, ensuring that all areas are easily identifiable.

A multi-purpose modular unit runs the length (east-west) of the student alumni

center, providing increased privacy and flexibility for the college advisors. With one side supplying storage space for chairs and a community shelf and pin-up space for staff, the other side provides a flexible and dynamic arrangement of pin-up boards and model exhibition space. These easily moveable pin-up partitions transform the space based on the specific needs of students and staff, whether it be for project reviews, breakout space, or personal

study areas. In addition to this modular unit, a storage cabinet runs along the length of the east wall of the student alumni center and connects to—and extends—the current storage wall in the Sundt gallery's south east corner.

This design initiative will create a cohesive campus experience that enhances interaction between students, faculty, staff, and guests.

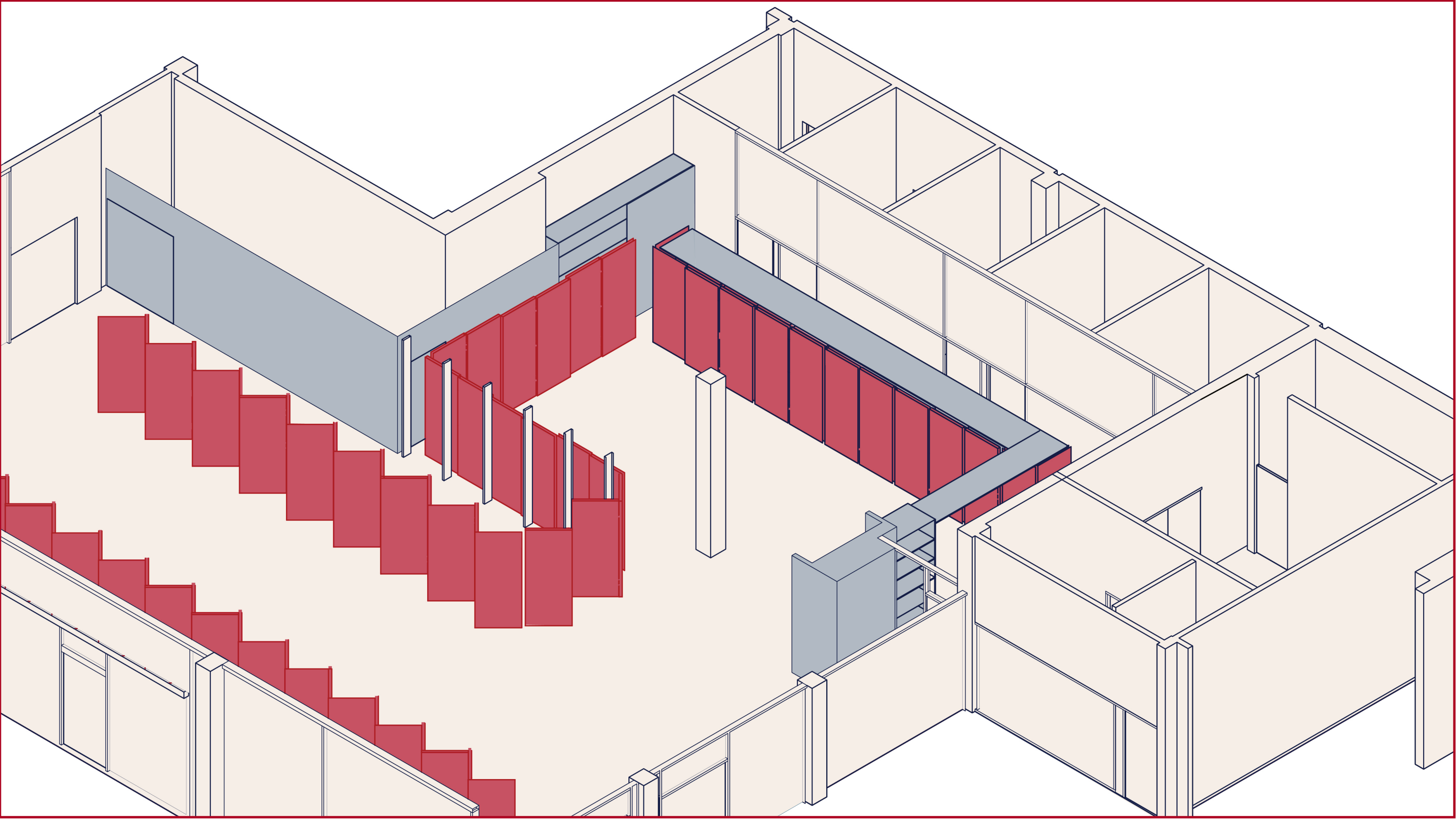
Proposal by Adrien Able, Shruti Penumathy, Kersten Ellsworth
Special thanks to Siri Trumble

Perspective Image

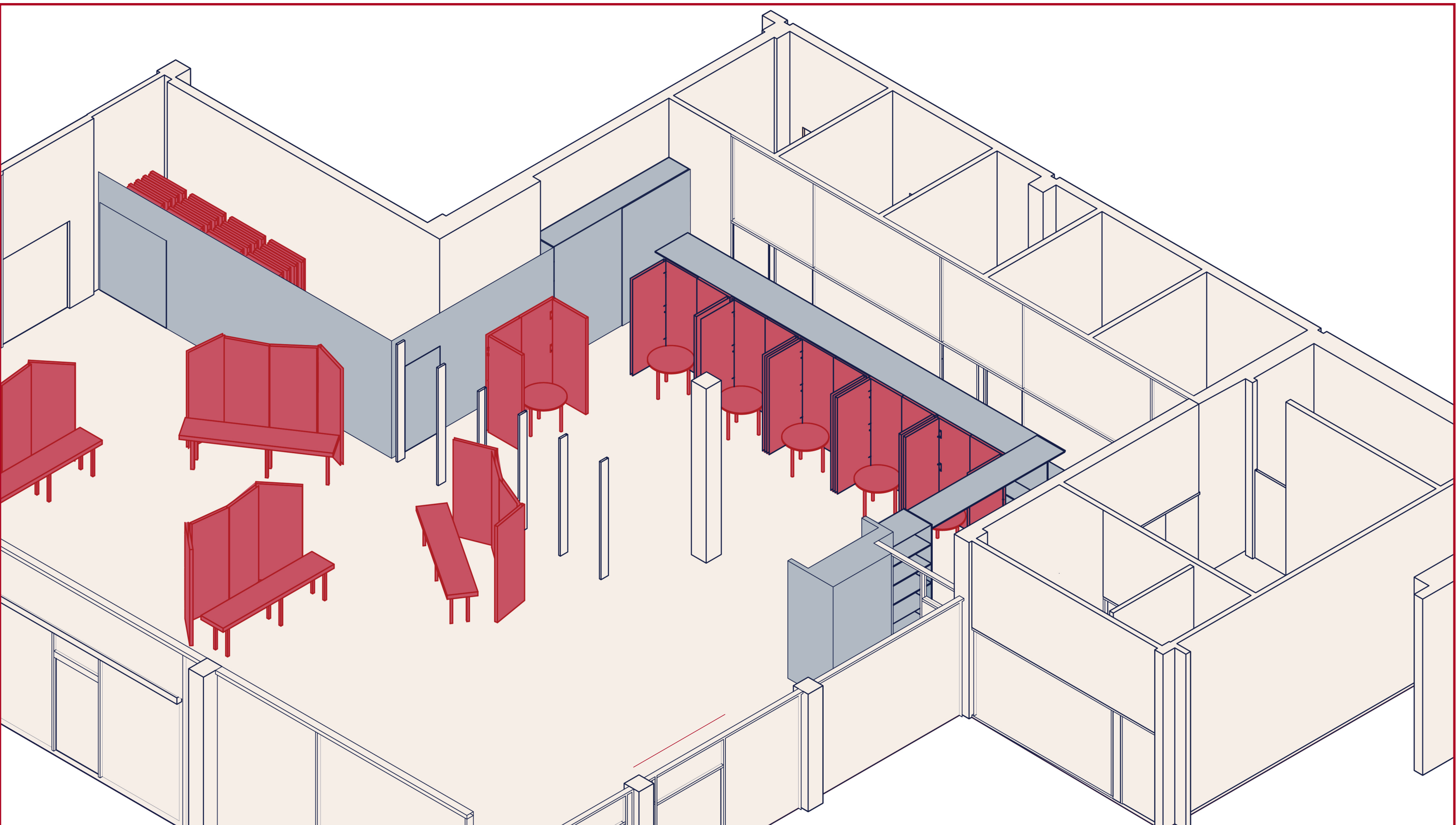


Potential Configurations of Space

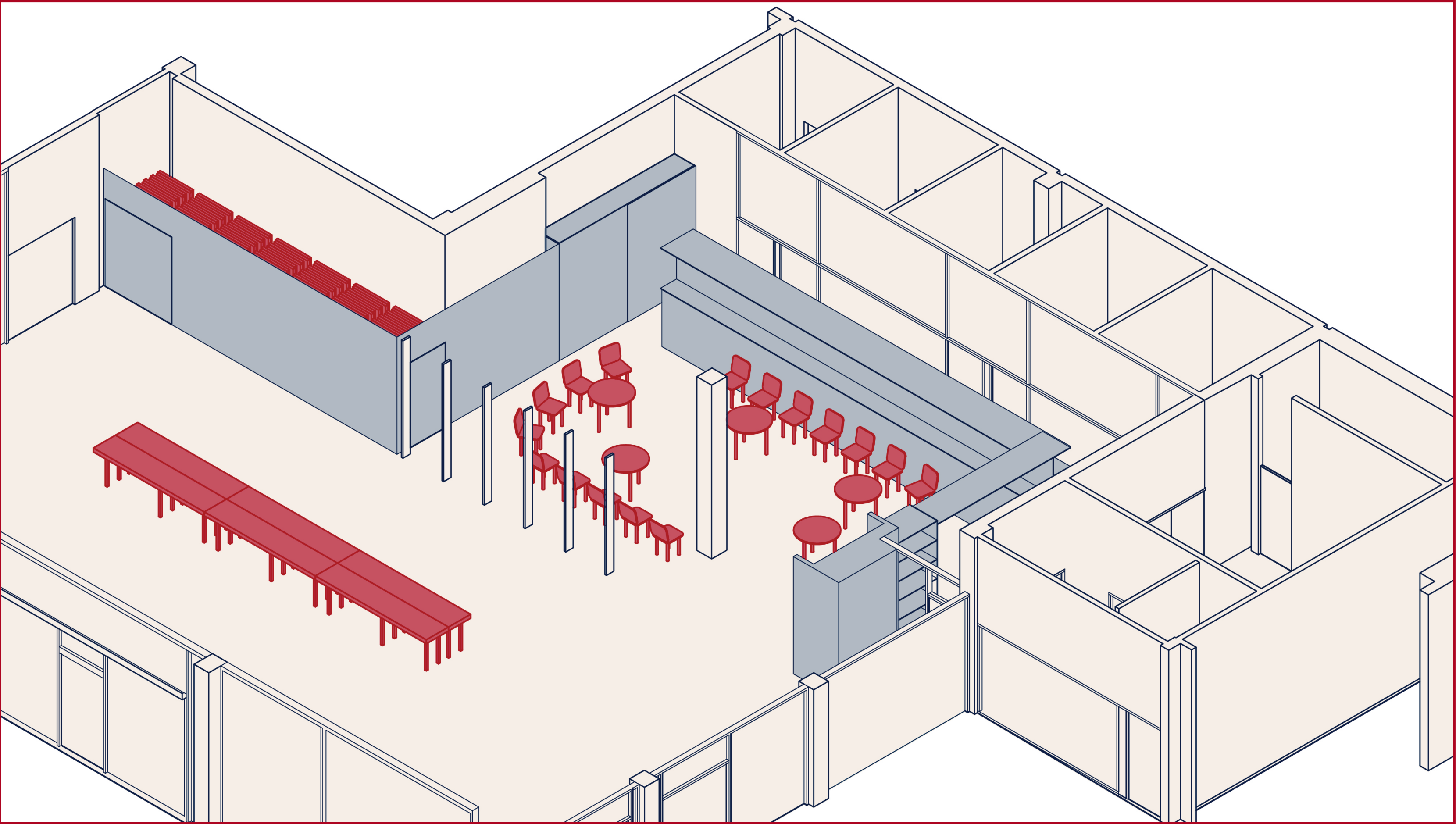
Existing Proposal Potential Configuration



Review

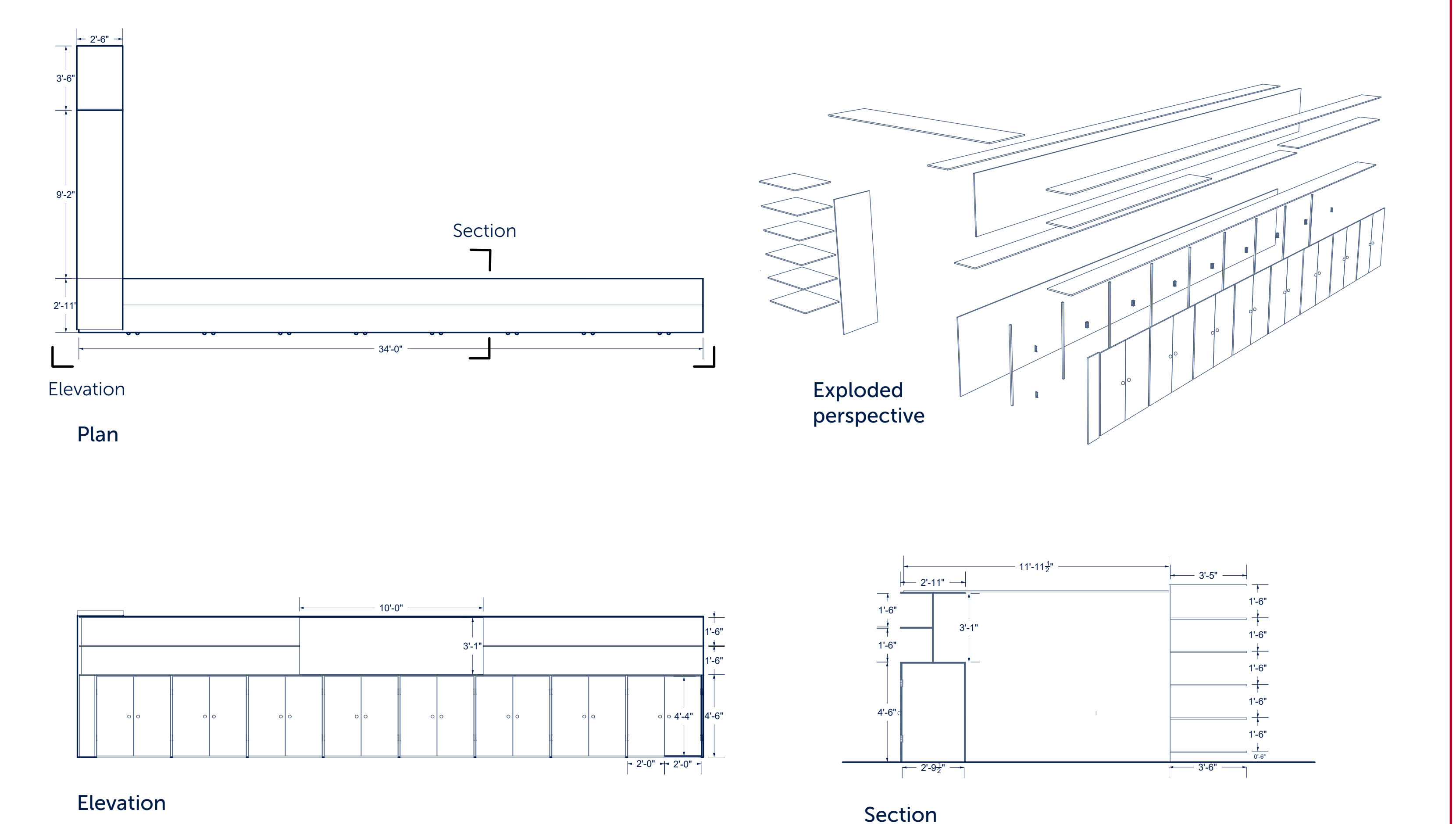


CAPLA Job Fair

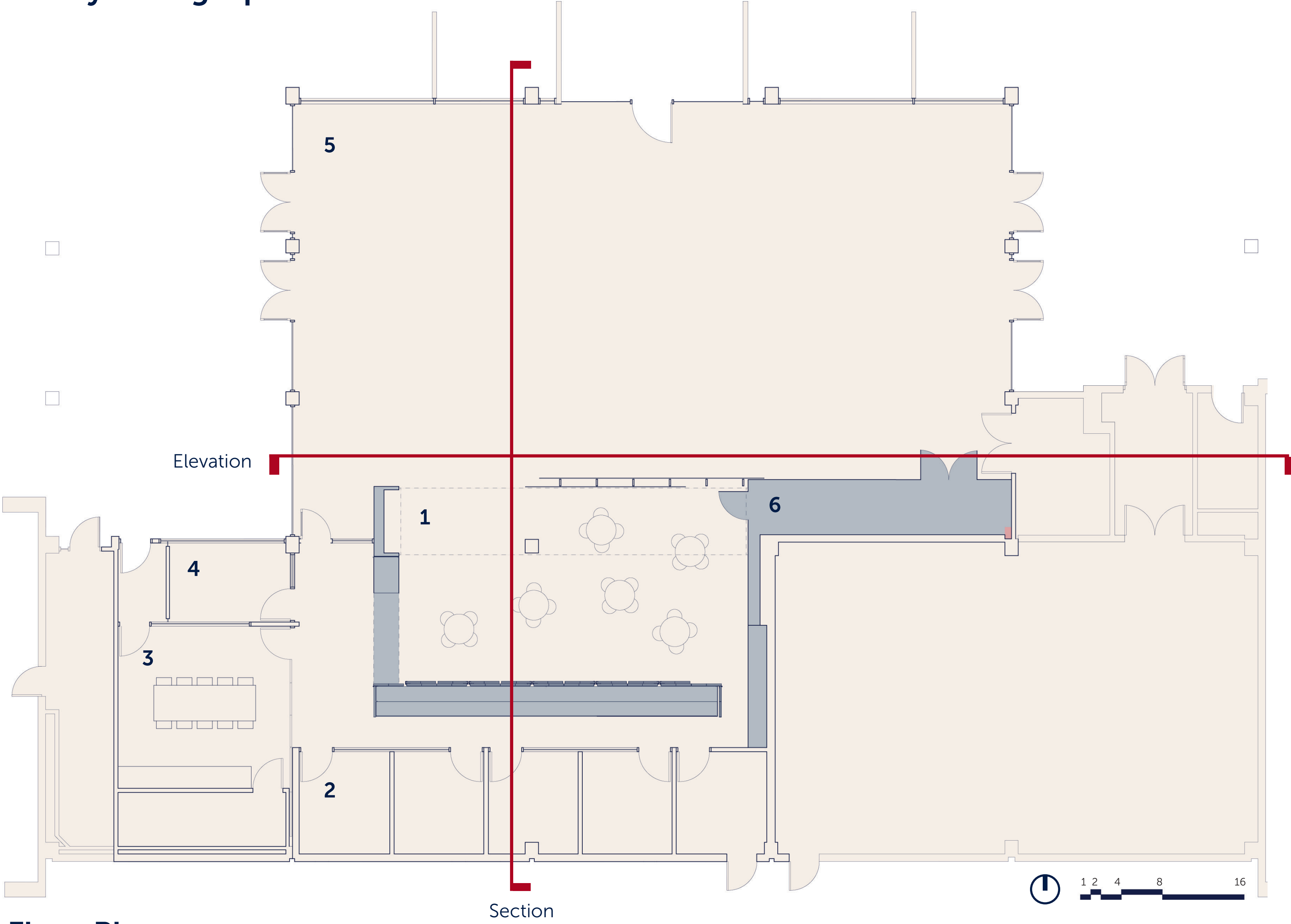


Potluck

Construction Diagrams



Wayfinding Options

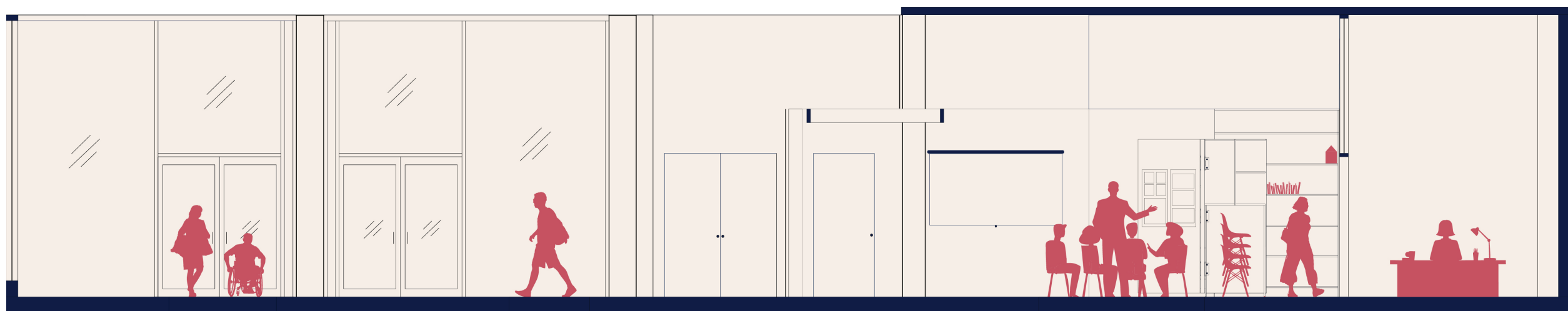


Floor Plan

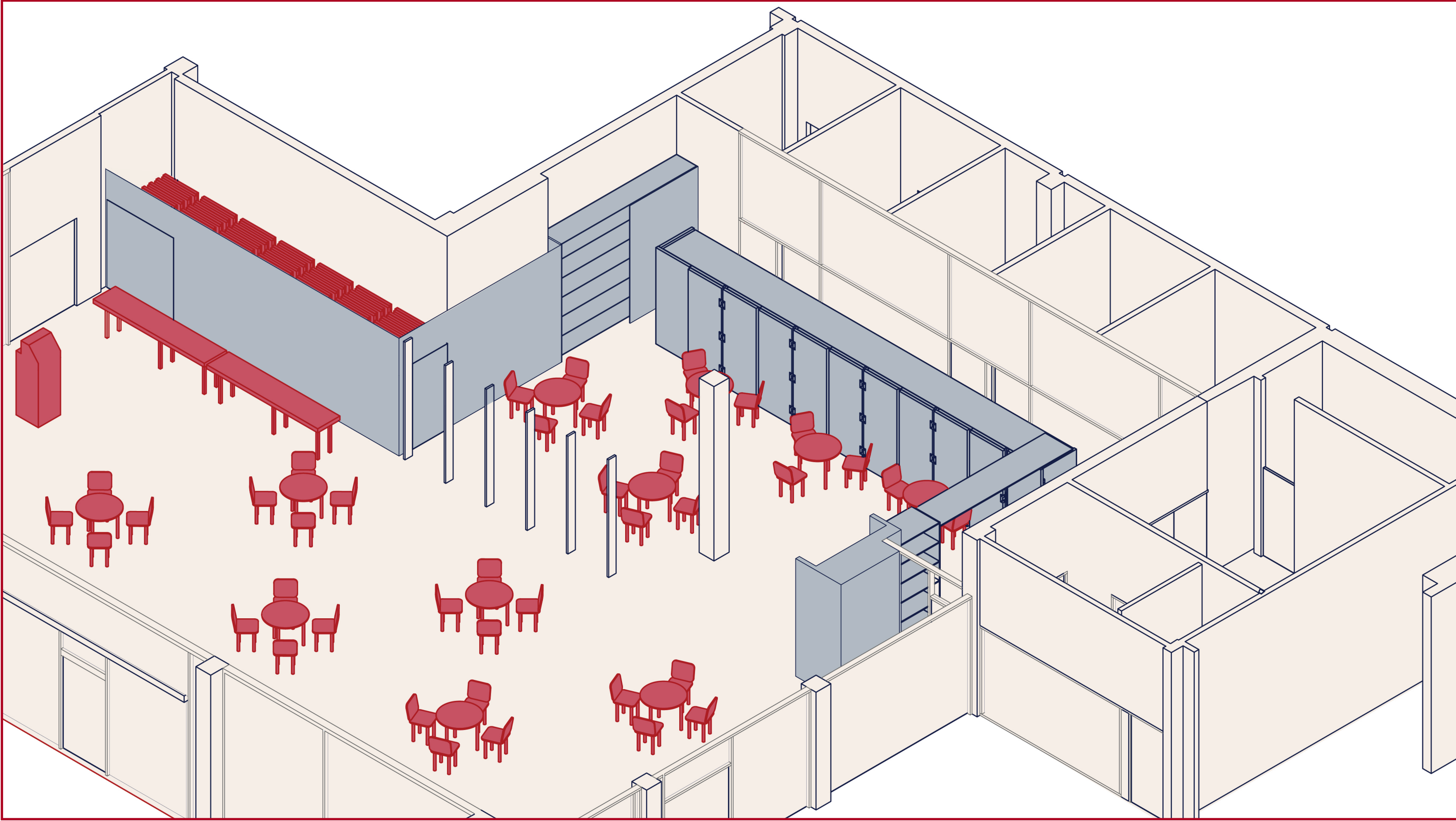
- 1 Student Alumni Center
- 2 Advisor Offices
- 3 Drachman Institute
- 4 Drachman Director's Office
- 5 Sundt Gallery
- 6 Storage Closet



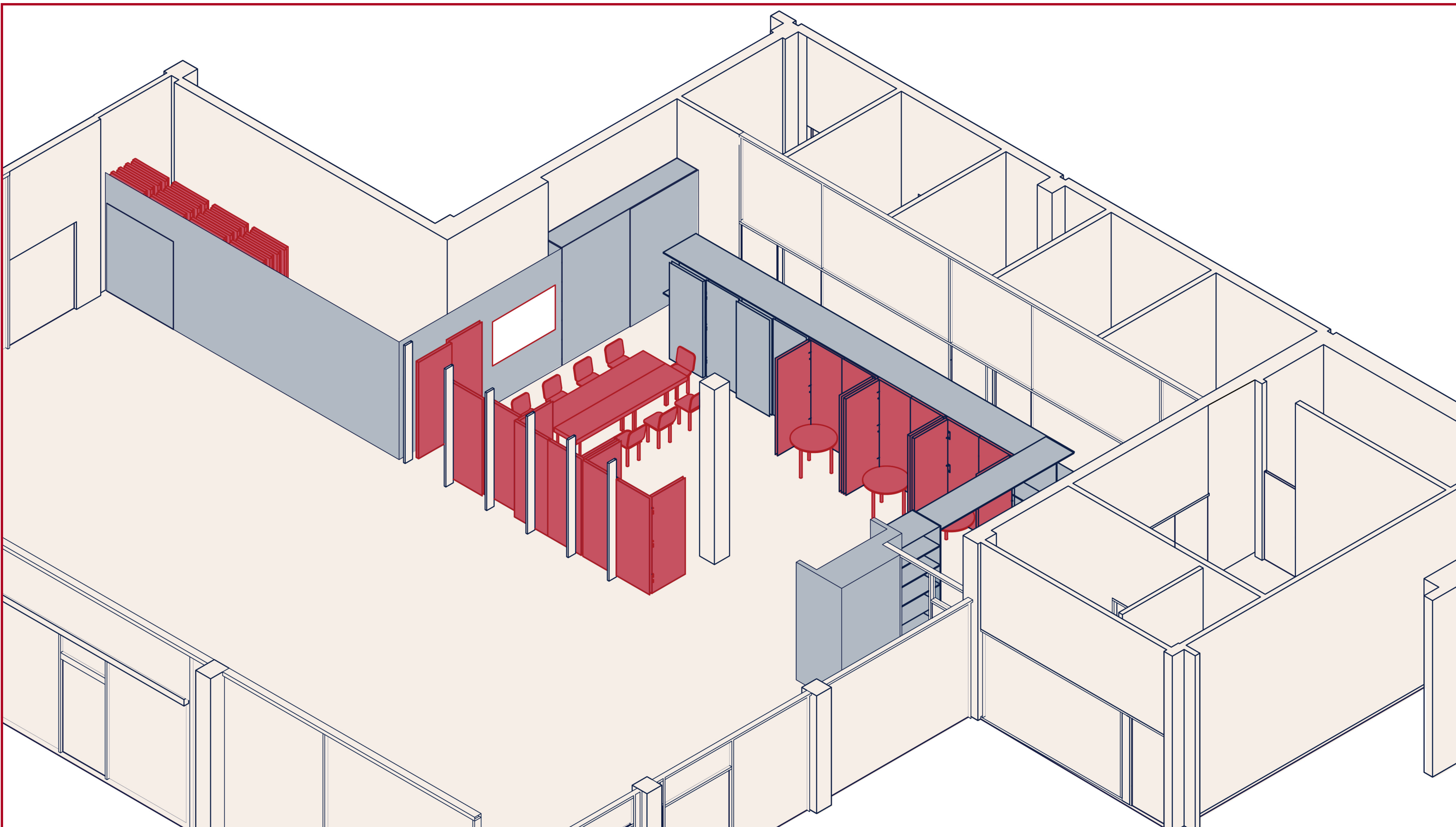
Elevation



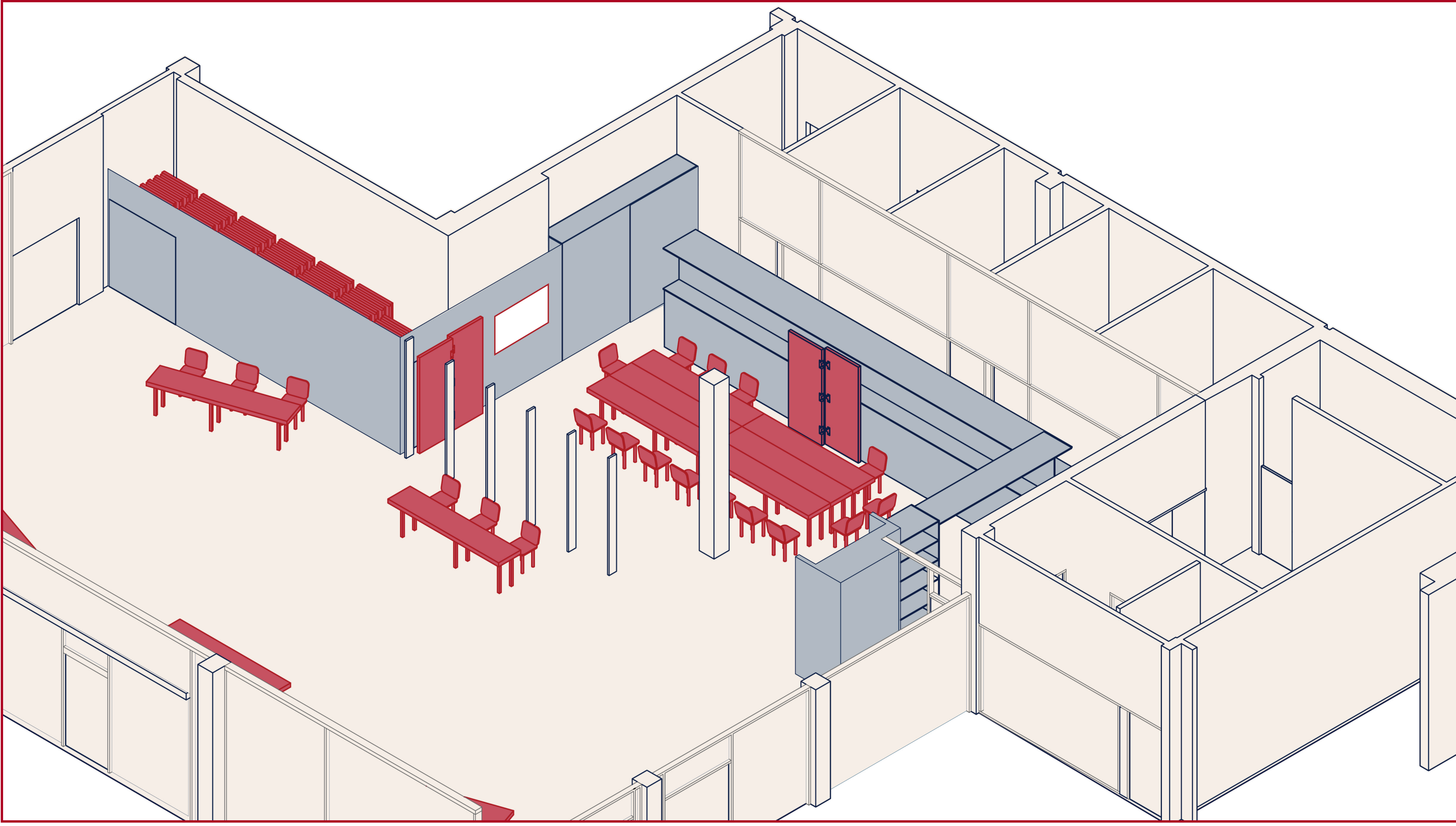
Section



Homecoming



Drachman Conference with Breakout Spaces



CAPLA Club Meetings

Pin-up Board

