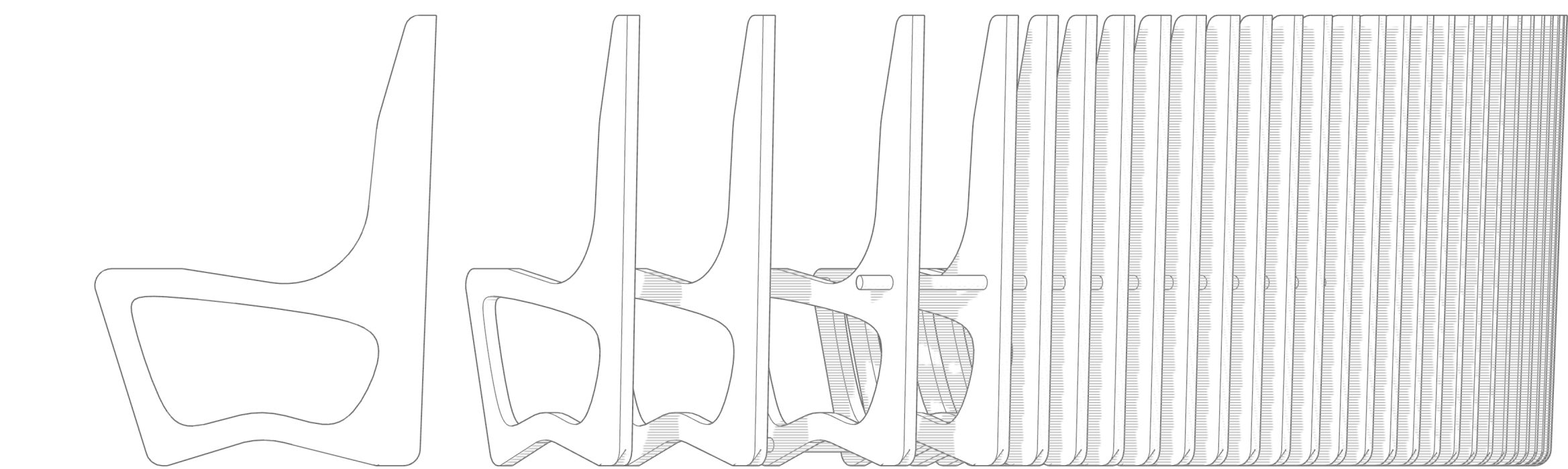
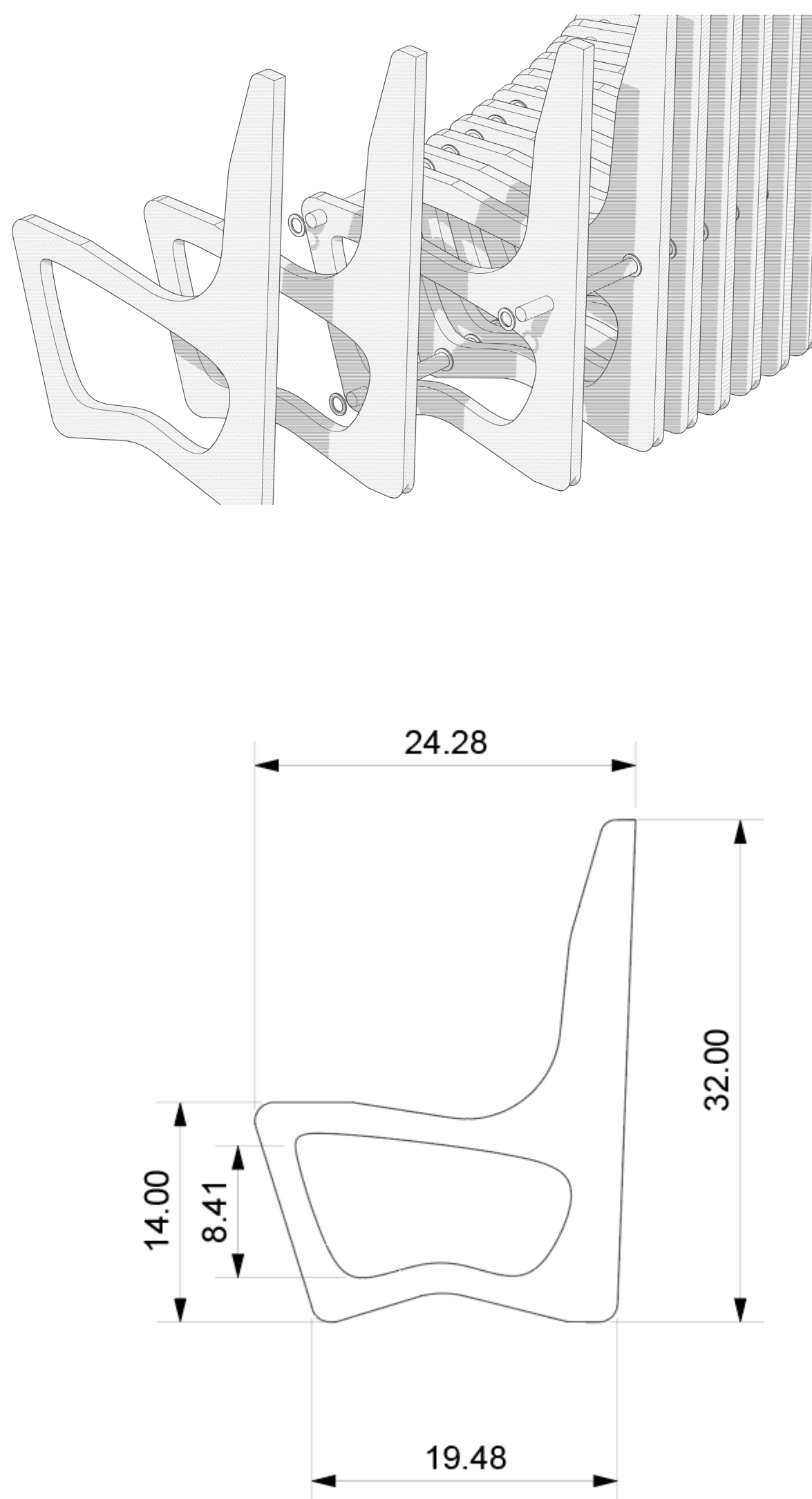
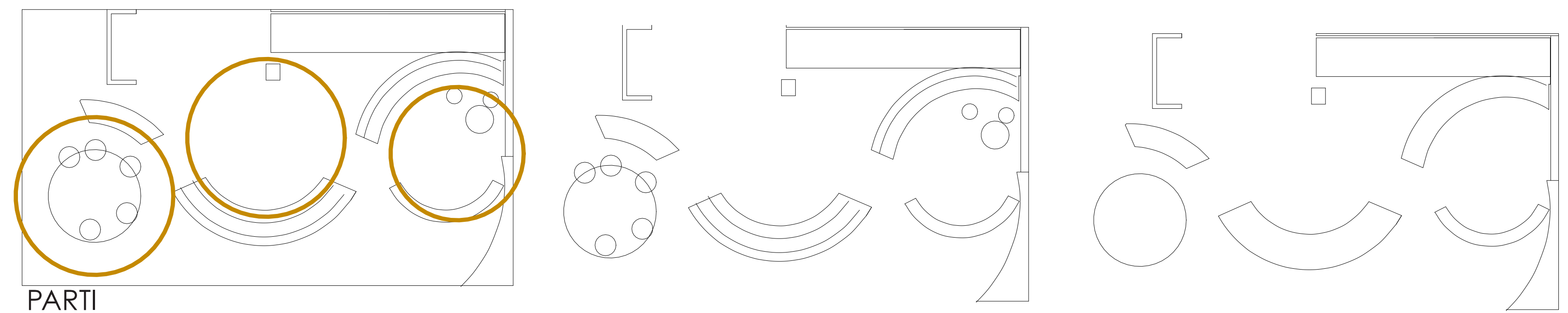


# RE-ENVISIONING THE STUDENT AND ALUMNI CENTER AT CAPLA

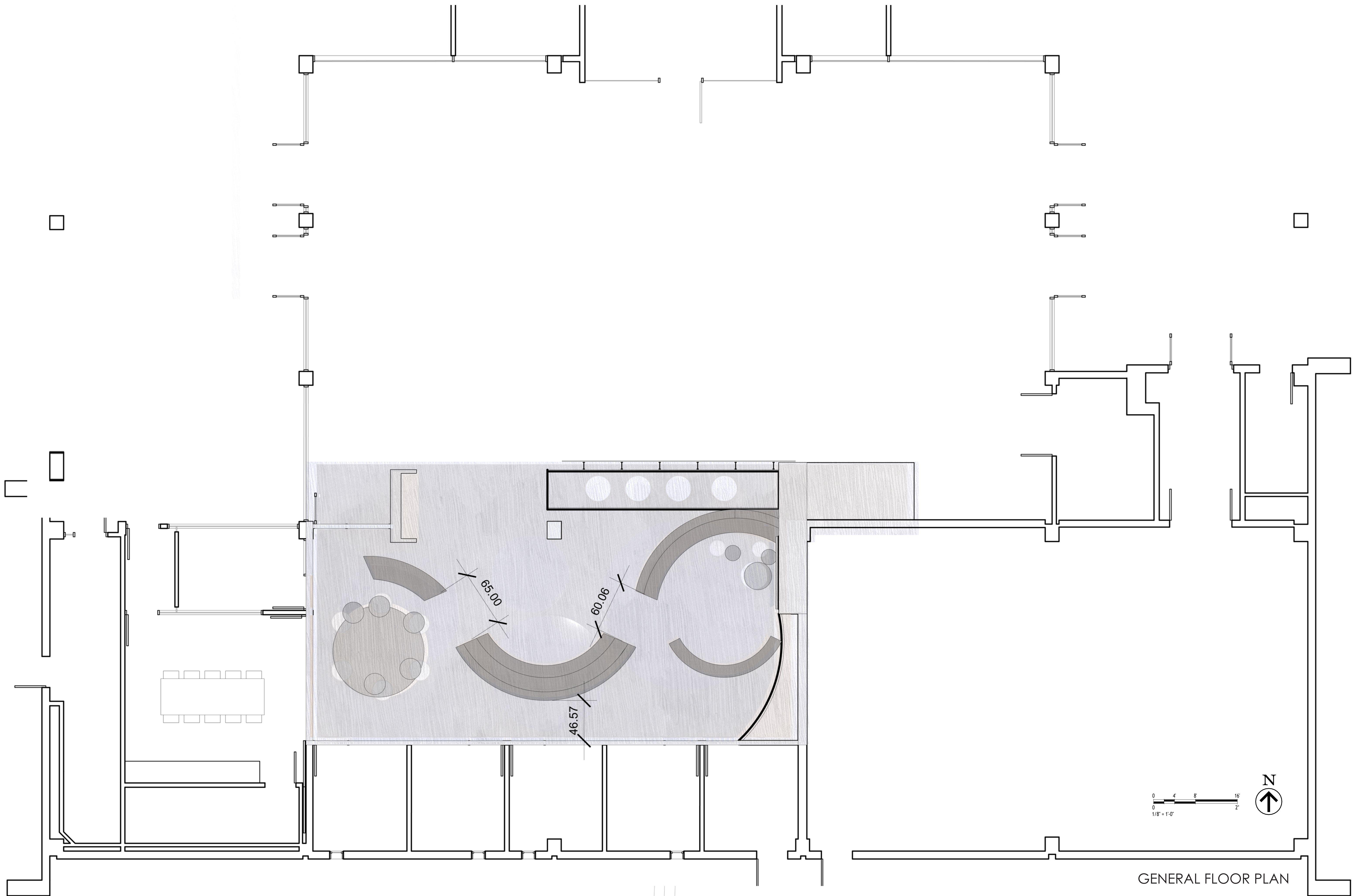
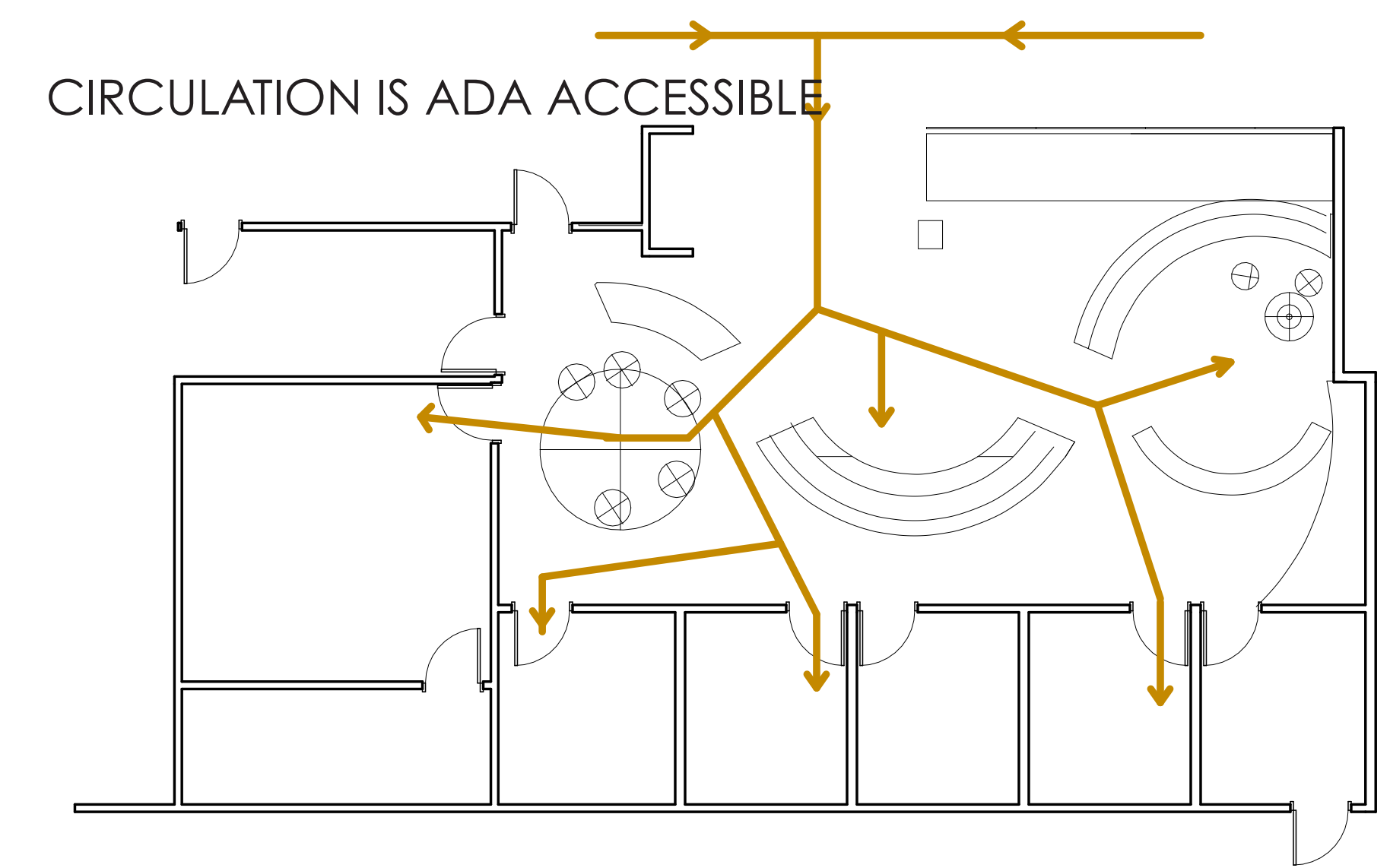
SIERRA MINOTTI, JOY CHOU, LEHAN ZHU

This space is designed to be highly adaptable and capable of hosting a wide range of events, including final reviews, the CAPLA job fair, Homecoming, student club meetings, and faculty-student potlucks. While its flexible lay-out accommodates various functions, the design is grounded in durability, using materials that will withstand mal-treatment and wear over time.

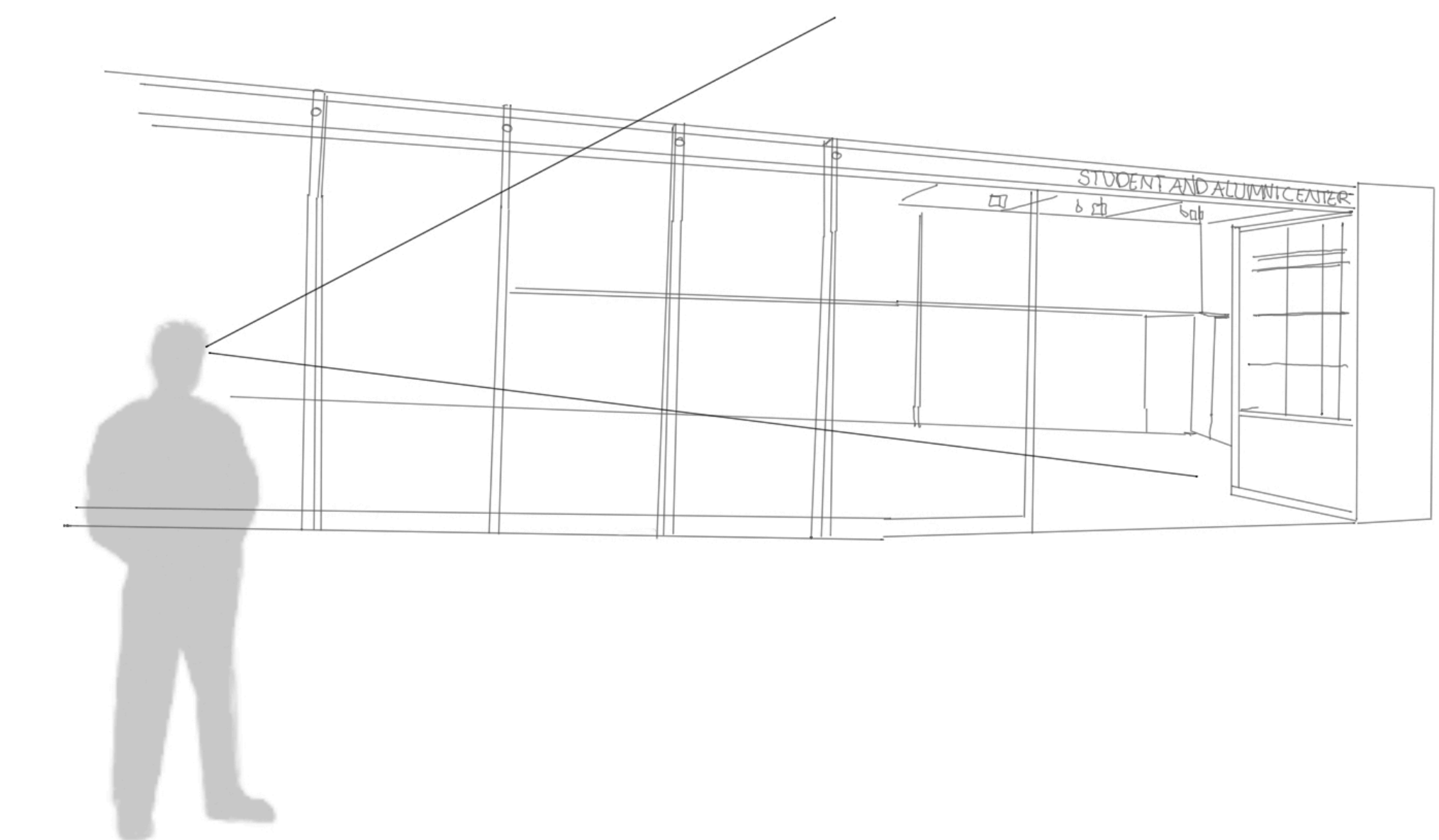
Within the first year, the space may be reconfigured to align with one of the proposed layouts, but its structure and material integrity will remain strong. By the third and fifth years, the area will likely have been reimagined multiple times, developing a natural, rustic aesthetic look that adds character to the design. By the tenth year, some components may require replacement; however, this will be a straightforward process due to its modular system. It will also serve as a valuable hands-on learning experience for CAPLA students, as all parts can either be fabricated in the CAPLA lab or sourced easily from local suppliers and stores.



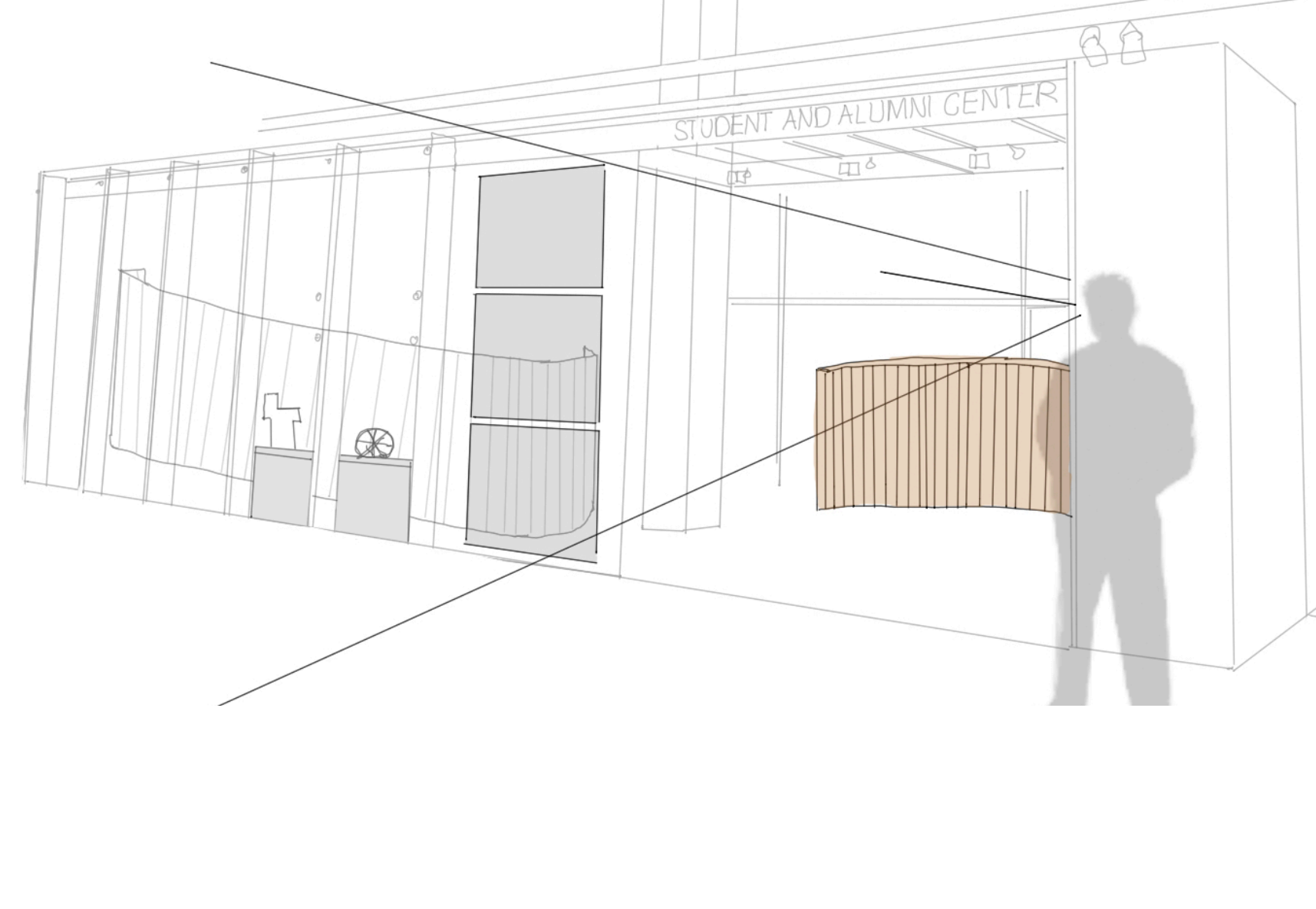
The chairs and furnishings can be easily fabricated in the CAPLA Lab, providing students with a valuable hands-on learning experience. The design utilizes a modular system, repeating a single wooden slab in multiple iterations. With its straightforward dimensions, as shown above, the construction process is simplified, making it accessible for student involvement.



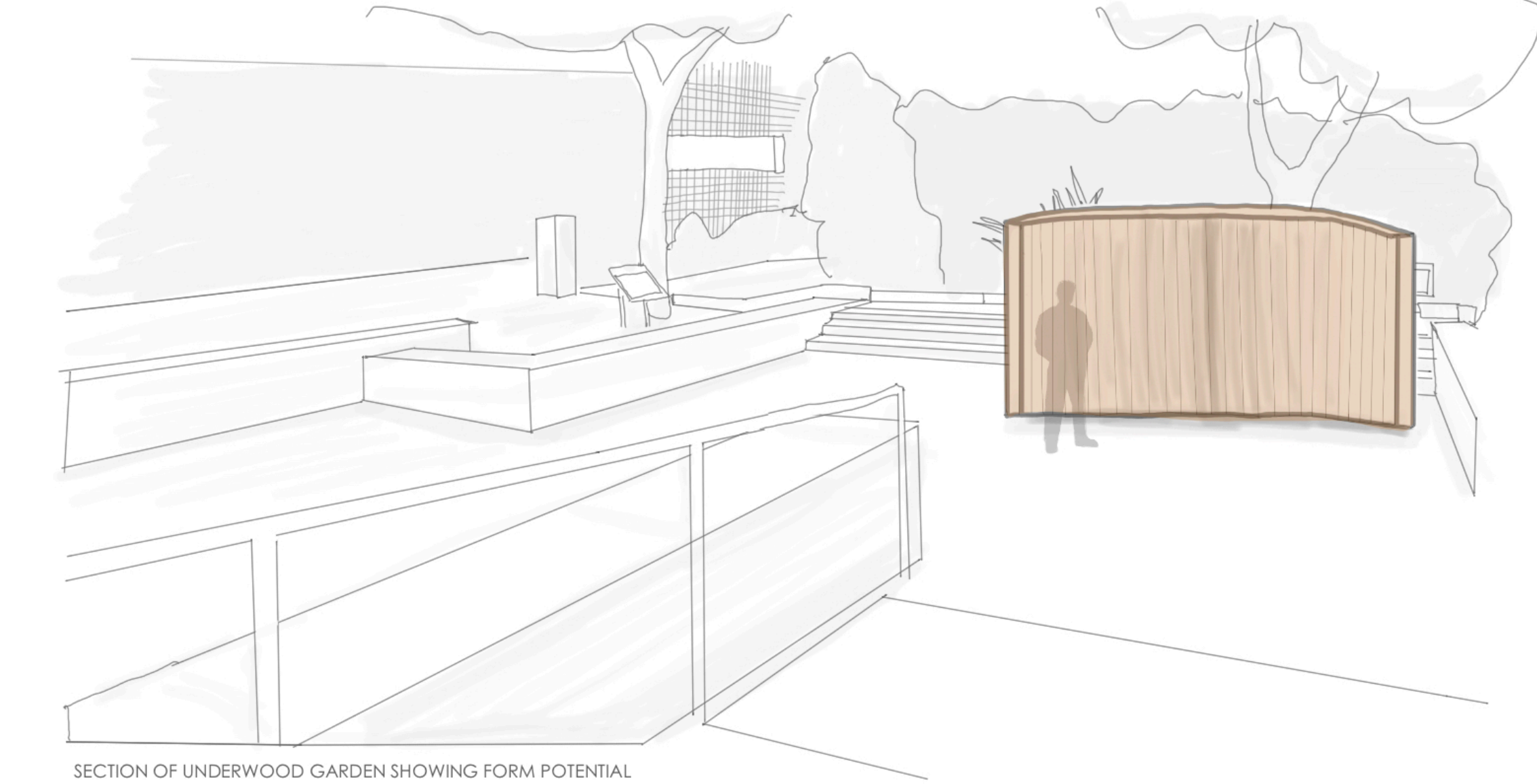
VIEW FROM DIRECTORS OFFICE



VIEW FROM ENTERANCE



EXAMPLE PLACEMENT IN THE UNDERWOOD GARDEN

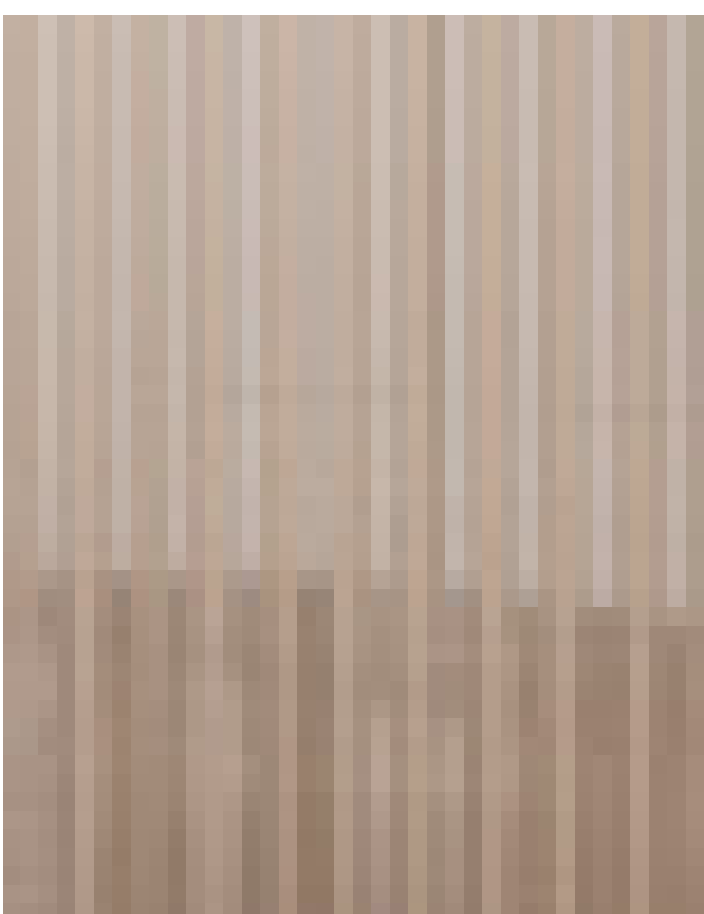


The modular nature of this system allows it to be seamlessly replicated in other areas of the CAPLA community, such as the dean's lobby across from Sundt, the outdoor Underwood Garden, and the west entrance near Olive Road by the Shell. The use of wood as the primary material establishes a cohesive, natural aesthetic that complements each of these spaces, fostering a sense of connection and continuity throughout the CAPLA environment.

## MATERIALS

Our design creates a more dynamic 'front door' to CAPLA, enhancing the building's identity and improving the visitor experience. It incorporates flexible exhibition spaces that accommodate various research displays, including printed boards, models, and other artifacts. The design also provides ample pin-up and breakout areas for Sundt studio reviews, promoting collaboration among students and faculty.

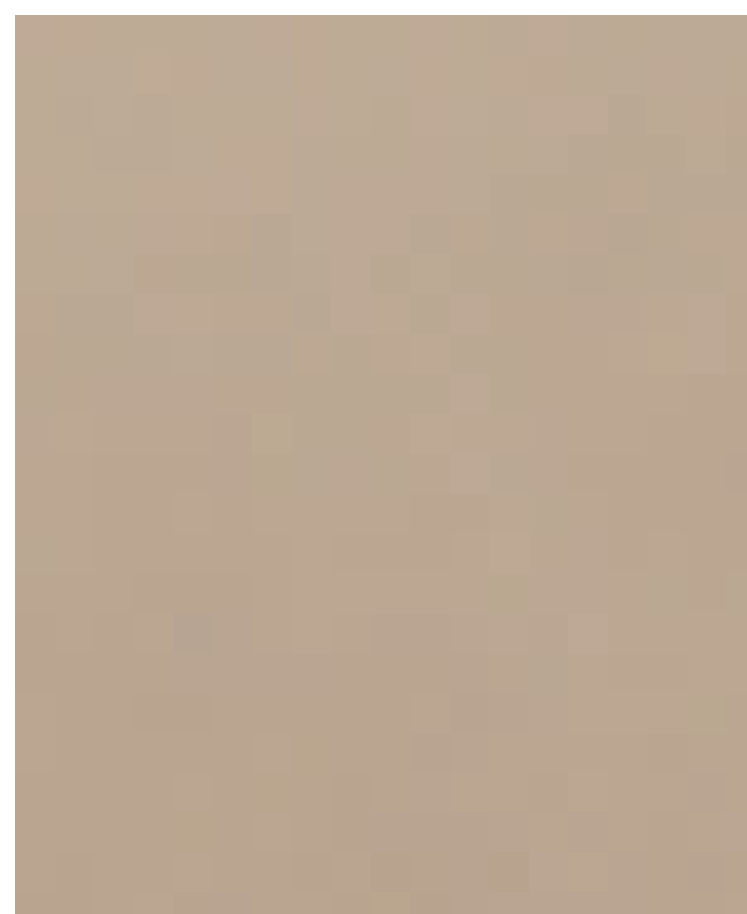
Our design utilizes softwall configurations to effectively dampen noise, creating quieter zones near the advisement offices and other sensitive areas while maintaining flexibility in the overall layout. Storage is discreetly integrated, keeping visible areas clean and professional, and additional informal meeting spaces are included to encourage casual interactions. Furthermore, the design maintains airflow and natural lighting by avoiding any elements that block ventilation or light. It also ensures full ADA compliance with accessible routes and egress throughout the space.



SOFTWALL



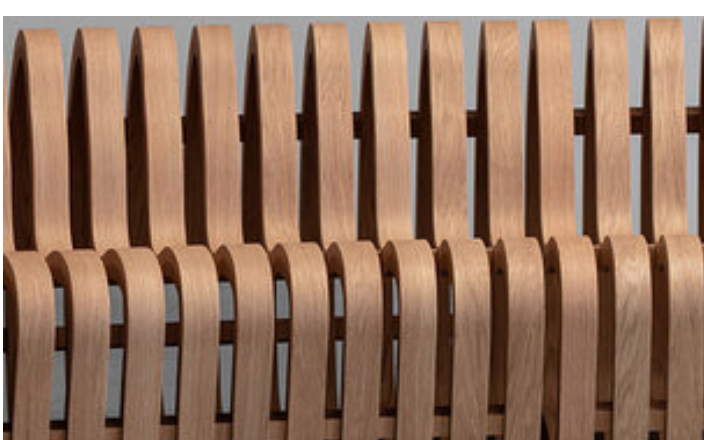
WALL



CUSHIONS



CARPET



WOOD FOR FURNATURE

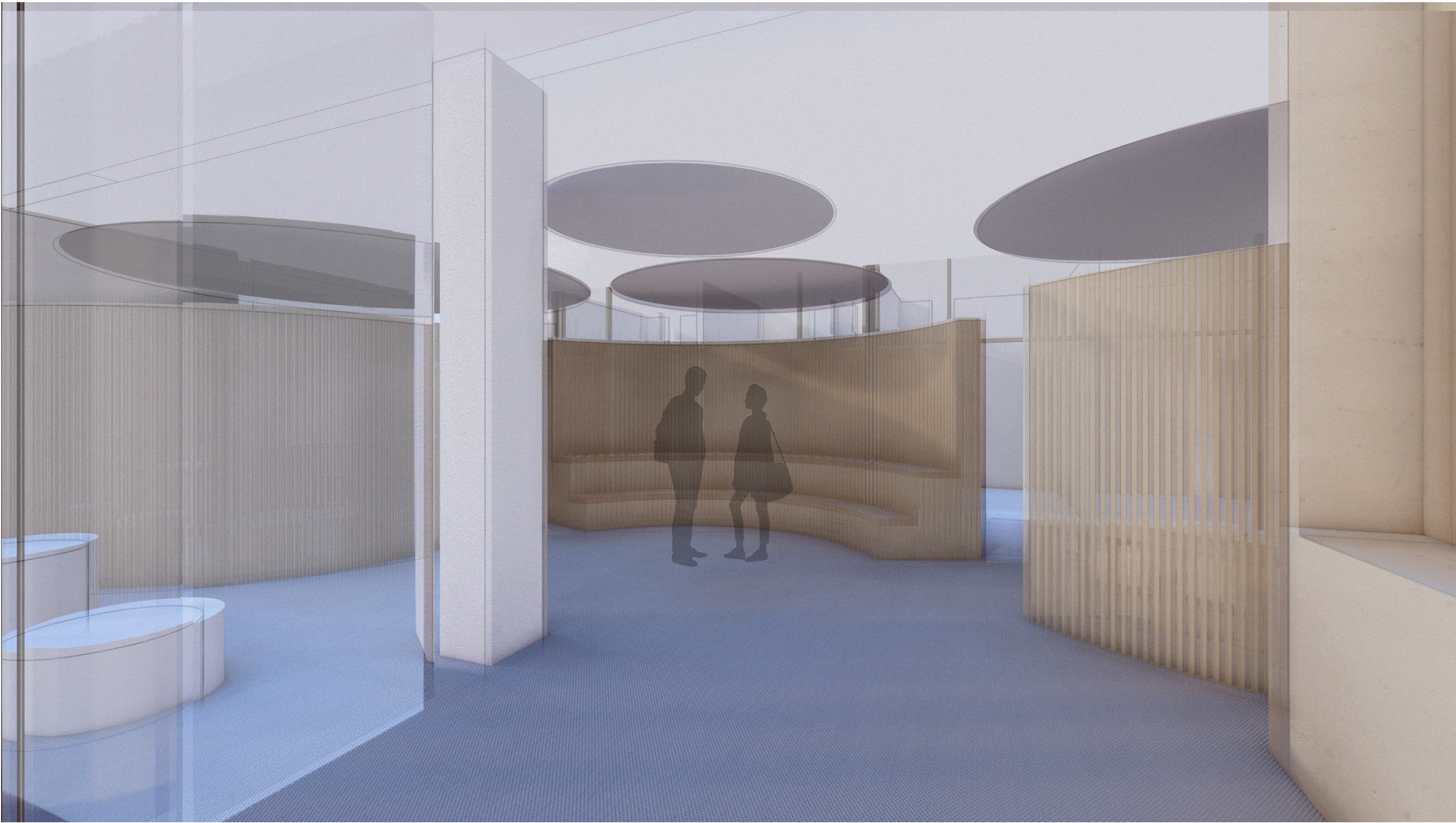


GLASS



RE-ENVISIONING THE STUDENT AND ALUMNI CENTER AT CAPLA

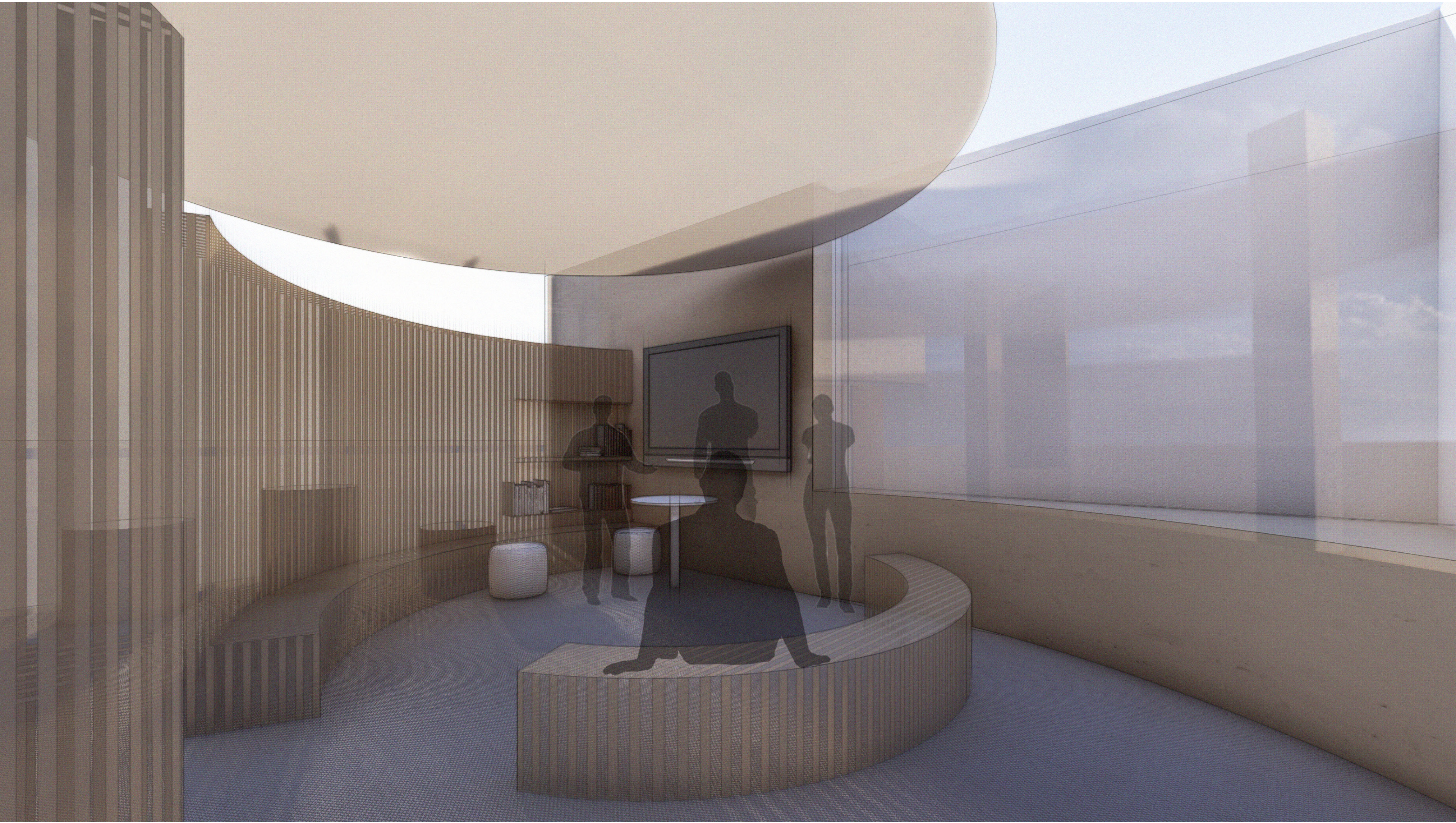
SIERRA MINOTTI, JOY CHOU, LEHAN ZHU



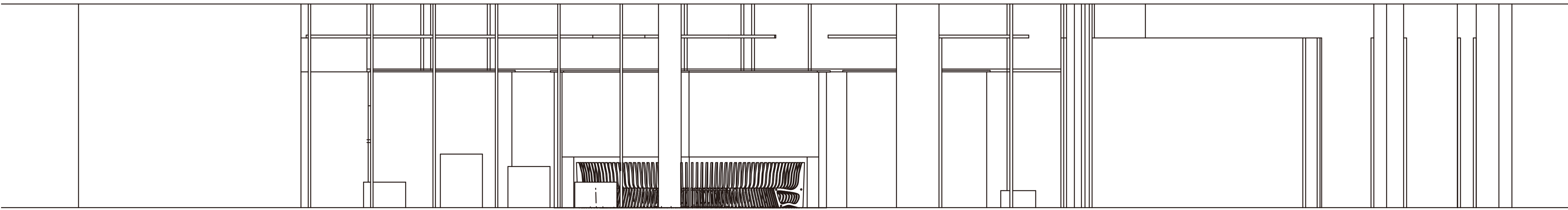
VIEW FROM ENTRANCE



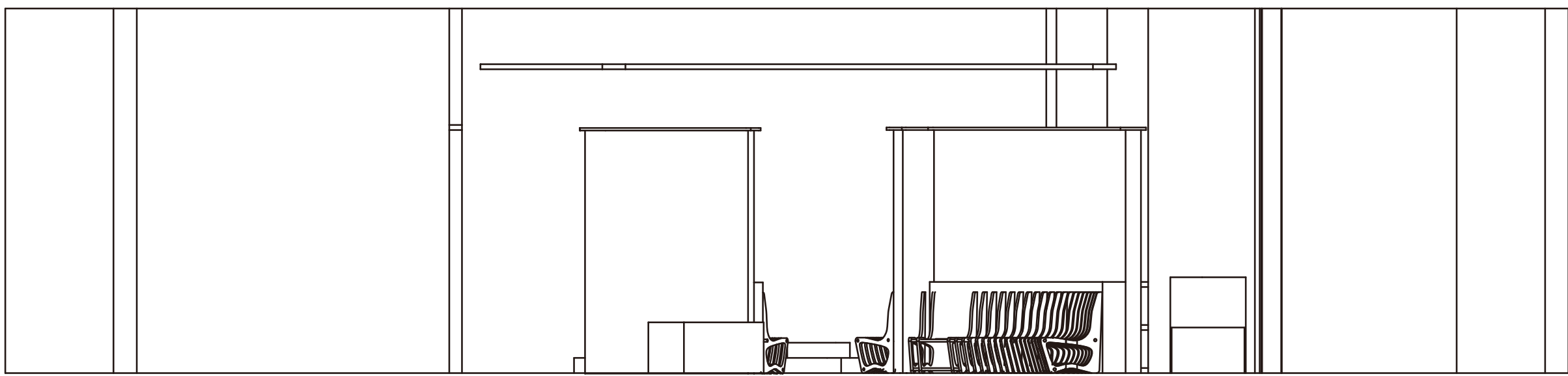
VIEW FROM WEST INTERIOR



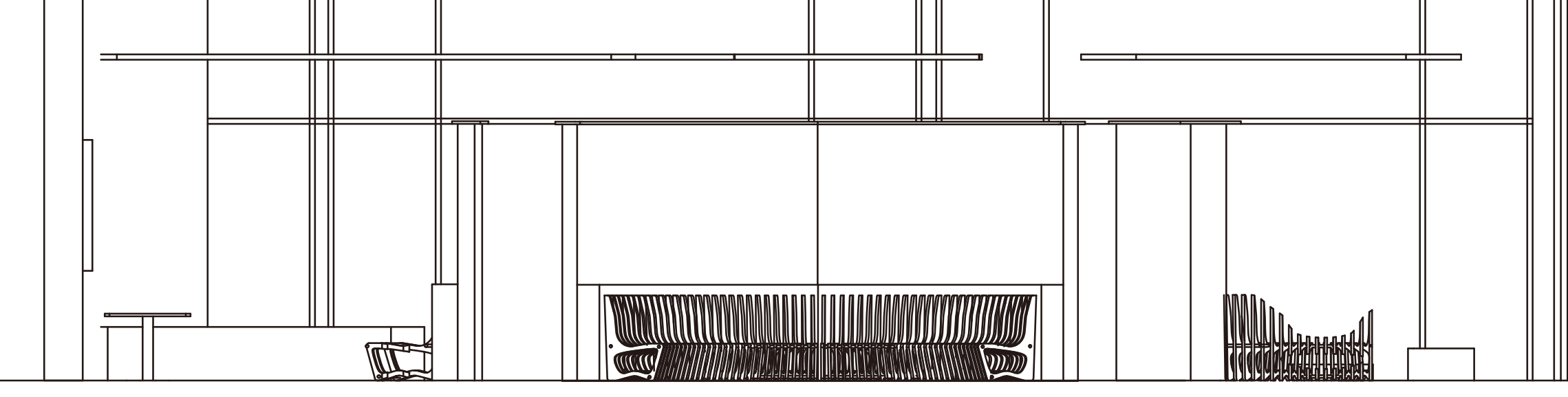
VIEW LOOKING INTO SPACE



ELEVATION FROM ENTRANCE



SECTION FROM WEST INTERIOR



SECTION FROM ENTRANCE