

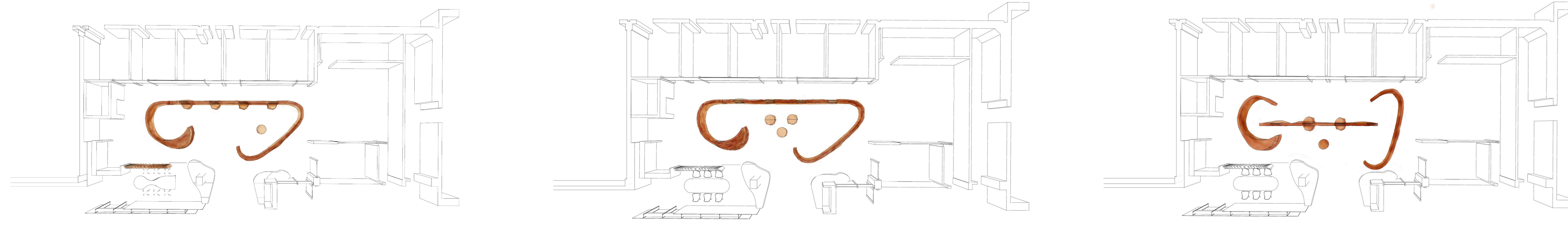
THE UNFURLING PAPYRUS

CAPLA STUDENT AND ALUMNI CENTER

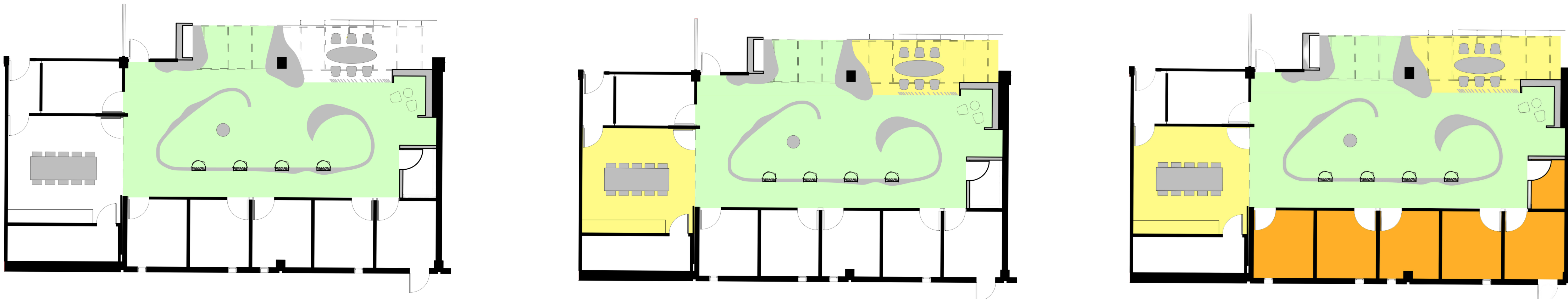
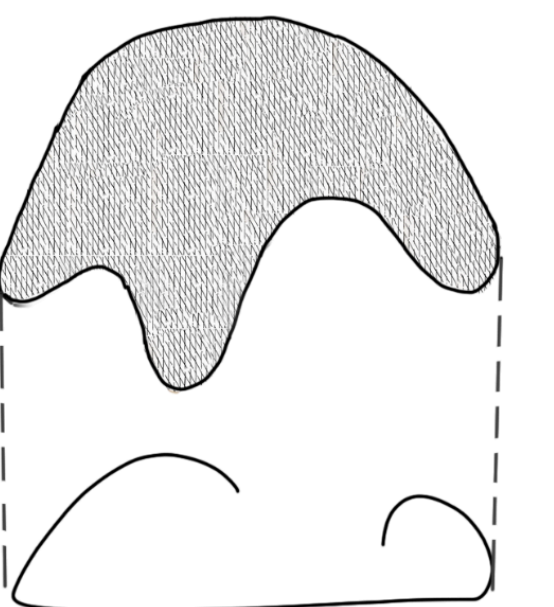
EVELYN CHIN, KELLY HUANG, Y TANG



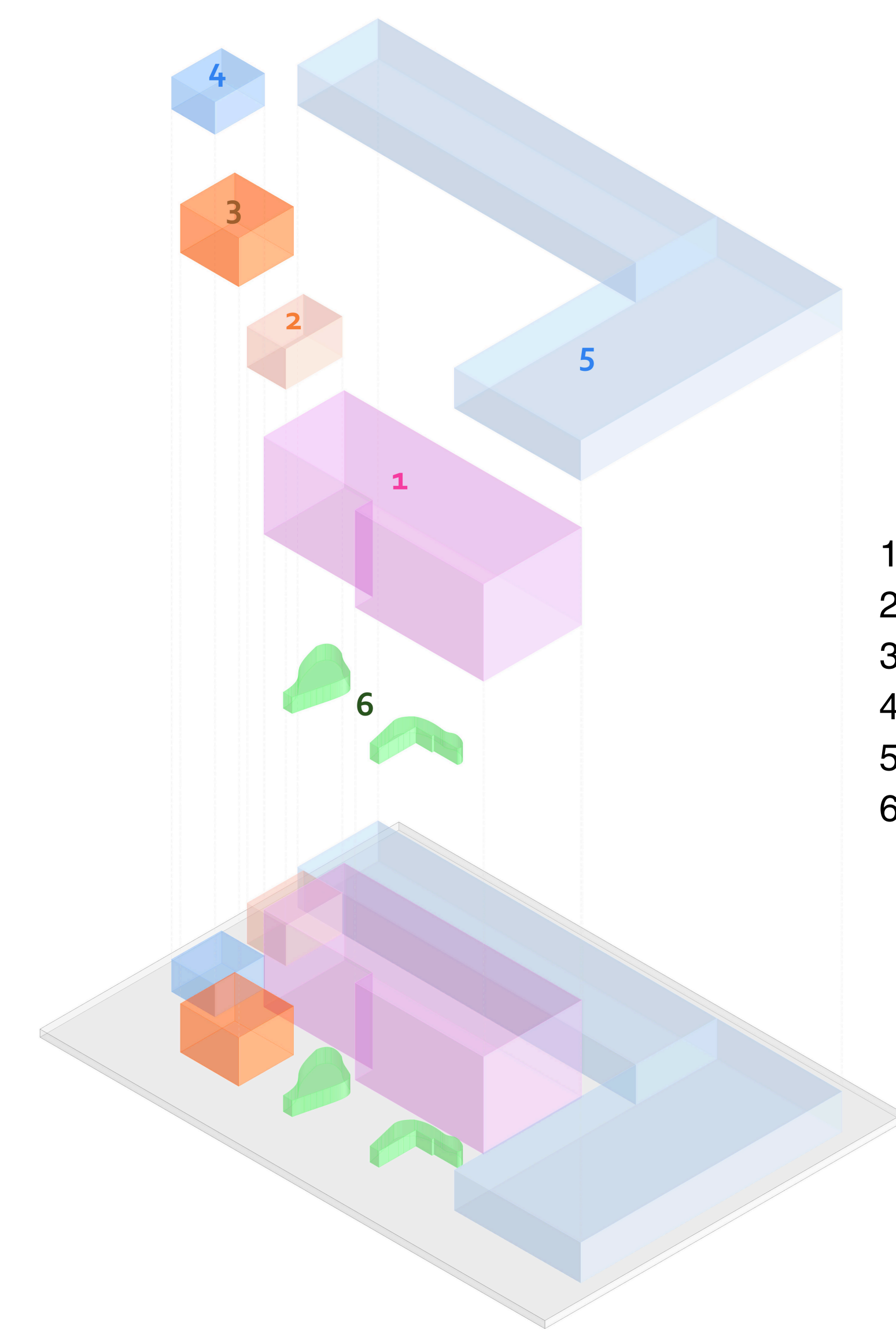
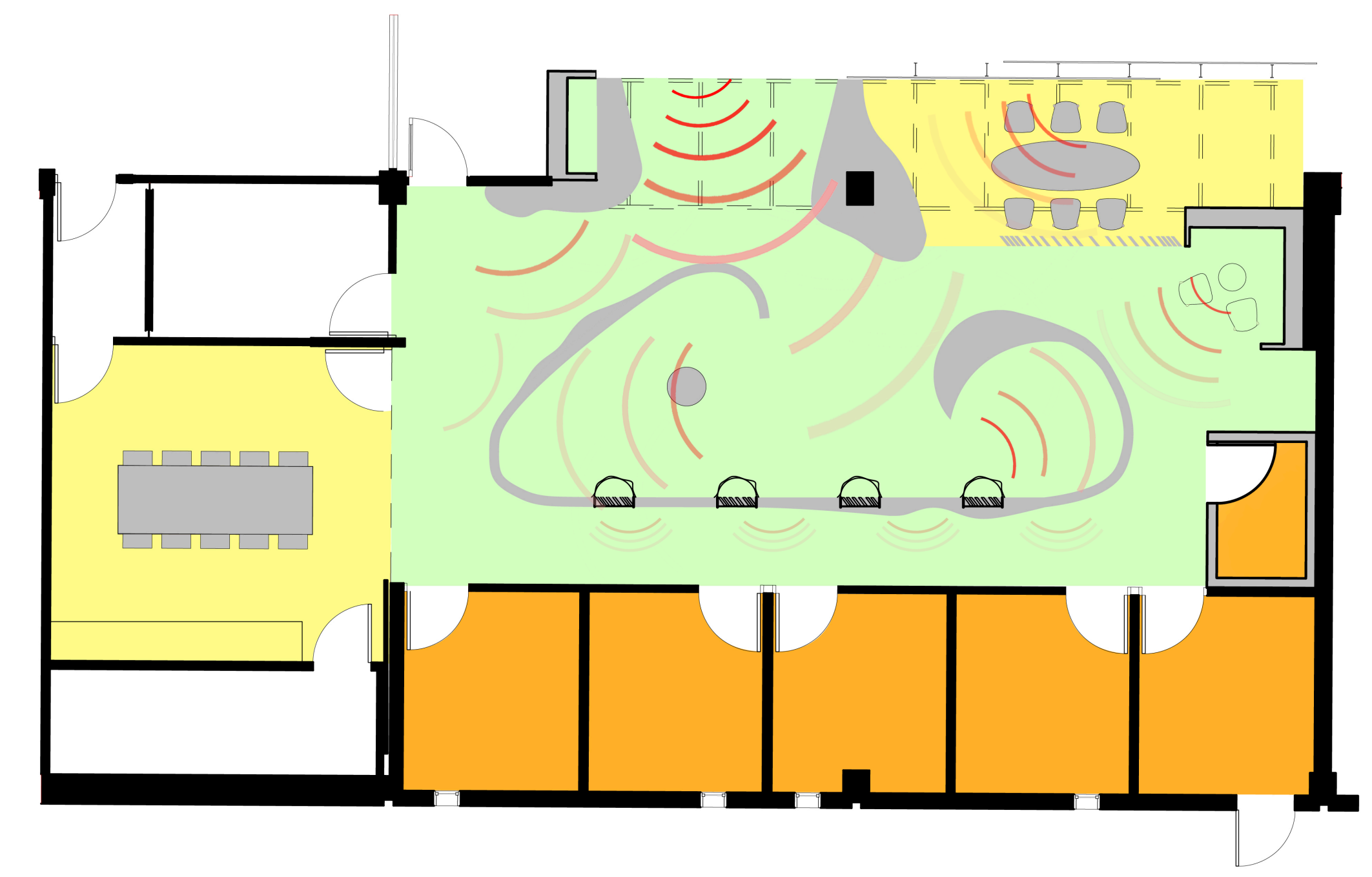
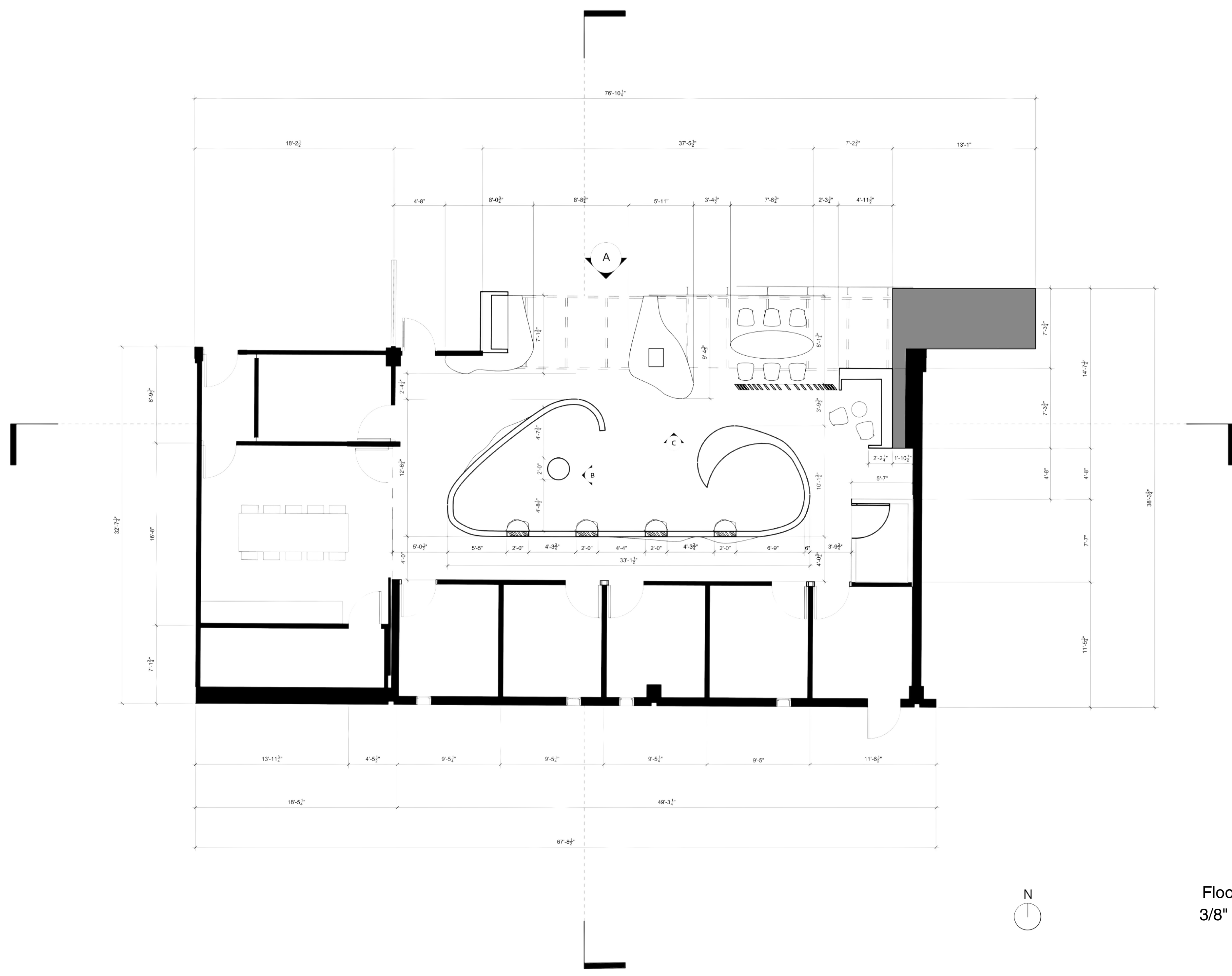
The Unfurling Papyrus, center for Students & Alumni embodies an aspirational atmosphere for students and returning alumni. By connecting the past, present, and future of CAPLA, the Unfurling Papyrus brings together a community through communal spaces, conference rooms, exhibition displays, and much more, creating an interactive experience for the CAPLA community. Upon arrival, the exhibition will showcase achievements and research by the community of CAPLA, highlighting its legacy among the collection of fellow works. Inspired by the volutes of an Ionic column, users are guided along many pathways created by the exhibition space to ensure the ease of traffic for all personnel utilizing this space. Additionally, circulation is guided towards the Drachman Institute with the help of the forms of the benches to increase visibility. Additional storage and a library are also included within the design to allow the community to study in a comfortable setting. Finally, the form of the exhibition scroll and the cork coating help dampen sounds from the Sundt gallery, allowing privacy for the offices and conference areas to ensure the comfort of those that utilizes these work spaces. The Unfurling Papyrus creates the ultimate multifunctional center with a balance between an active site and quiet, private spaces.



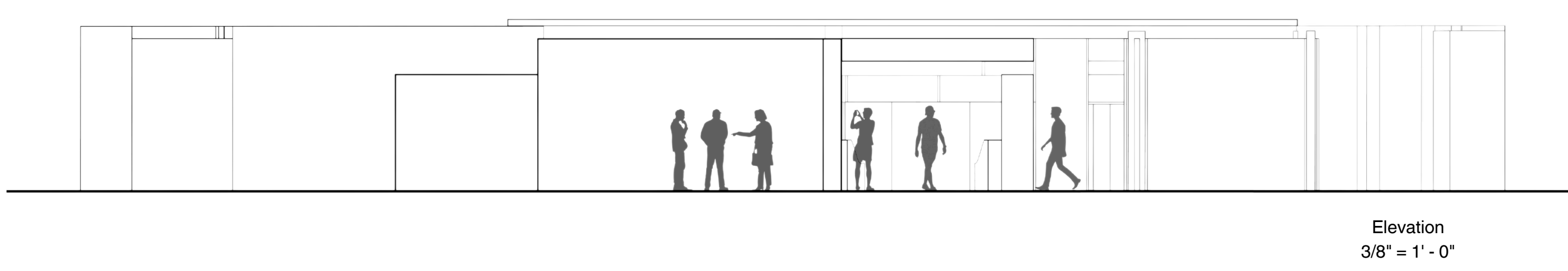
Inspired by the organic shapes found in both the Gridshell pavilion and the plants in the Sonoran Underwood Garden, the exhibit scroll exemplifies how architecture can easily be inspired by surrounding nature.



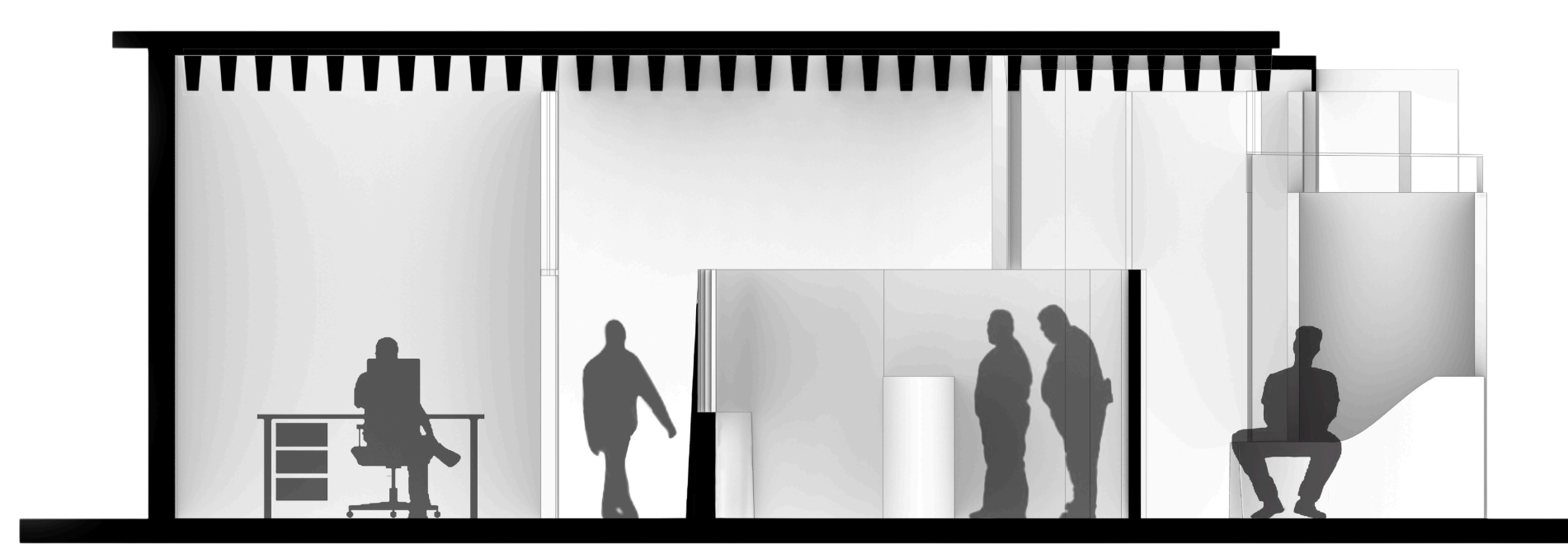
Our wooden benches leading into the Student and Alumni Center can easily be replicated across in the Dean's Office, creating a welcoming entrance that encourages communication between the two spaces.



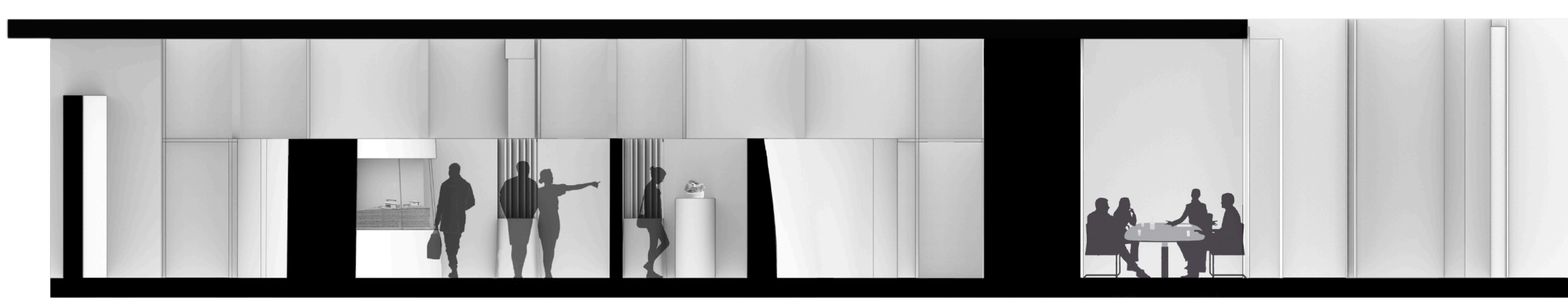
1. Exhibition
2. Storage
3. Meeting Area
4. Reading Space
5. Offices
6. Benches



Elevation
3/8" = 1'-0"



Vertical Section



Horizontal Section

