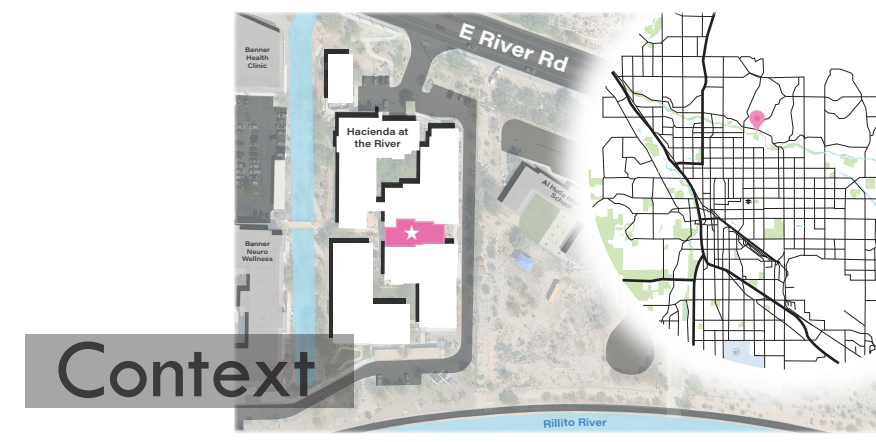
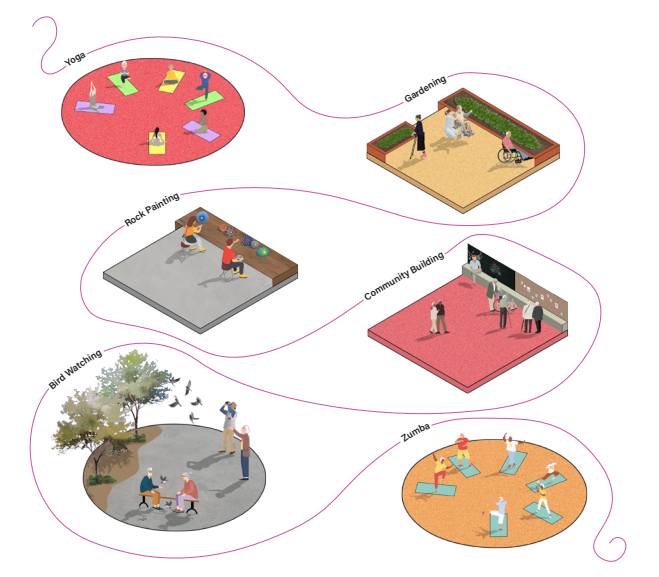


WATERMARK'S RE-IMAGINED THERAPEUTIC GARDEN

This proposed design provides a thoughtful and resilient solution that supports both daily experience and long-term care of the site. It creates a landscape that strengthens wellness, encourages community, and adapts as needs change. The proposal stays true to the goals of the Watermark community and offers a space that brings lasting value and meaningful experiences for residents.



Program Diagram



Garden Goals

- Enhance Safety & Accessibility
- Engage the Five Senses
- Activate Both Physical & Cognitive Abilities

THE ACTIVITY ZONE

The entrance opens into the garden's most active zone, where movement, gathering, and daily engagement naturally unfold. This threshold sets the tone for the space, inviting residents into a lively landscape filled with energy and purpose.



ACTIVATING THE FIVE SENSES

TOUCH

The planting palette is crafted to invite residents into the garden, offering spaces for them to tend and grow.

AUDITORY

The proposed native vegetation will draw birds into the garden, filling the space with their song.

SIGHT

Vibrant blooms awaken the sense of sight as color and light move through the garden with every step.

SMELL

Scents woven through the planting palette will drift across the garden.

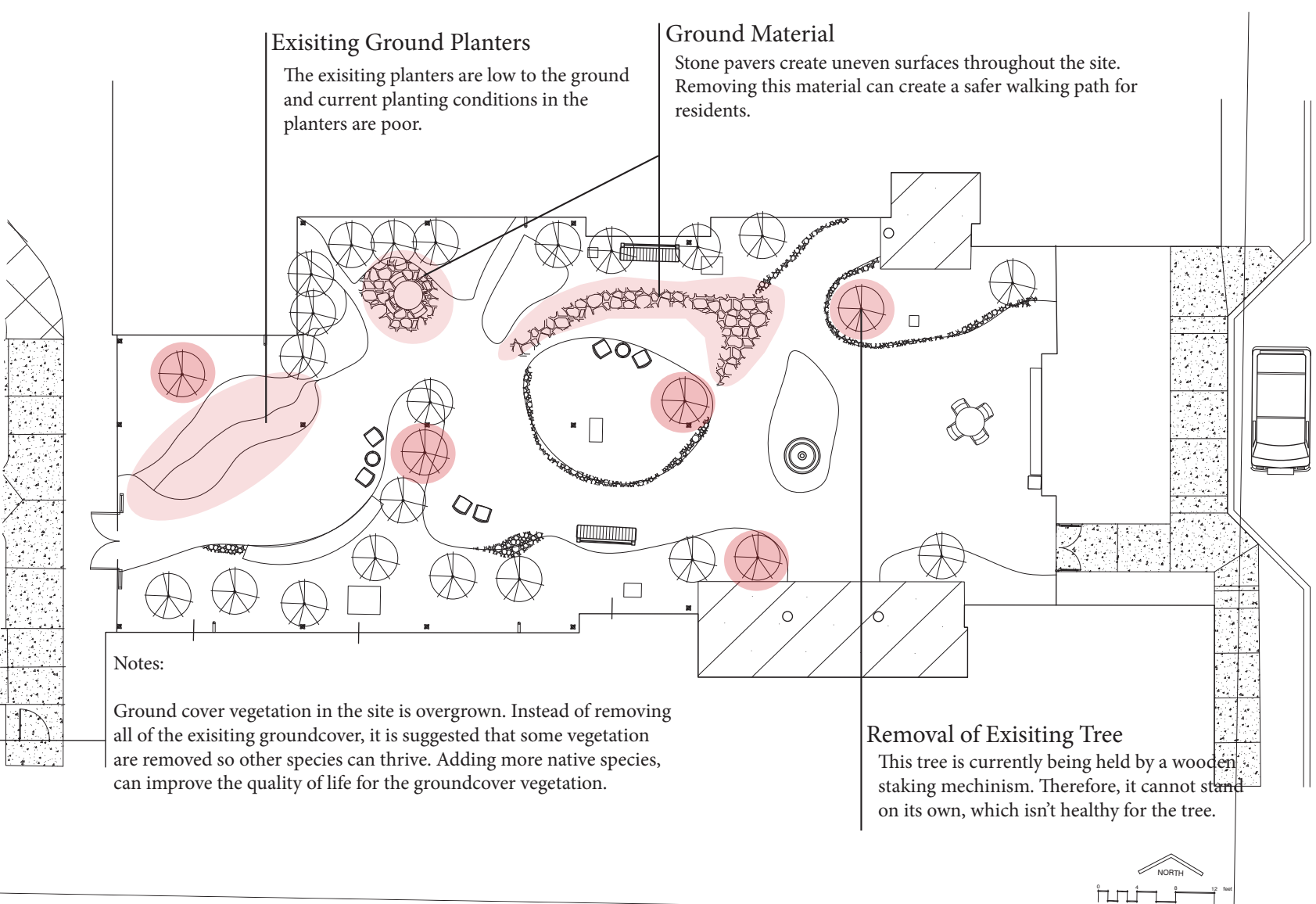
TASTE

Fruit trees nurture the sense of taste as their harvests become ingredients for the meals and dishes that bring the retirement community together.

AUDITORY

Windchimes crafted in resident classes are tied to the trees and bring the sense of sound into the garden as gentle tones move through the space.

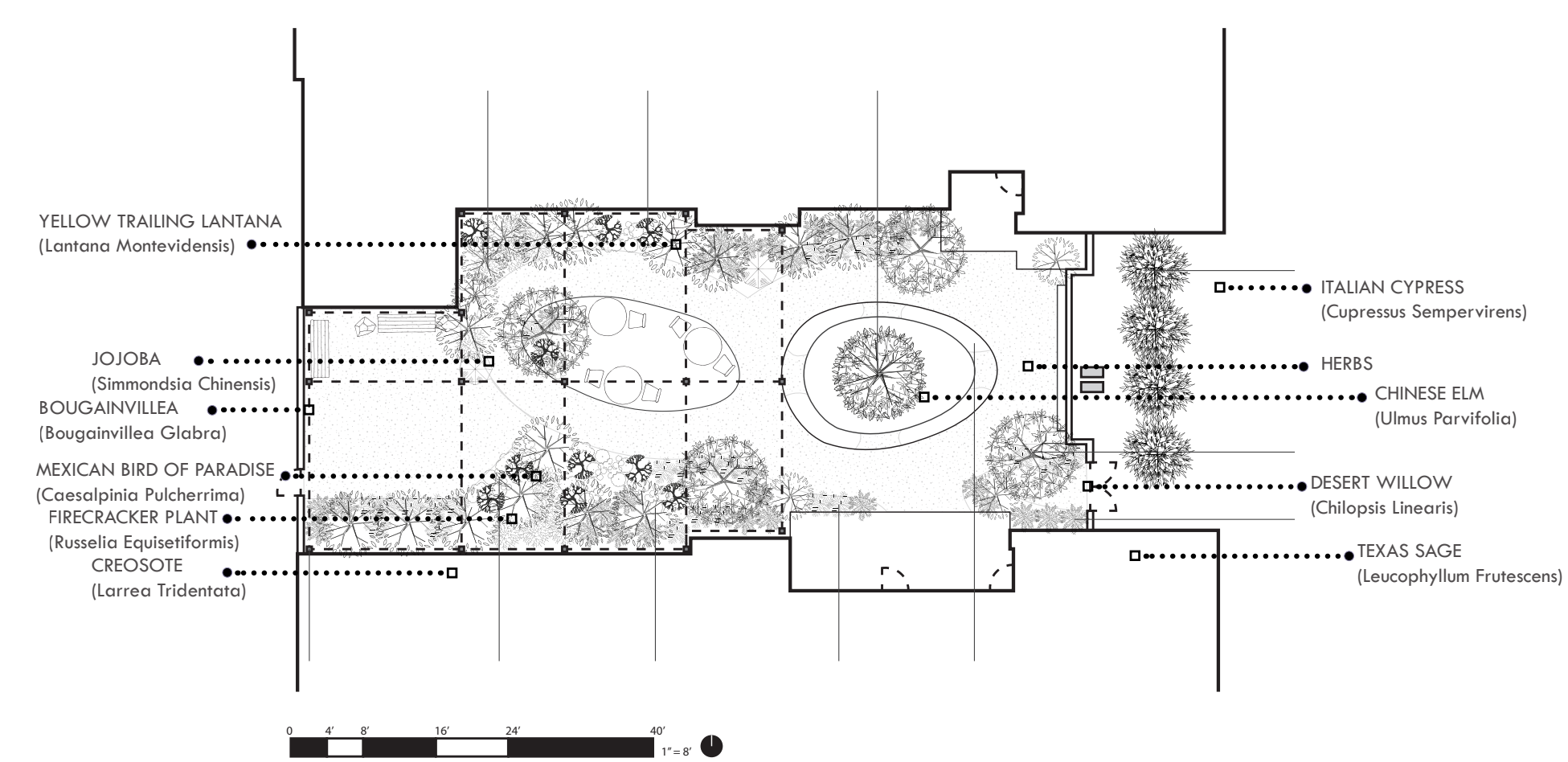
DEMO PLAN



Existing Planting

- Trees**
Qty. of diverse species: 17
Native Species: 4
- Shrubs & Perennials**
Qty. of diverse species: 10
Native Species: 6
- Grasses & Textural**
Qty. of diverse species: 3
Native Species: 1
- Flowering Plants &**
Qty. of diverse species: 17
Native Species: 11
- Vines & Climbers**
Qty. of diverse species: 3
Native Species: 1
- Herbs & Edibles**
Qty. of diverse species: 19
Native Species: 4

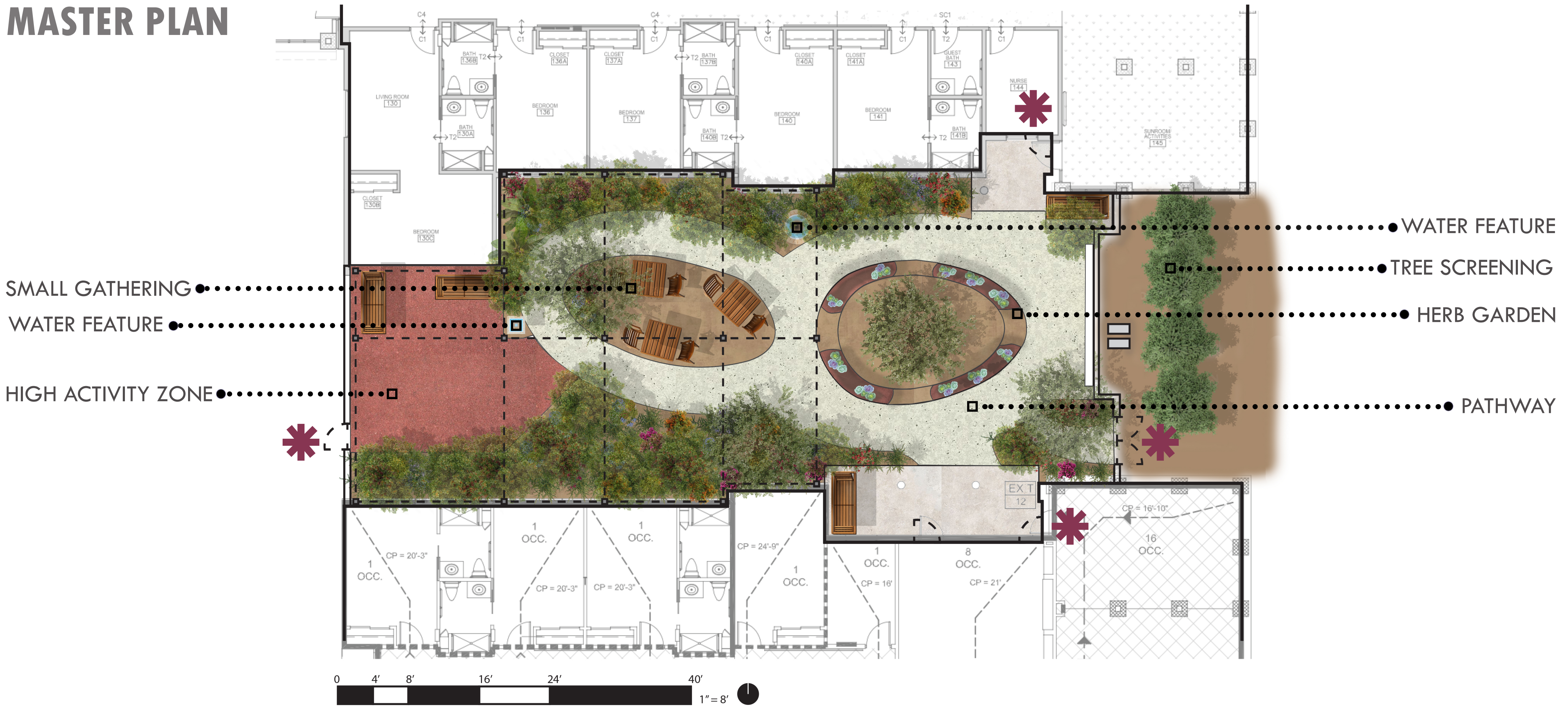
PLANTING PALETTE



THE WATERMARK GARDEN LOOP

A PLACE WHERE SENSORY ENCOUNTERS
CREATE MEANINGFUL MOMENTS

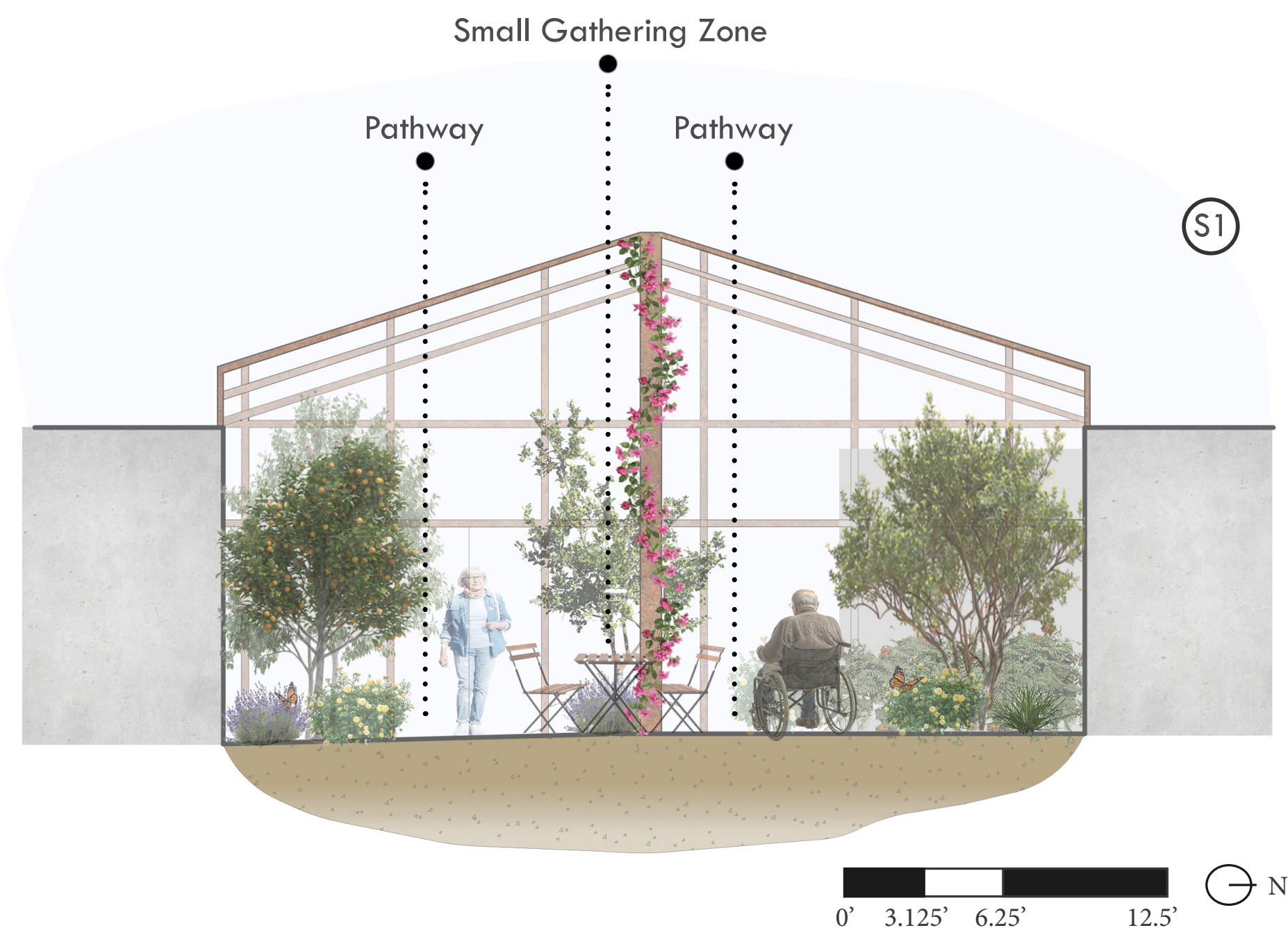
MASTER PLAN



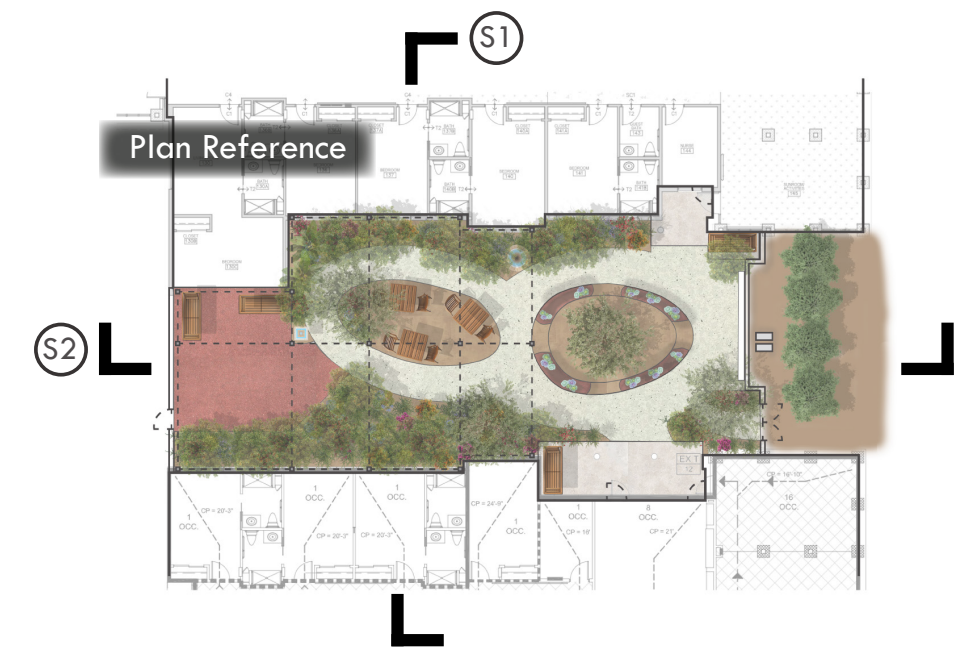
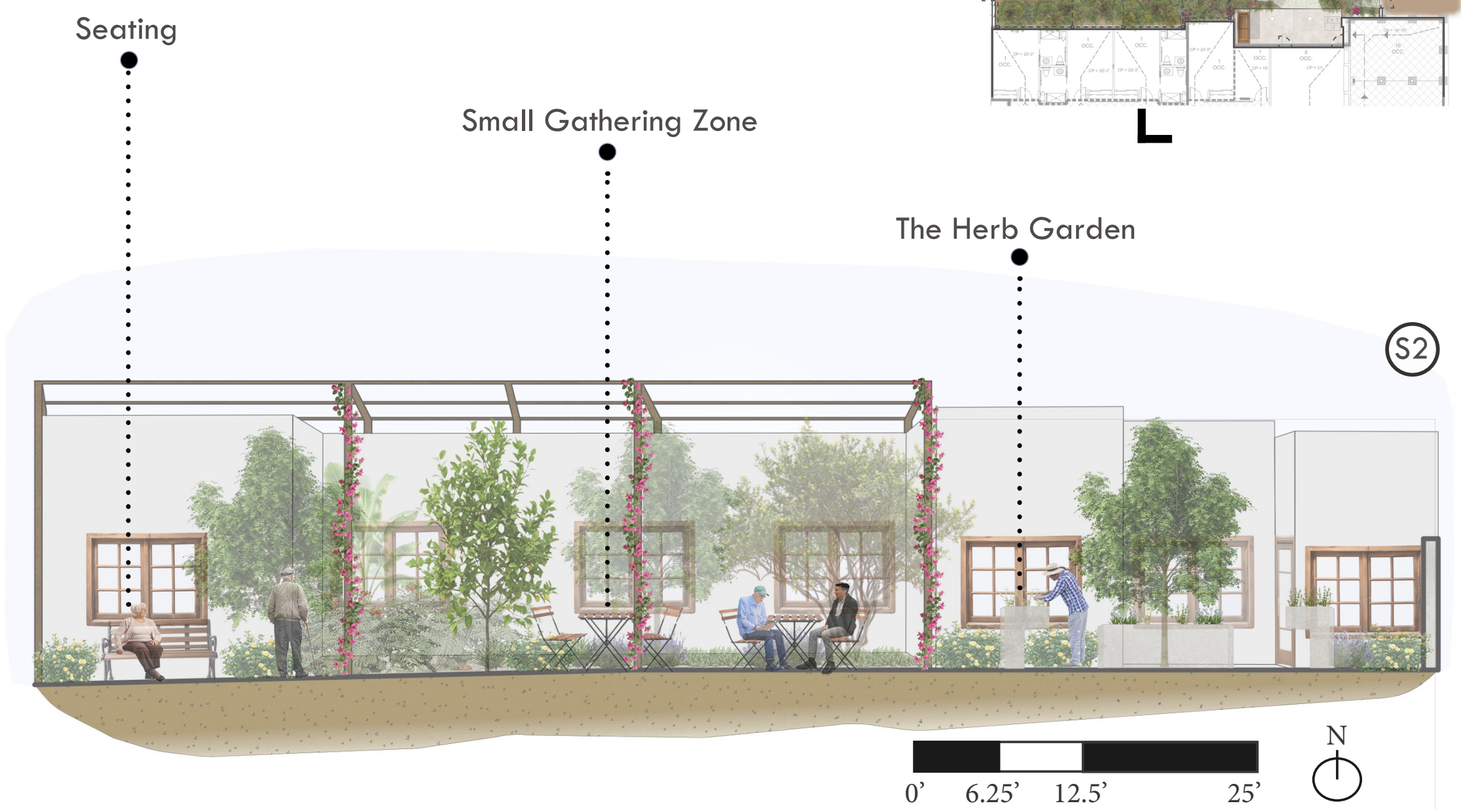
CONCEPTUALIZING THE SPACE

SECTION CUTS

CROSS - SECTION: NORTH TO SOUTH



CROSS - SECTION: EAST TO WEST



THE HERB GARDEN

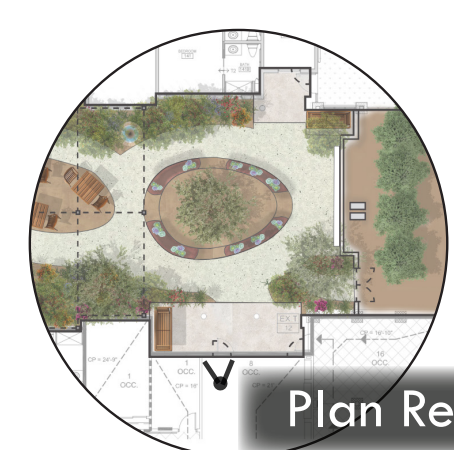
This perspective looks out from the theater room window in memory care, revealing the quiet outdoor space just beyond the glass.

POLLINATOR ATTRACTION

WATER FEATURE

WHEELCHAIR ACCESSIBLE PLANTER

RESIDENTS' PAINTED ROCKS



Understanding the Elements That Shape a Meaningful Garden Experience:

In the reimagined herb garden, every feature activates the senses and brings the space to life for the retirement community. Windchimes made in crafting classes fill the air with gentle sound and the water feature adds a steady calming rhythm. The scent of herbs and pollinator plants drifts through the garden and residents can feel the textures as they tend to the wheelchair-accessible planters. Painted rocks create bright moments of color and the community bulletin board adds visual interest and connection. Soft rubber mulch underfoot completes the sensory experience and makes the garden welcoming to all.