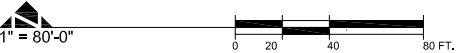


SITE PLAN



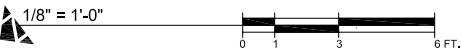
**HERMIT'S REST
GRAND CANYON NATIONAL PARK**

THE UNIVERSITY OF ARIZONA
PRESERVATION STUDIES PROGRAM
COLLEGE OF ARCHITECTURE AND
LANDSCAPE ARCHITECTURE

DECEMBER 2007

DRAWING
1

ROOF PLAN

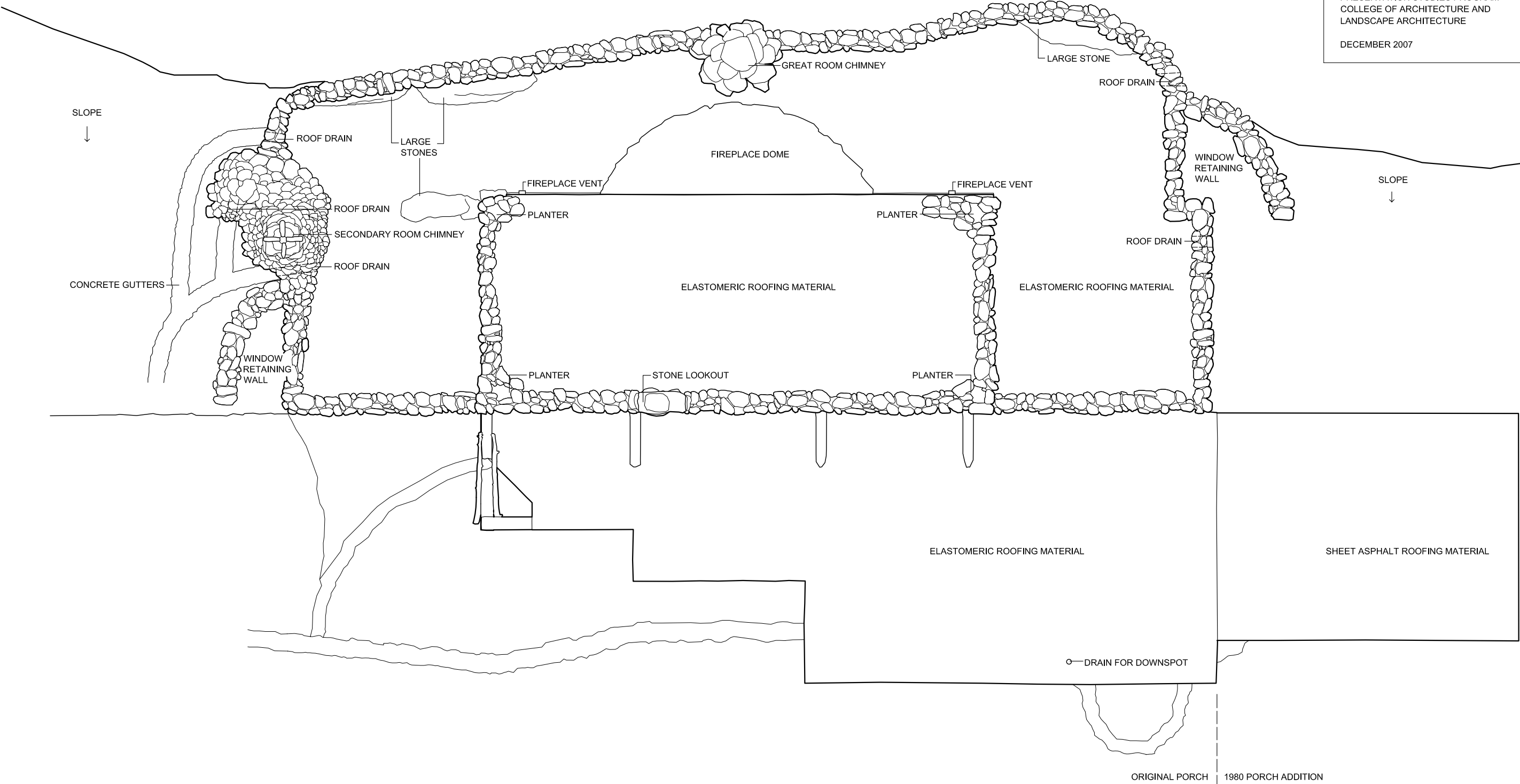


HERMIT'S REST
GRAND CANYON NATIONAL PARK

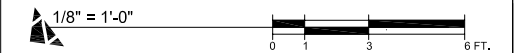
THE UNIVERSITY OF ARIZONA
PRESERVATION STUDIES PROGRAM
COLLEGE OF ARCHITECTURE AND
LANDSCAPE ARCHITECTURE

DECEMBER 2007

DRAWING
2



PLAN



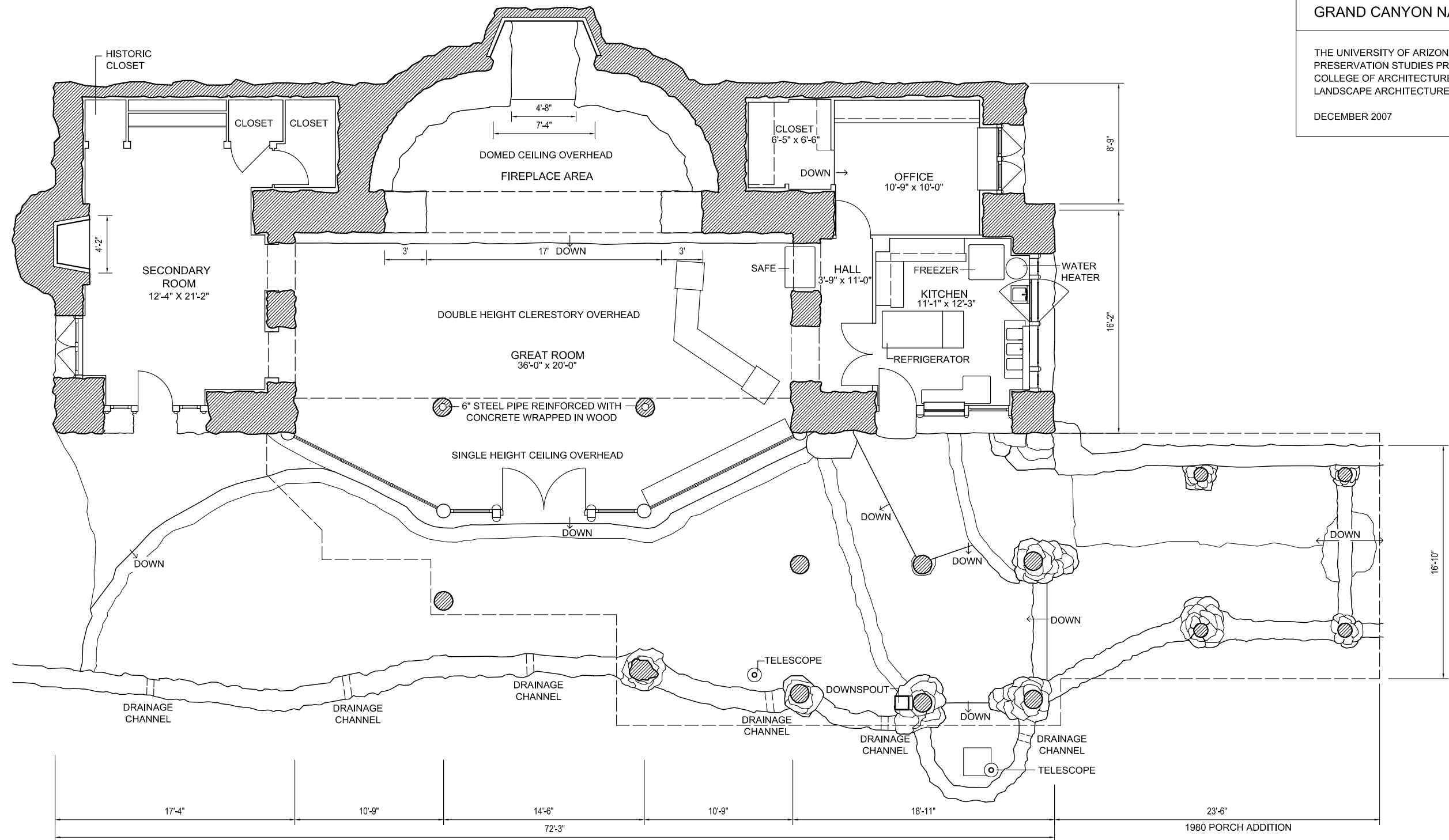
HERMIT'S REST
GRAND CANYON NATIONAL PARK

THE UNIVERSITY OF ARIZONA
PRESERVATION STUDIES PROGRAM
COLLEGE OF ARCHITECTURE AND
LANDSCAPE ARCHITECTURE

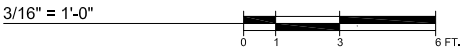
DECEMBER 2007

DRAWING

3



NORTH ELEVATION

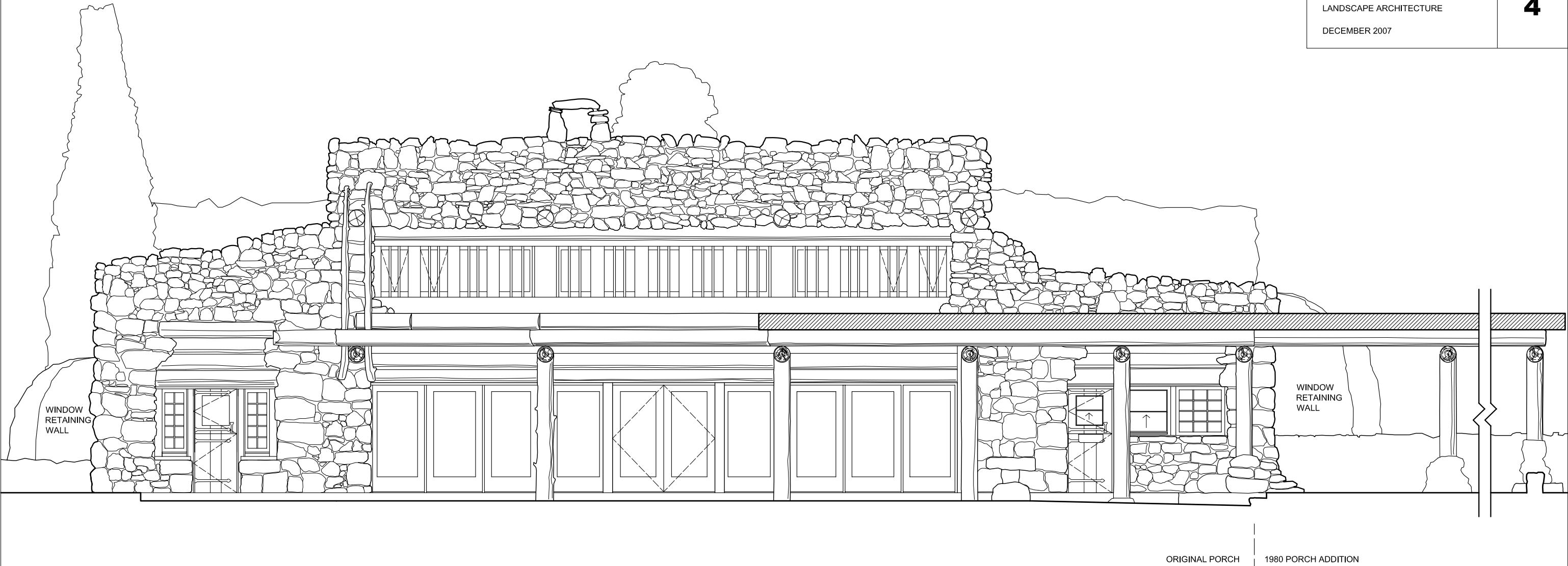


HERMIT'S REST
GRAND CANYON NATIONAL PARK

THE UNIVERSITY OF ARIZONA
PRESERVATION STUDIES PROGRAM
COLLEGE OF ARCHITECTURE AND
LANDSCAPE ARCHITECTURE

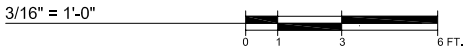
DECEMBER 2007

DRAWING
4



RENDERING INDICATES THE QUALITY OF INDIVIDUAL STONES, NOT ACTUAL SIZE

EAST ELEVATION

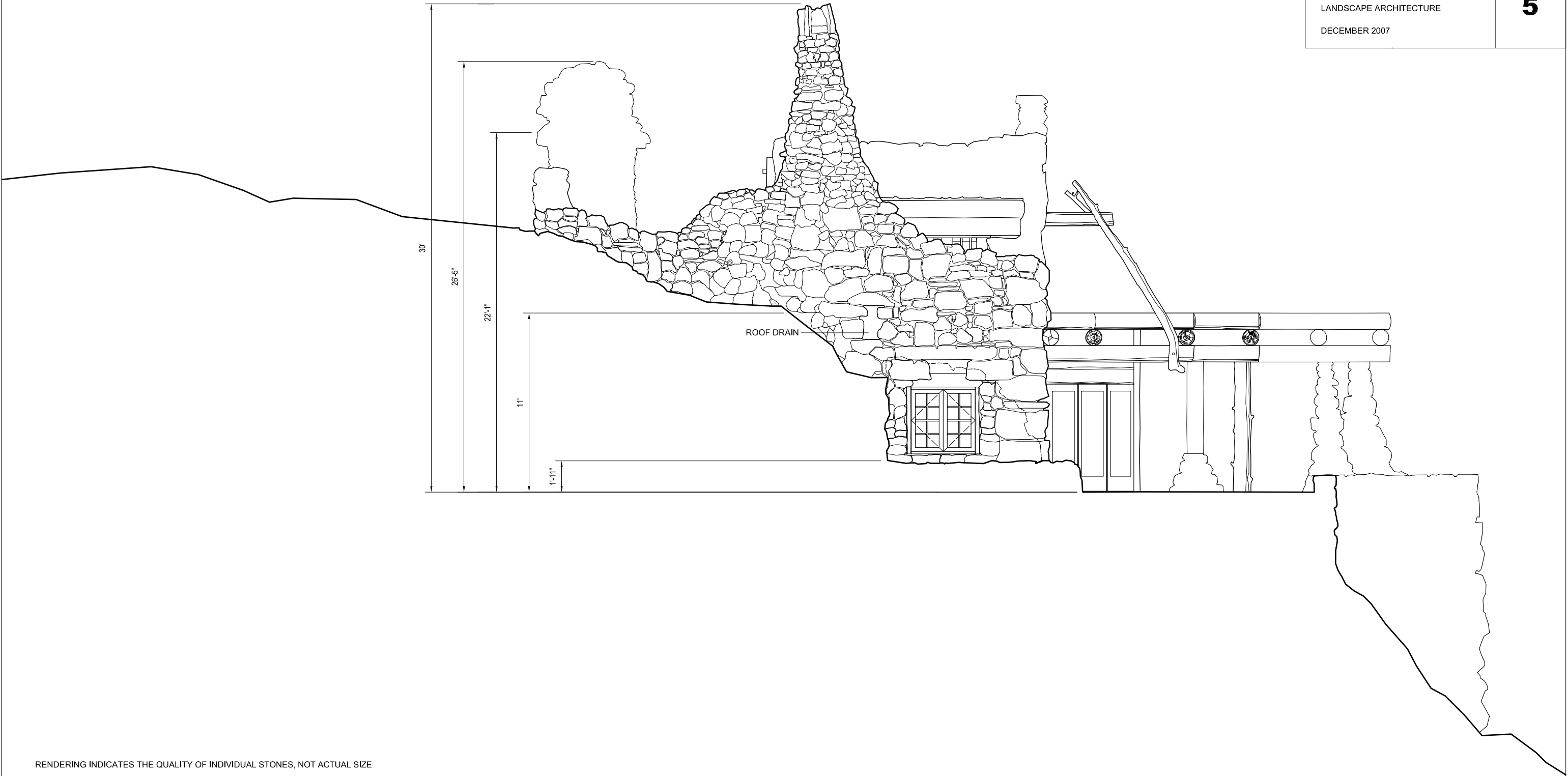


HERMIT'S REST
GRAND CANYON NATIONAL PARK

THE UNIVERSITY OF ARIZONA
PRESERVATION STUDIES PROGRAM
COLLEGE OF ARCHITECTURE AND
LANDSCAPE ARCHITECTURE

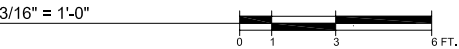
DECEMBER 2007

DRAWING
5



RENDERING INDICATES THE QUALITY OF INDIVIDUAL STONES, NOT ACTUAL SIZE

WEST ELEVATION

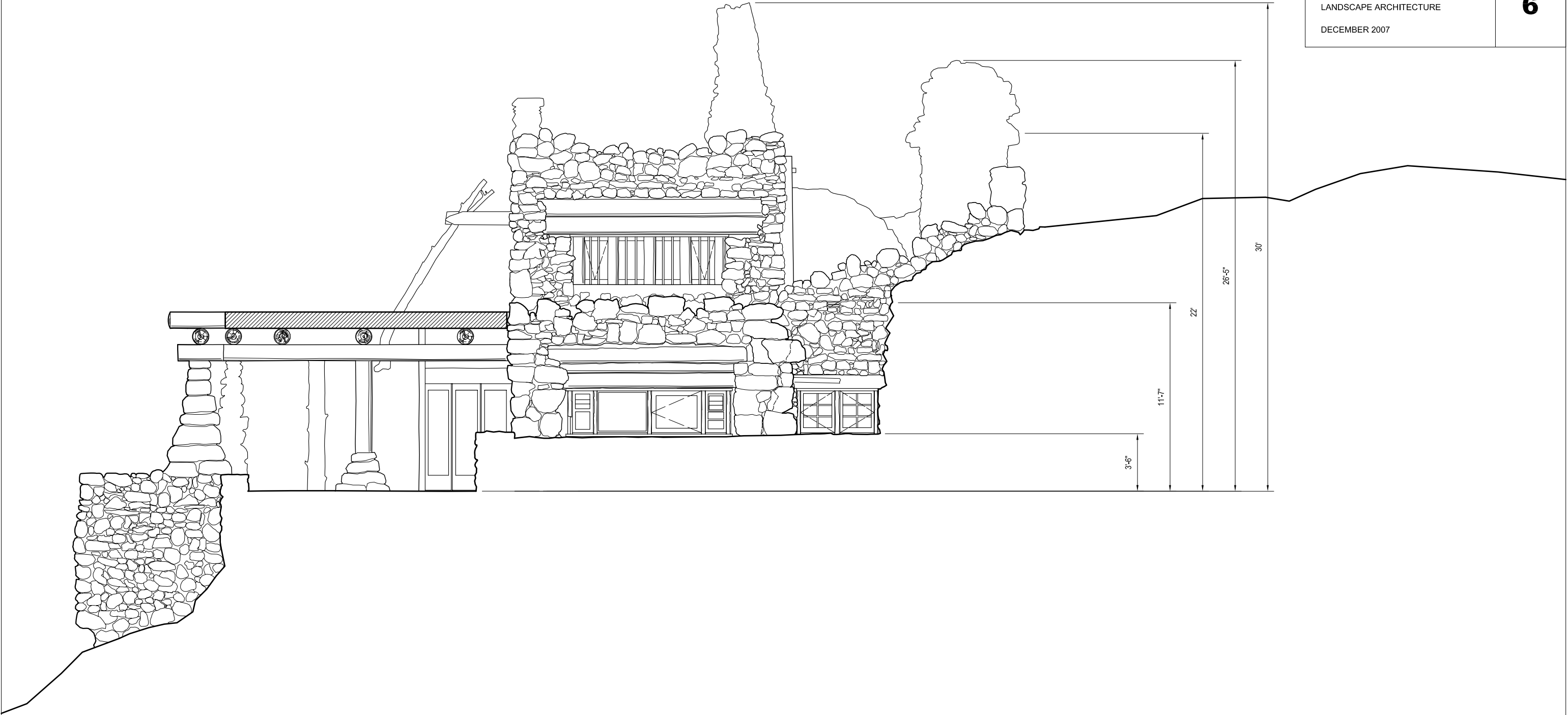


HERMIT'S REST
GRAND CANYON NATIONAL PARK

THE UNIVERSITY OF ARIZONA
PRESERVATION STUDIES PROGRAM
COLLEGE OF ARCHITECTURE AND
LANDSCAPE ARCHITECTURE

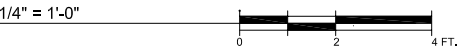
DECEMBER 2007

DRAWING
6



RENDERING INDICATES THE QUALITY OF INDIVIDUAL STONES, NOT ACTUAL SIZE

SITE FEATURES

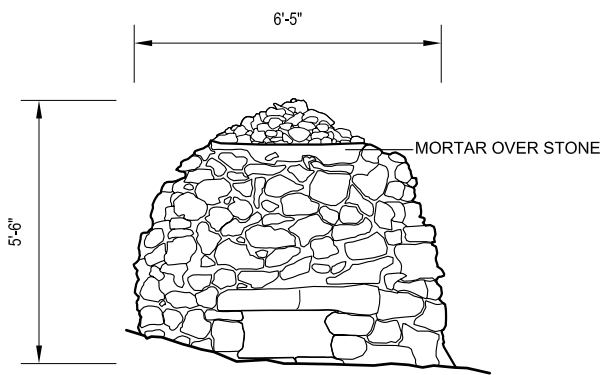


HERMIT'S REST
GRAND CANYON NATIONAL PARK

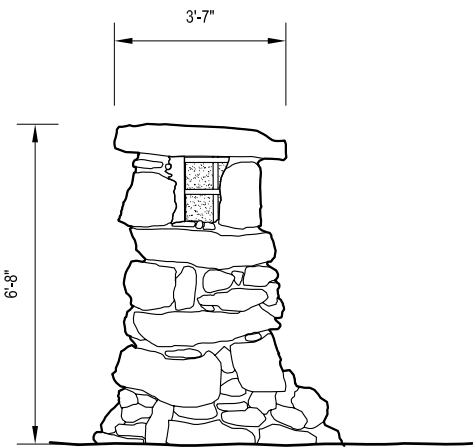
THE UNIVERSITY OF ARIZONA
PRESERVATION STUDIES PROGRAM
COLLEGE OF ARCHITECTURE AND
LANDSCAPE ARCHITECTURE

DECEMBER 2007

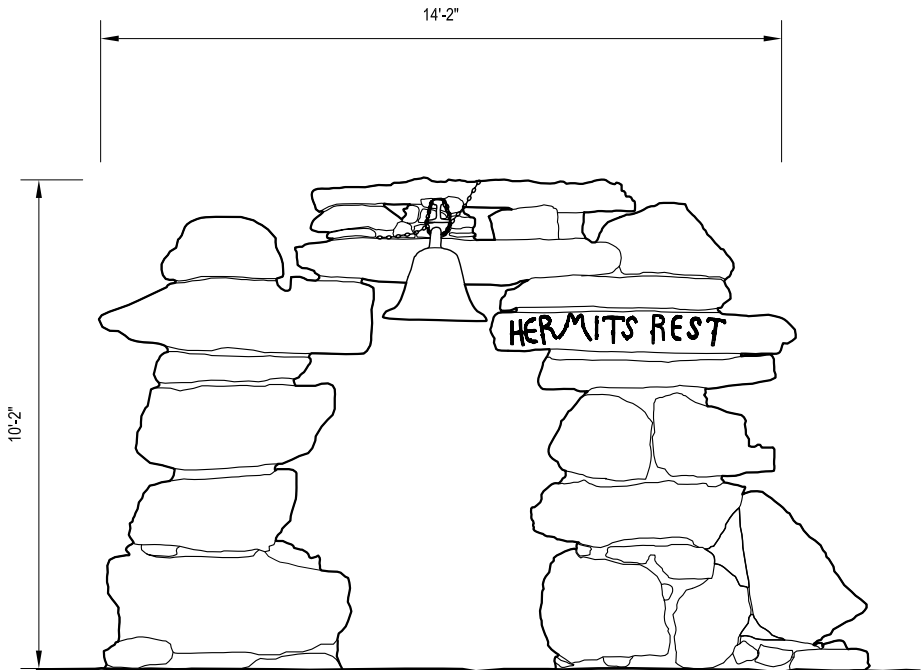
DRAWING
7



OVEN

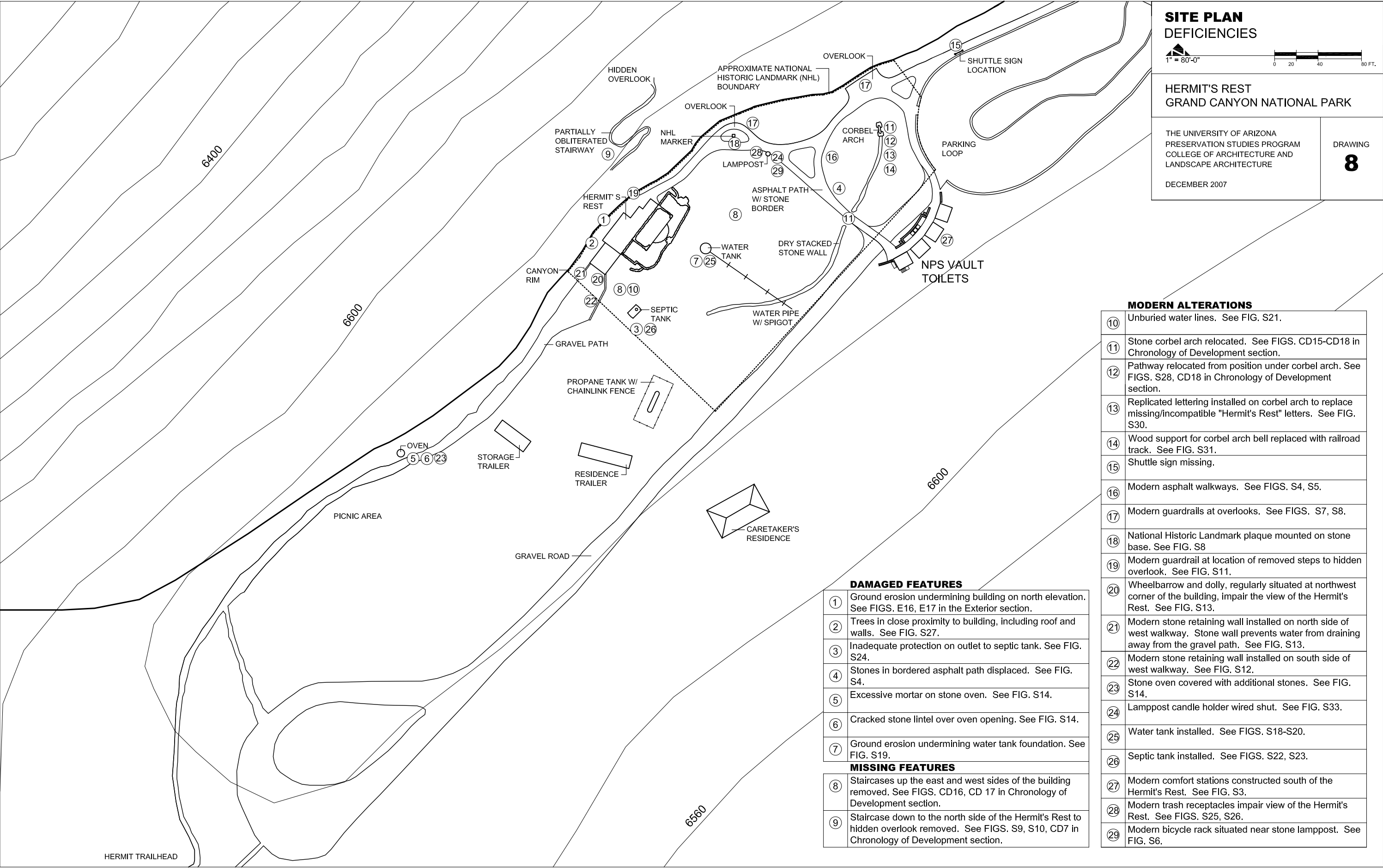


LAMPPOST

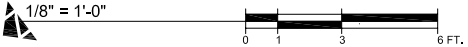


CORBEL ARCH

RENDERING INDICATES THE QUALITY OF INDIVIDUAL STONES, NOT ACTUAL SIZE



ROOF PLAN
DEFICIENCIES

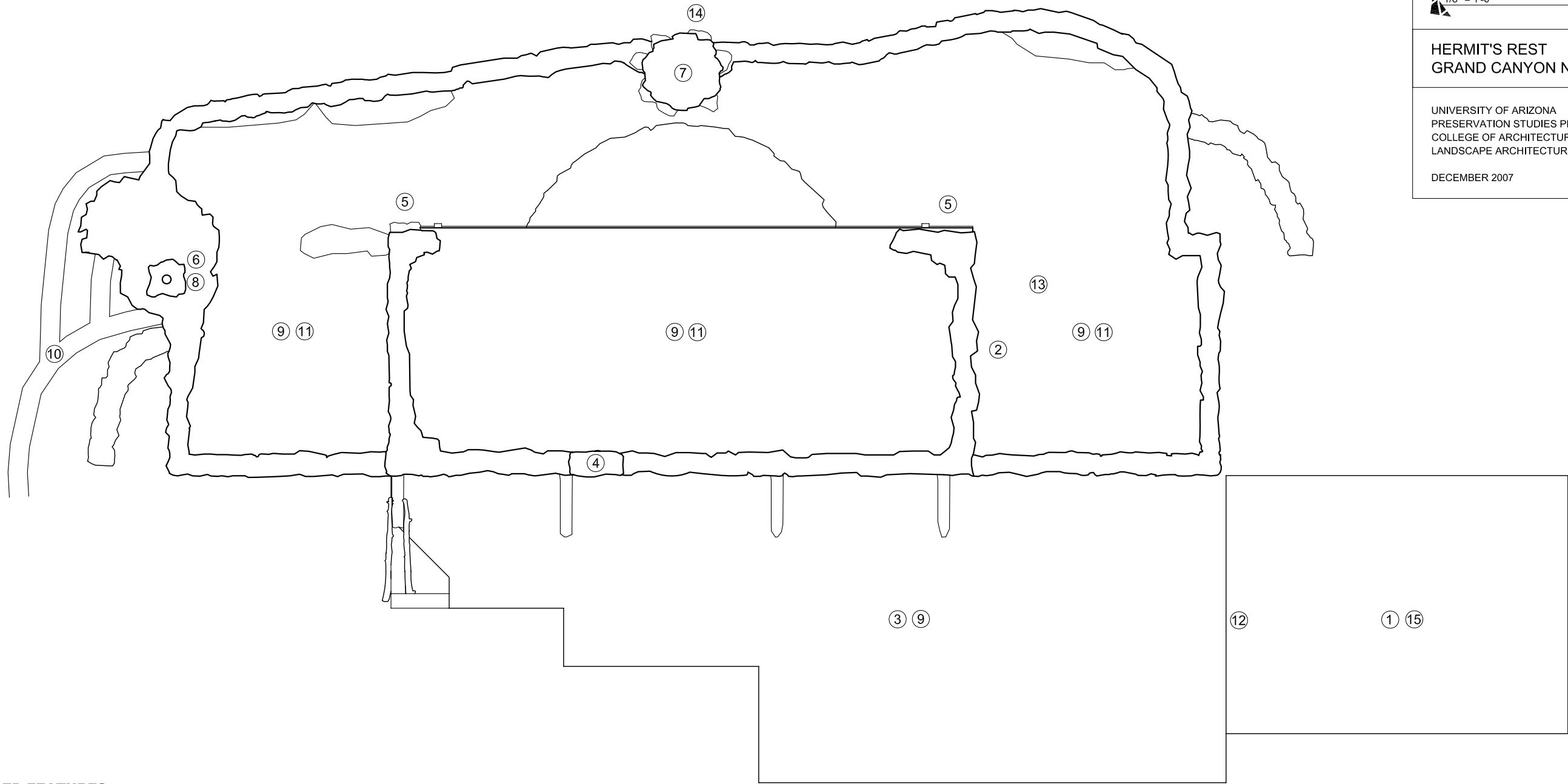


HERMIT'S REST
GRAND CANYON NATIONAL PARK

UNIVERSITY OF ARIZONA
PRESERVATION STUDIES PROGRAM
COLLEGE OF ARCHITECTURE AND
LANDSCAPE ARCHITECTURE

DECEMBER 2007

DRAWING
9



DAMAGED FEATURES

①	Porch addition roof damaged with age. See FIG. E35.
②	Unsecured water pipe and/or electrical conduit, propane supply. See FIGS. E33, E56.
③	Displaced latilla and infill on underside of porch roof exposing board above. See FIG. E21.
④	Mortar applied on top of stone roof lookout with unknown purpose. See FIGS. E12, E13.
⑤	Elastomeric roofing material applied on stone walls. See FIGS. E31, E32.
⑥	Secondary Room chimney missing stones/mortar creating holes. See FIG. E10.
⑦	Lack of animal-proof screen on Great Room chimney (unless present inside chimney). See FIG. E11.
⑧	Unsecured wire mesh over Secondary Room chimney. See FIG. E10.

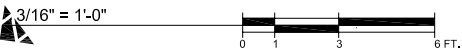
⑨	White elastomeric roof treatment visually distracting and impairs view of the Hermit's Rest. See FIGS. E7, E31.
⑩	Improper drainage channels, unsightly and in poor condition. See FIG. E52.
⑪	Asbestos likely present under top roof coat. See FIGS. E31, E33.
⑫	Displaced gutter on porch addition roof. See FIG. E35.
⑬	Elastomeric roofing material unnecessarily applied over single concrete block situated on roof. See FIG. E33.

MODERN ALTERATIONS

⑭	Some exhaust holes in Great Room chimney blocked to direct smoke. See FIG. E11.
⑮	Porch extended westward. See FIGS. E22, E26, E35, CD2, CD4, CD5, CD21, CD22 in Chronology of Development section.

ORIGINAL PORCH ROOF 1980 ADDITION

PORCH FLOOR
DEFICIENCIES

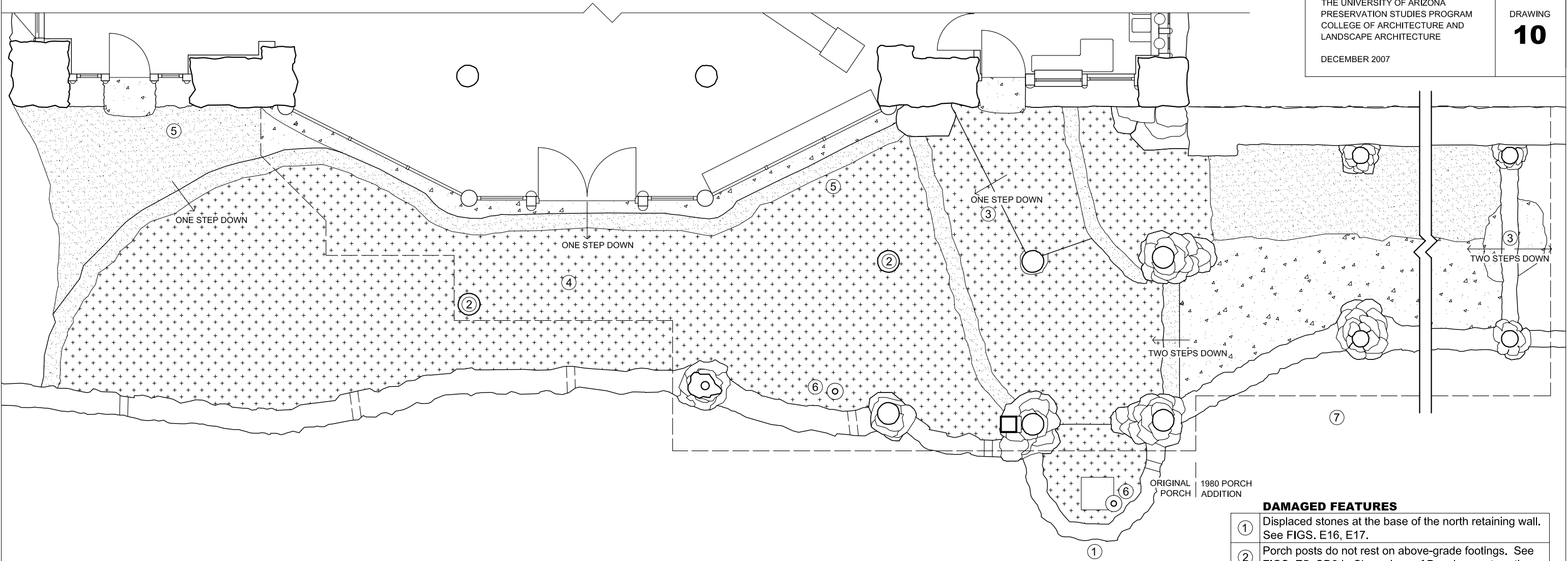


HERMIT'S REST
GRAND CANYON NATIONAL PARK

THE UNIVERSITY OF ARIZONA
PRESERVATION STUDIES PROGRAM
COLLEGE OF ARCHITECTURE AND
LANDSCAPE ARCHITECTURE

DECEMBER 2007

DRAWING
10



PORCH FLOOR MATERIAL SCHEDULE

	STONE
	FLAGSTONE-PATTERNED CONCRETE
	SMOOTH CONCRETE

DAMAGED FEATURES

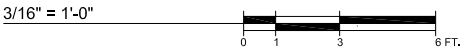
①	Displaced stones at the base of the north retaining wall. See FIGS. E16, E17.
②	Porch posts do not rest on above-grade footings. See FIGS. E5, CD3 in Chronology of Development section.

MODERN ALTERATIONS

③	Yellow painted stripes at level changes visually distracting. See FIGS. E26, E28.
④	Porch floor raised one step on east side. See FIGS. E5, E26, E29, CD3 in Chronology of Development section.
⑤	Modern wood benches placed on porch. See FIG. E29.
⑥	Telescopes mounted on porch floor. See FIG. E45.
⑦	Porch extended westward. See FIGS. E22, E26, E35, CD2, CD4, CD5, CD21, CD22 in Chronology of Development section.
⑥	Modern signage to discourage feeding of wildlife mounted on ground at porch impairs view of the Hermit's Rest. See FIG. E47.

See Elevation Deficiencies for additional porch-related Dam-
aged Features and Modern Alterations.

NORTH ELEVATION
DEFICIENCIES

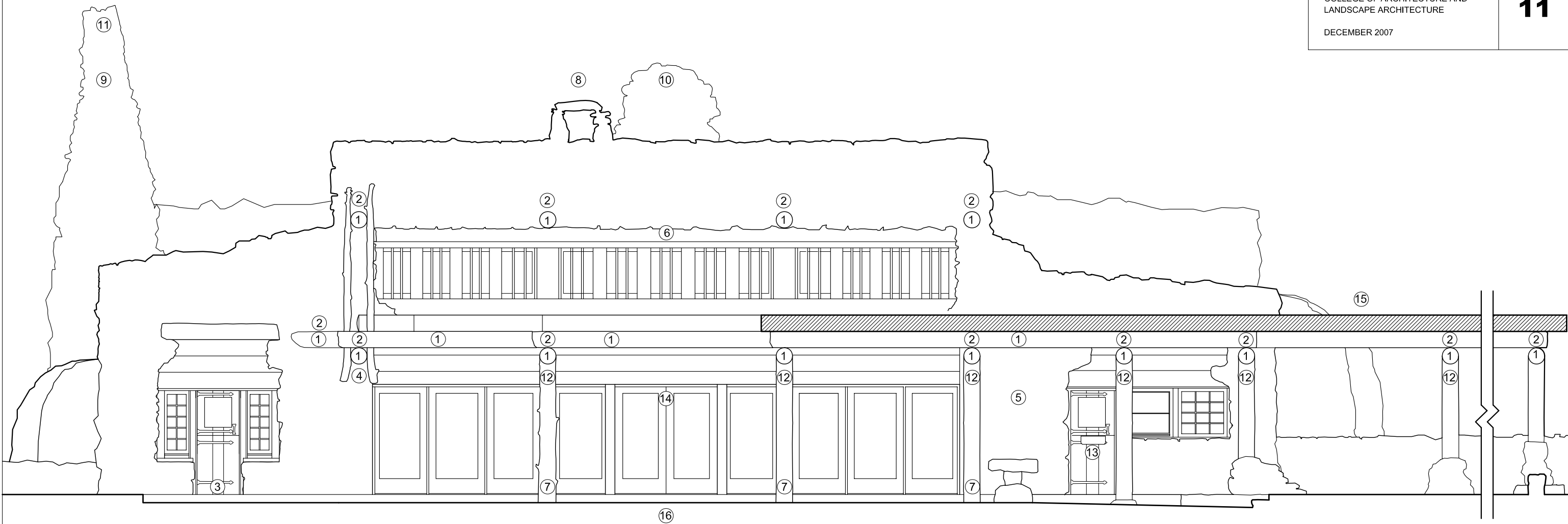


HERMIT'S REST
GRAND CANYON NATIONAL PARK

THE UNIVERSITY OF ARIZONA
PRESERVATION STUDIES PROGRAM
COLLEGE OF ARCHITECTURE AND
LANDSCAPE ARCHITECTURE

DECEMBER 2007

DRAWING
11



DAMAGED FEATURES

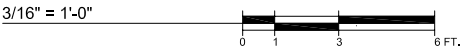
①	Decayed wood members, including vigas and porch beams, caused by moisture. See FIGS. E23, E24, E36.
②	Sheet metal installed over wood vigas and porch beams likely traps moisture. See FIG. E36.
③	Base of Secondary Room door jamb is decayed due to excess moisture. See FIG. E38.
④	Displaced/sagging porch roof beam. See FIGS. E24, E25.
⑤	Paint on stone wall between main entrance and Kitchen. See FIG. E42.
⑥	Paint worn on wood members. See FIGS. E48, E54.

⑦	Porch posts do not rest on above-grade footings. See FIGS. E5, CD3 in Chronology of Development section.
⑧	Mortar applied on top of stone roof lookout with unknown purpose. See FIGS. E12, E13.
⑨	Secondary Room chimney missing stones/mortar creating holes. See FIG. E10.
⑩	Lack of animal-proof screen on Great Room chimney (unless present inside chimney). See FIG. E11.
⑪	Unsecured wire mesh over Secondary Room chimney. See FIG. E10.
⑫	Porch posts and stone bases not anchored. See FIG. E16.

MODERN ALTERATIONS

⑬	Modern shelf installed on Kitchen Dutch door. See FIG. E40.
⑭	National Register of Historic Places plaque detailing building's history mounted above door making it difficult to read. See FIG. E44.
⑮	Porch extended westward. See FIGS. E22, E26, E35, CD2, CD4, CD5, CD21, CD22 in Chronology of Development section.
⑯	Porch floor raised one step on east side. See FIGS. E5, E26, E29, CD3 in Chronology of Development section.

EAST ELEVATION
DEFICIENCIES

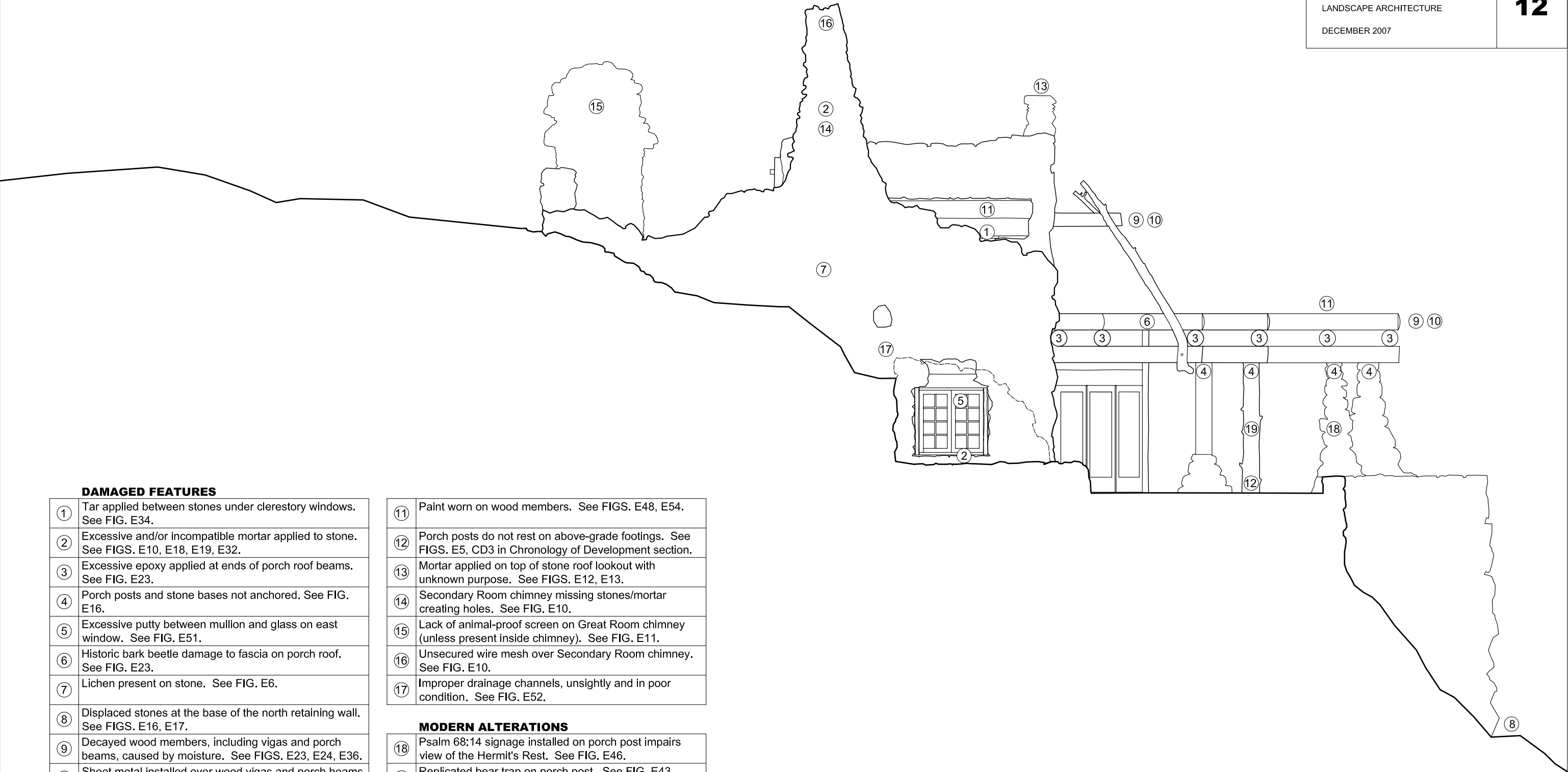


HERMIT'S REST
GRAND CANYON NATIONAL PARK

THE UNIVERSITY OF ARIZONA
PRESERVATION STUDIES PROGRAM
COLLEGE OF ARCHITECTURE AND
LANDSCAPE ARCHITECTURE

DECEMBER 2007

DRAWING
12



DAMAGED FEATURES

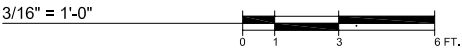
①	Tar applied between stones under clerestory windows. See FIG. E34.
②	Excessive and/or incompatible mortar applied to stone. See FIGS. E10, E18, E19, E32.
③	Excessive epoxy applied at ends of porch roof beams. See FIG. E23.
④	Porch posts and stone bases not anchored. See FIG. E16.
⑤	Excessive putty between mullion and glass on east window. See FIG. E51.
⑥	Historic bark beetle damage to fascia on porch roof. See FIG. E23.
⑦	Lichen present on stone. See FIG. E6.
⑧	Displaced stones at the base of the north retaining wall. See FIGS. E16, E17.
⑨	Decayed wood members, including vigas and porch beams, caused by moisture. See FIGS. E23, E24, E36.
⑩	Sheet metal installed over wood vigas and porch beams likely traps moisture. See FIG. E36.

⑪	Paint worn on wood members. See FIGS. E48, E54.
⑫	Porch posts do not rest on above-grade footings. See FIGS. E5, CD3 in Chronology of Development section.
⑬	Mortar applied on top of stone roof lookout with unknown purpose. See FIGS. E12, E13.
⑭	Secondary Room chimney missing stones/mortar creating holes. See FIG. E10.
⑮	Lack of animal-proof screen on Great Room chimney (unless present inside chimney). See FIG. E11.
⑯	Unsecured wire mesh over Secondary Room chimney. See FIG. E10.
⑰	Improper drainage channels, unsightly and in poor condition. See FIG. E52.

MODERN ALTERATIONS

⑱	Psalm 68:14 signage installed on porch post impairs view of the Hermit's Rest. See FIG. E46.
⑲	Replicated bear trap on porch post. See FIG. E43.

WEST ELEVATION
DEFICIENCIES

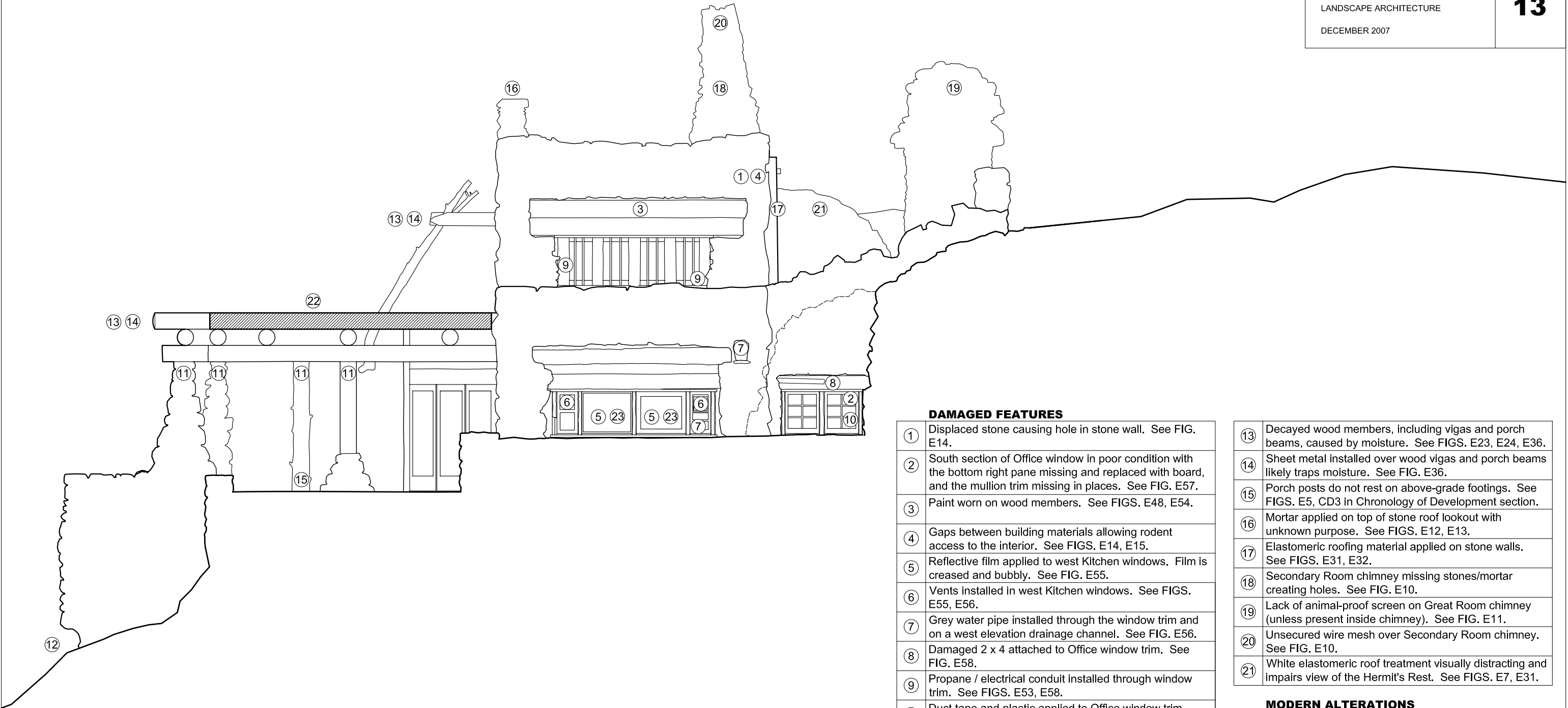


HERMIT'S REST
GRAND CANYON NATIONAL PARK

THE UNIVERSITY OF ARIZONA
PRESERVATION STUDIES PROGRAM
COLLEGE OF ARCHITECTURE AND
LANDSCAPE ARCHITECTURE

DECEMBER 2007

DRAWING
13



DAMAGED FEATURES

①	Displaced stone causing hole in stone wall. See FIG. E14.
②	South section of Office window in poor condition with the bottom right pane missing and replaced with board, and the mullion trim missing in places. See FIG. E57.
③	Paint worn on wood members. See FIGS. E48, E54.
④	Gaps between building materials allowing rodent access to the interior. See FIGS. E14, E15.
⑤	Reflective film applied to west Kitchen windows. Film is creased and bubbly. See FIG. E55.
⑥	Vents installed in west Kitchen windows. See FIGS. E55, E56.
⑦	Grey water pipe installed through the window trim and on a west elevation drainage channel. See FIG. E56.
⑧	Damaged 2 x 4 attached to Office window trim. See FIG. E58.
⑨	Propane / electrical conduit installed through window trim. See FIGS. E53, E58.
⑩	Duct tape and plastic applied to Office window trim. See FIG. E57.
⑪	Porch posts and stone bases not anchored. See FIG. E16.
⑫	Displaced stones at the base of the north retaining wall. See FIGS. E16, E17.

⑬	Decayed wood members, including vigas and porch beams, caused by moisture. See FIGS. E23, E24, E36.
⑭	Sheet metal installed over wood vigas and porch beams likely traps moisture. See FIG. E36.
⑮	Porch posts do not rest on above-grade footings. See FIGS. E5, CD3 in Chronology of Development section.
⑯	Mortar applied on top of stone roof lookout with unknown purpose. See FIGS. E12, E13.
⑰	Elastomeric roofing material applied on stone walls. See FIGS. E31, E32.
⑱	Secondary Room chimney missing stones/mortar creating holes. See FIG. E10.
⑲	Lack of animal-proof screen on Great Room chimney (unless present inside chimney). See FIG. E11.
⑳	Unsecured wire mesh over Secondary Room chimney. See FIG. E10.
㉑	White elastomeric roof treatment visually distracting and impairs view of the Hermit's Rest. See FIGS. E7, E31.

MODERN ALTERATIONS

㉒	Porch extended westward. See FIGS. E22, E26, E35, CD2, CD4, CD5, CD21, CD22 in Chronology of Development section.
㉓	Kitchen window replacements on west elevation. See FIG. E55.

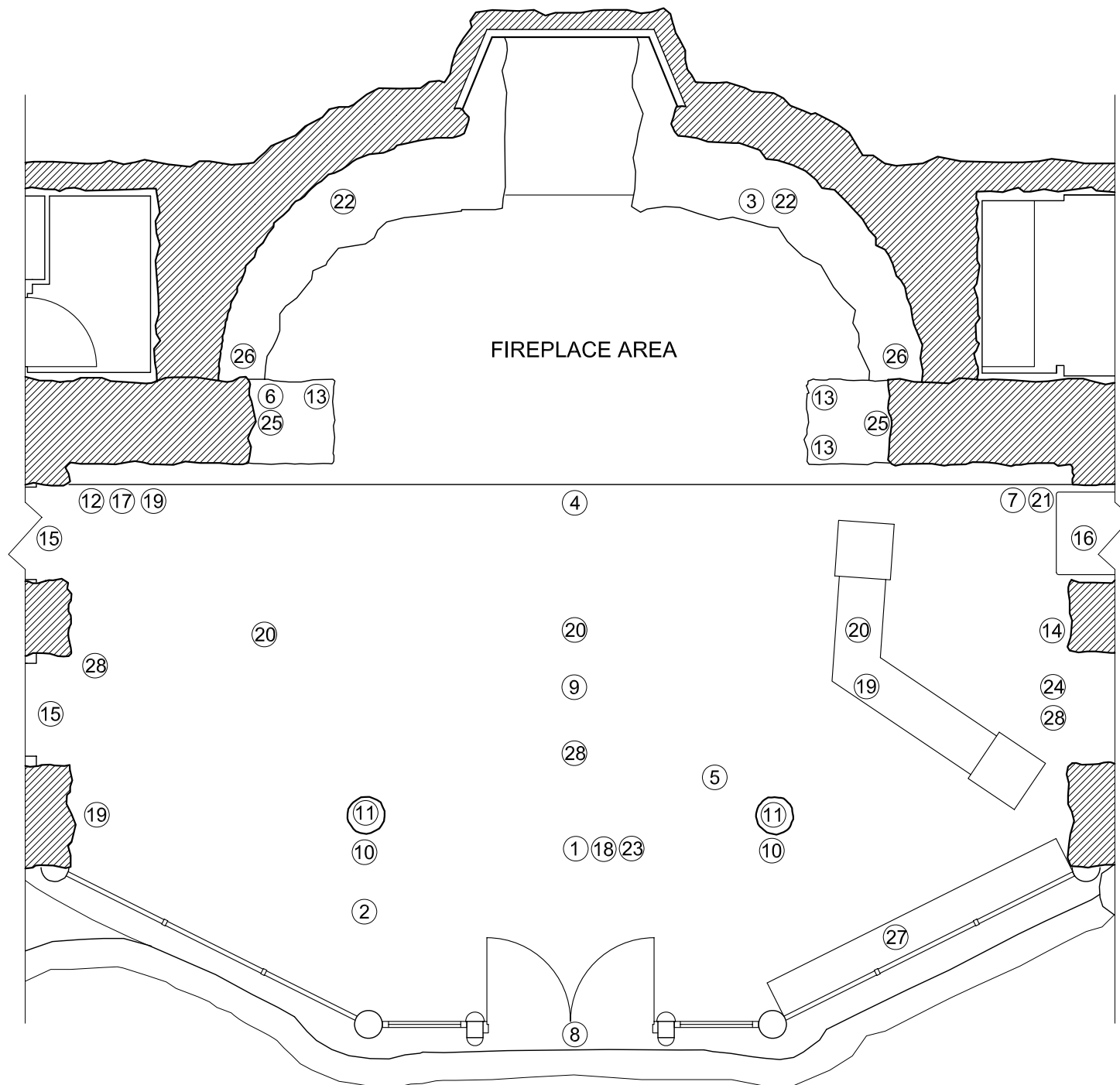
$\frac{3}{16}'' = 1'-0''$

A horizontal line with vertical tick marks at 0, 1, 2, and 4 feet. The segments between 0 and 1, 1 and 2, and 2 and 4 are filled with black and white diagonal hatching.

THE UNIVERSITY OF ARIZONA
PRESERVATION STUDIES PROGRAM
COLLEGE OF ARCHITECTURE AND
LANDSCAPE ARCHITECTURE

DECEMBER 2007

DRAWING



①	Log slab ceiling at entrance damaged by rodents. See FIGS. GR8, GR9.
②	Trash left by rodents visible in ceiling. See FIGS. GR8, GR9.
③	Loose stone on integrated bench. See FIG. GR12.
④	White painted stripe at level change visually distracting. See FIGS. GR1, GR2.
⑤	Table/chair missing seat. See FIG. GR19.
⑥	Incompatible mortar applied on built-in stone bench. See FIG. GR11.
⑦	Electrical conduit and propane pipe installed through window frame. See FIG. E53 in Exterior section.
⑧	Level change from exterior. See FIG. GR1.
⑨	Floor regularly waxed giving it a shiny appearance. See FIGS. GR1-GR4.
⑩	Holes in posts from removed candelabra. See FIG. GR14.
⑪	Decorative paint faded on wood posts. See FIGS. GR13, GR14.

⑫	Rodent access at location of removed propane heater. See FIG. GR7.
⑬	Three iron firewood holders missing. See FIG. GR11.
⑭	Historic light fixture missing shade covering. See FIG. GR26.
⑮	Doors to Secondary Room missing. See FIG. GR4.

⑩	Archway blocked with non-original safe and burlap. See FIGS. GR3, GR16.
⑪	Modern steel C-channel present for removed propane heater in southeast corner. See FIG. GR7.
⑫	Modern log slab ceiling at entrance. See FIGS. GR6, GR8, GR9, CD11, CD12 in Chronology of Development section
⑬	Modern merchandise displays obscure character-defining features. See FIGS. GR3, GR4, GR13.
⑭	Modern ceiling fans with hanging light fixtures. See FIG. GR5.
⑮	Modern propane heater mounted on steel C-channel. See FIG. GR27.
⑯	Candelabras relocated to fireplace wall from posts. See FIGS. GR2, GR14, GR15, CD8 in Chronology of Development section.
⑰	Modern track lighting installed. See FIGS. GR3, GR4, GR6, GR9.
⑱	Modern speakers installed on west wall and cords draped between them. See FIG. GR3.
⑲	Historic lamp fixtures electrified. See FIG. GR24.
⑳	Modern electrical outlets at fireplace. See FIGS. GR24, GR25.
㉑	Modern shelves below west windows and between west windows and Kitchen archway. See FIG. GR28.
㉒	Modern conduit on north, east and west walls. See FIG. GR7.

SECONDARY ROOM
DEFICIENCIES

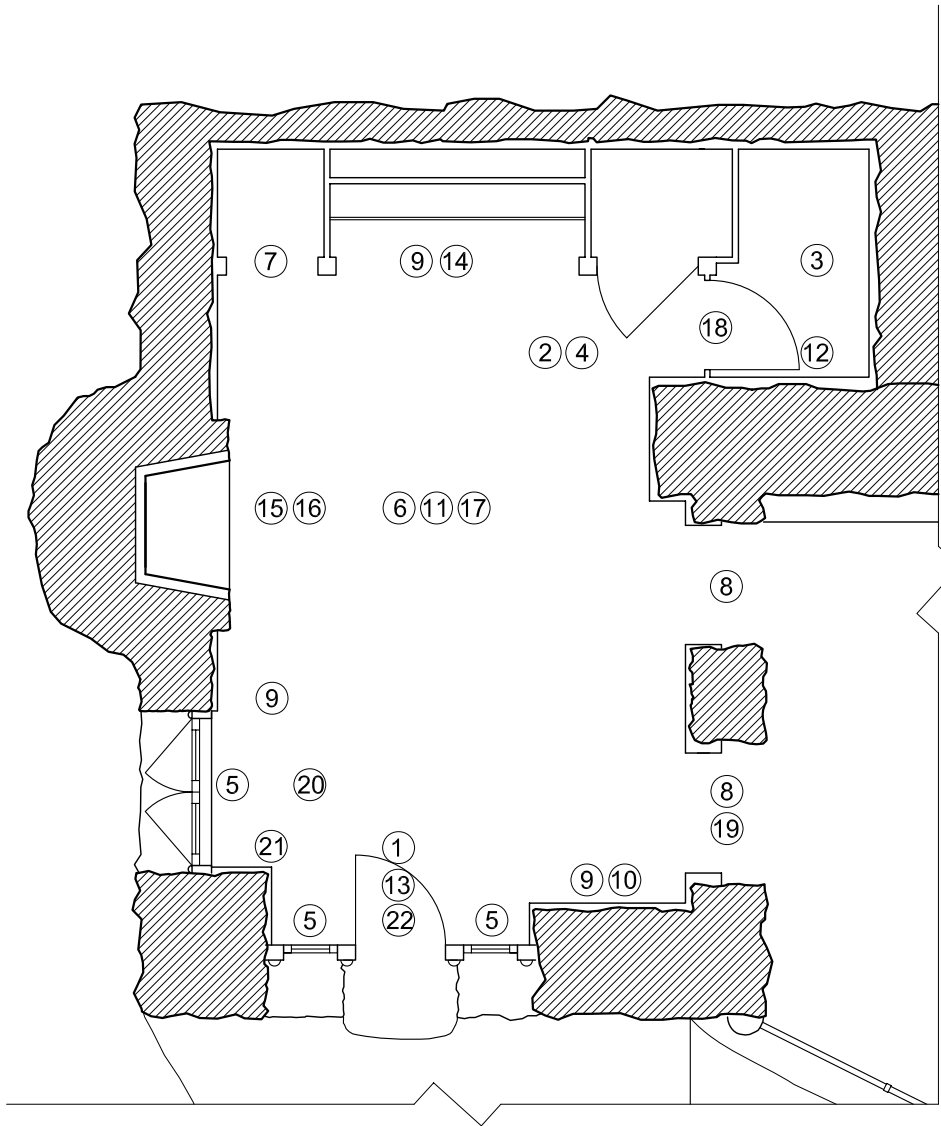


HERMIT'S REST
GRAND CANYON NATIONAL PARK

THE UNIVERSITY OF ARIZONA
PRESERVATION STUDIES PROGRAM
COLLEGE OF ARCHITECTURE AND
LANDSCAPE ARCHITECTURE

DECEMBER 2007

DRAWING
15



DAMAGED FEATURES

①	Exterior door blocked by merchandise. See FIG. SR8.
②	Rodent access gained through gaps between wall boards, ceiling boards, and connections between wall and ceiling. See FIGS. SR13, SR14.
③	Water damage on closet ceiling. See FIG. SR13.
④	Rodent footprints on ceiling logs. See FIG. SR17.
⑤	Daylight blocked by display in windows. See FIGS. SR2, SR8.
⑥	Room temperature is warm in the summer.

MISSING FEATURES

⑦	Closet door missing. (Located in storage trailer) See FIG. SR5.
⑧	Doors to Great Room missing. See FIGS. SR9, SR10.

MODERN ALTERATIONS

⑨	Modern merchandise displays. See FIGS. SR2, SR3, SR5, SR8, SR20.
⑩	Slat board installed on north wall. See FIG. SR8.

⑪	Carpet installed over concrete floor. See FIGS. SR11, SR12.
⑫	Missing battens in closet. See FIG. SR18.
⑬	White board on ceiling near north door. See FIG. SR19.
⑭	False wall installed on south wall for display. See FIG. SR3.
⑮	Stone fireplace reconfigured. See FIGS. SR1, CD13 in Chronology of Development section.
⑯	Fireplace plugged.
⑰	Modern track light fixtures installed. See FIGS. SR2, SR17.
⑱	Reversed door to west wall closet. See FIG. SR7.
⑲	Modern trim over north arch on west wall. See FIG. SR10.
⑳	Modern battens where original battens missing. See FIG. SR15.
㉑	Security camera installed in northwest corner with cord draped across north wall. See FIG. SR16.
㉒	Modern dutch door. See FIG. SR19.

KITCHEN, OFFICE & HALL
DEFICIENCIES

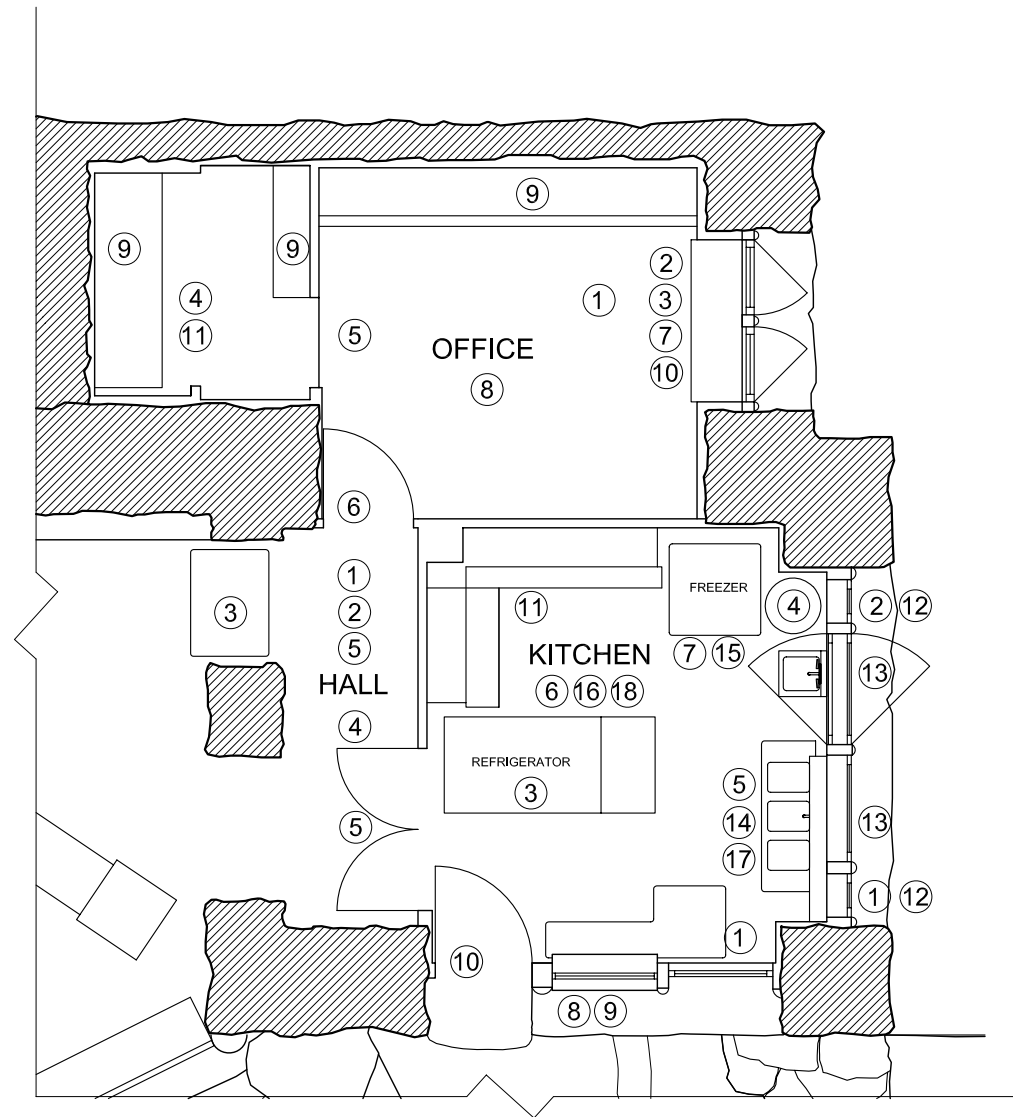
3/16" = 1'-0"

HERMIT'S REST
GRAND CANYON NATIONAL PARK

THE UNIVERSITY OF ARIZONA
PRESERVATION STUDIES PROGRAM
COLLEGE OF ARCHITECTURE AND
LANDSCAPE ARCHITECTURE

DECEMBER 2007

DRAWING
16



KITCHEN

DAMAGED FEATURES

- ① Daylight blocked by food storage and display in windows. See FIGS. K1, K12.
- ② Septic pipe installed through window frame. See FIG. K10.
- ③ Loud refrigerator impairs employee hearing. See FIG. K4.
- ④ Inefficient hot water for coffee and tea machines. See FIG. K9.
- ⑤ Frequent clogging and overflowing of sink. See FIG. K11.

MISSING FEATURES

- ⑥ Original sink, wall treatments and most cabinets removed. See FIG. CD14 in Chronology of Development section.

MODERN ALTERATIONS

- ⑦ Oven wiring interferes with access to corner fire extinguisher. See FIG. K9.
- ⑧ Modern counter installed under north window. See FIG. K2.
- ⑨ Replaced wood window with aluminum on north wall. See FIG. K2.
- ⑩ Replaced Dutch door window with aluminum-framed window. See FIG. K3.
- ⑪ Modern cabinets, counters and backsplashes. See FIGS. K5, K6.
- ⑫ Exhaust fans and louvered vents installed in side windows on west wall. See FIGS. K10, K12.
- ⑬ Window covered with improperly adhered reflective film. See FIG. K12.
- ⑭ Modern shelves installed in front of sink window. See FIG. K12.
- ⑮ Wall configuration modified by removal of original pantry. See FIG. CD14 in Chronology of Development section and original drawings in Appendix B.
- ⑯ Vinyl tile installed over concrete floor. See FIG. K4.
- ⑰ Window replacements on west wall. See FIG. K12.
- ⑱ Modern fluorescent ceiling fixtures.

OFFICE

DAMAGED FEATURES

- ① Water damage on ceiling. See FIG. O8.
- ② Rodent access gained through gaps between wall boards. See FIG. O9.
- ③ Electrical conduit installed through window frame. See FIG. O2.
- ④ Lead-based paint present in Office closet. See FIG. O10.

MISSING FEATURES

- ⑤ Closet door missing. See FIG. O1.
- ⑥ Office door missing part of wood latch. See FIG. O6.

MODERN ALTERATIONS

- ⑦ Security wire installed over window. See FIG. O2.
- ⑧ Modern fluorescent lighting installed on ceiling. See FIG. O1.
- ⑨ Modern shelving installed in Office and closet for merchandise storage. See FIGS. O2-O5.
- ⑩ Baseboard heater installed on west wall. See FIG. O2.
- ⑪ Partition wall removed and original toilet room and storage area combined into single closet. See FIG. O10.

HALL

DAMAGED FEATURES

- ① Water damage on ceiling. See FIG. H4.

MODERN ALTERATIONS

- ② Exposed wiring haphazardly mounted. See FIGS. H2, H4, H6, H7.
- ③ Archway to Great Room blocked with safe and burlap. See FIG. GR16 in Great Room section.
- ④ Partition wall removed. See FIG. H1.
- ⑤ Modern fluorescent ceiling fixtures. See FIGS. H3, H4.