



PEDESTRIAN WALKWAY ALONG DREXEL AVE.
Large unused rights-of-way along Drexel Avenue provide spacious accommodations for a separate use path with plantings of shade trees and vegetation. Drexel becomes more attractive, benefiting businesses and residents along the street and neighbors have an inviting, safe walking and bicycle route.



STREET ENHANCEMENTS ON 12TH AVE.
12th Avenue is a harsh, hot street loaded with local businesses serving area residents. Street trees provide inviting shade for pedestrians and businesses benefit from beautification of the business corridor.



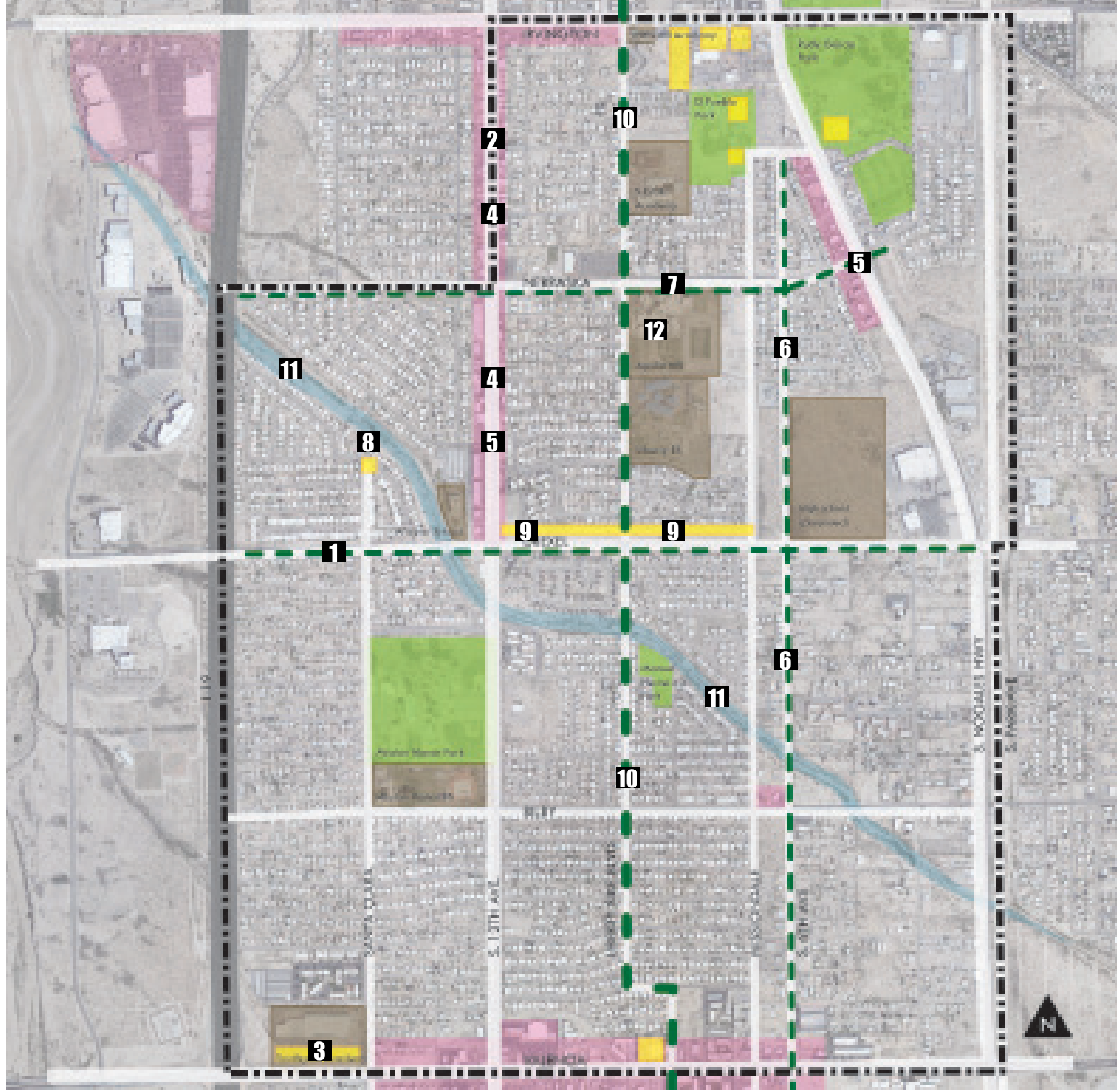
SKATE PARK AT SOUTHGATE ACADEMY
Southgate Academy has a vast unused asphalt parking lot and no playground or outdoor facilities for students. A skatepark is just one way to activate the corner, creating a vibrant community amenity for area youth.



STREET ENHANCEMENTS ON NEBRASKA
Nebraska is an extra-wide street (44') with narrow and cluttered back of curb areas for walking. By removing 4' of asphalt and replacing it with water-harvesting street trees, pedestrians are afforded a buffered, shaded walking route and bicyclists benefit from newly-painted bike lanes. Walking and biking to school becomes pleasant and inviting.



SUNNYSIDE NEIGHBORHOOD



PROPOSED IMPROVEMENTS

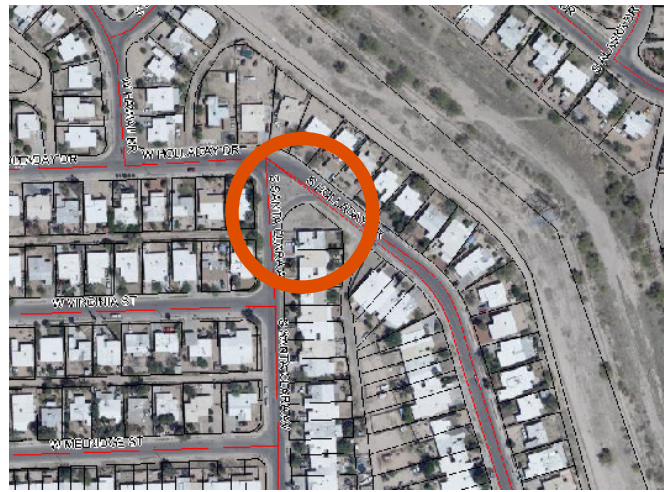
NOVEMBER 15, 2010



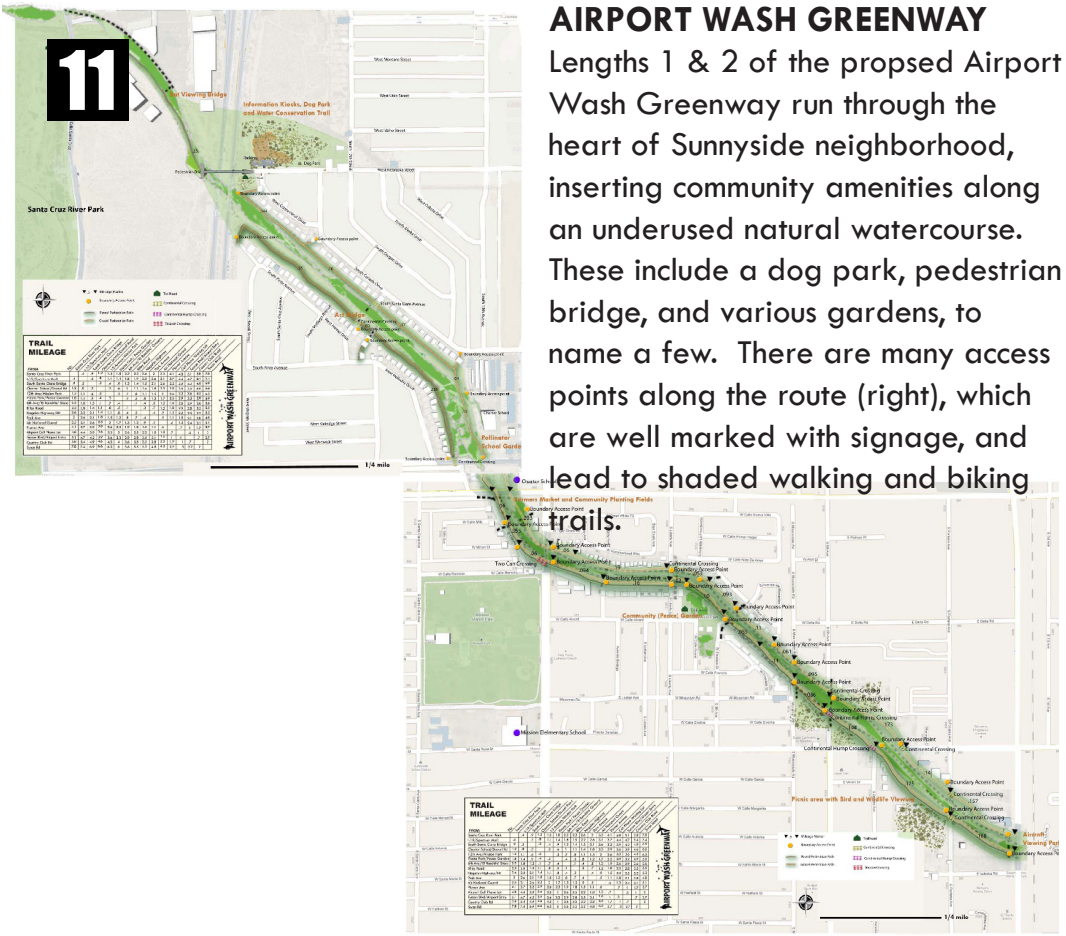
LINEAR PARK ALONG NORTH SIDE OF DREXEL
This barren powerline corridor could better serve the neighborhood with any of several new uses: a dog park, an exercise circuit, a mountain bike trail. These relatively low-maintenance looped desert trails can serve a variety of users within walking distance to the entire neighborhood.



LIBERTY BIKE BOULEVARD
Liberty Bike Boulevard will connect to Los Reales Road on the south and to 8th Avenue and South Tucson and downtown on the north. This continuous bicycle route allows bicyclists to use the traffic lane. Traffic controls such as landscaped traffic circles and added signage discourage automobile through-traffic and prioritize bike traffic. Safety enhancements and automobile reductions encourage inexperienced riders to get on their bikes for fun and transportation.



"STREET PARK" AT HOLLADAY & SANTA CLARA STREETS
Unused and unsightly pavement becomes a useful neighborhood amenity, a water-harvesting "street park".



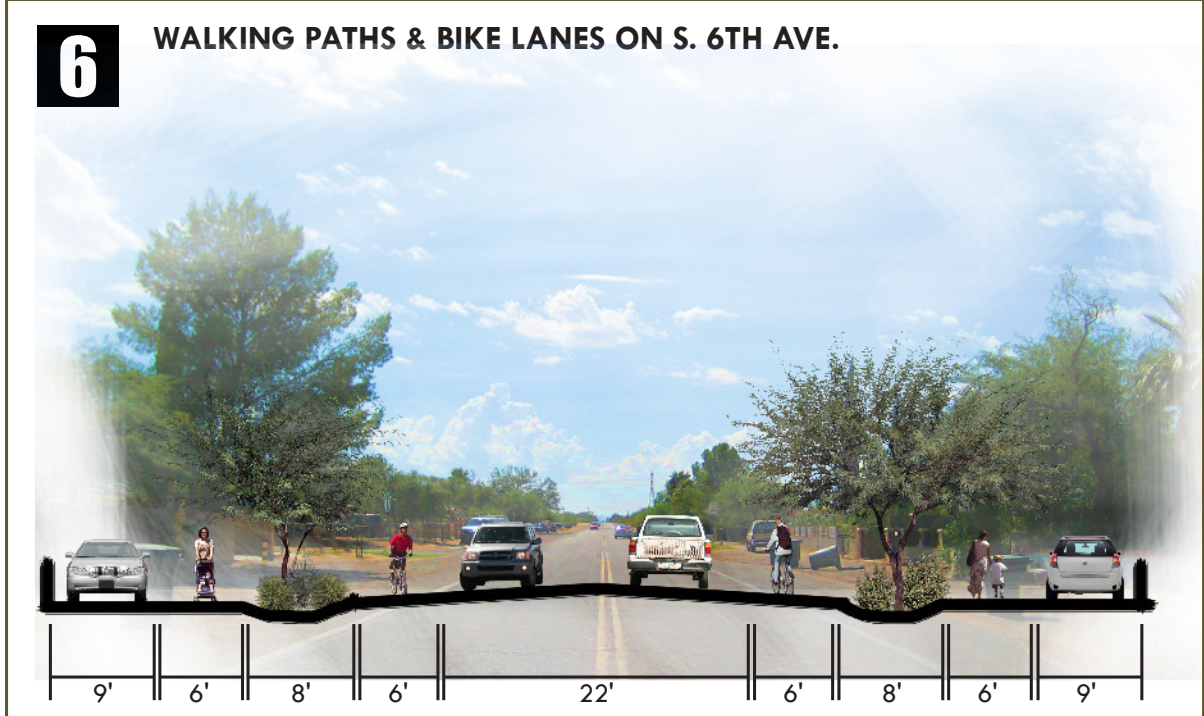
Strategies for Linkages, Access & Urban Wildlife Opportunities for Southern Tucson's Underserved Community Along Airport Wash Greenway, Erik Borish



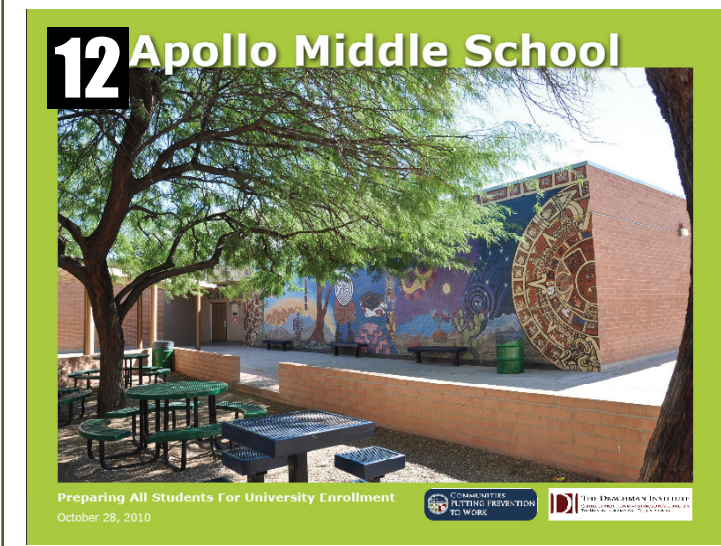
ENHANCED BUS SHELTERS
Shaded bus shelters are added at unimproved bus stops to encourage use and improve transit experience.



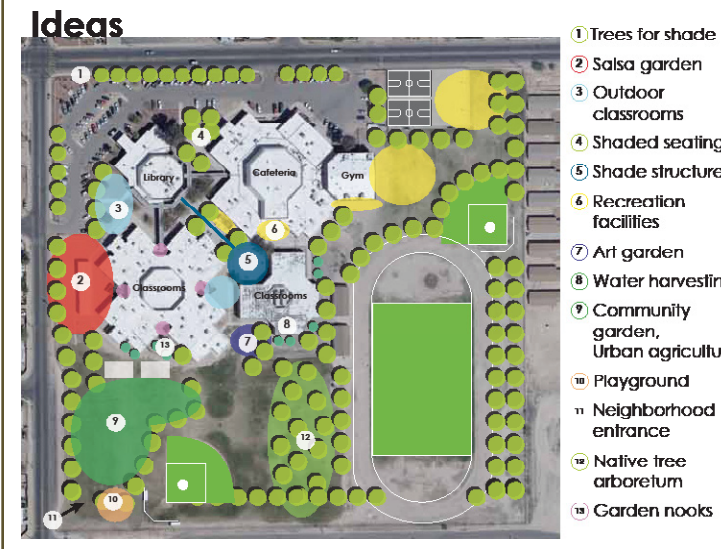
PEDESTRIAN ACTIVATED CROSSINGS
to create safe routes to schools:
(1) At 12th Avenue & Canada
(2) at South Nogales Hwy & Nebraska



COMMUNITY IMPROVEMENTS AT APOLLO MIDDLE SCHOOL



10 Playground
• A joint use agreement will allow parents to have a place to bring children to play.
11 Neighborhood entrance
• Possible neighborhood entrance near playground.



Joint use between TUSD and City of Tucson keeps school grounds open for the neighborhood.

