

# Barrio Anita Memorial Park

## *Arts for the Cure*



Prepared by:  
 S. Blessing Hancock, School of Landscape Architecture  
 Sara Herr, School of Landscape Architecture  
 College of Architecture and Landscape Architecture,  
 University of Arizona

Under Advisement of:  
 Corky Poster  
 Director, Drachman Institute)  
 College of Architecture and Landscape Architecture,  
 University of Arizona

Prepared for:  
 Barrio Anita Neighborhood Association

Funded By:  
 Cooperative Extension

10/2005



**The Drachman Institute**  
 College of Architecture and Landscape Architecture  
 UNIVERSITY OF ARIZONA







# The Drachman Institute

College of Architecture and Landscape Architecture

UNIVERSITY OF ARIZONA

## MISSION STATEMENT

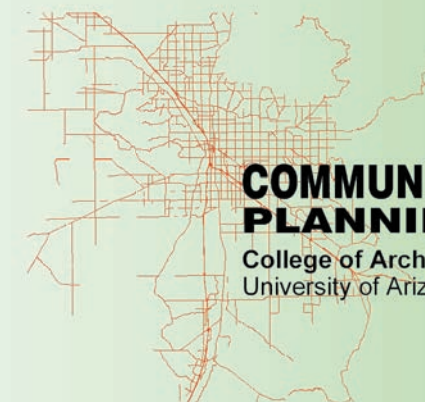
The Drachman Institute is the research and public service unit of the College of Architecture and Landscape Architecture at the University of Arizona dedicated to environmentally sensitive and resource-conscious development of neighborhoods and communities. The Drachman Institute focuses its research and outreach activities on the proposition that housing is the building block of neighborhoods and neighborhoods are the building blocks of communities. The work of the Drachman Institute therefore targets the development of demographically diverse neighborhoods, rich in environmental amenities and built from good-quality, well-designed, regionally-appropriate housing that conserves land, energy, and water. It is our contention that good quality and innovative architectural design and technology, sensible community planning, and a landscape architecture that fosters beautiful and healthy private and public space is the cornerstone of this work. We engage our students, our staff, our faculty, and our citizens in a collaborative, research-based outreach enterprise to make our communities healthier, safer, more equitable and more beautiful places to live.

## COMMUNITY OUTREACH PARTNERSHIP PLANNING AND DESIGN CENTER

The Community Planning and Design Workshop (CPDW) has functioned as a public service/community outreach arm of the Drachman Institute since 1999. It brings the skills and knowledge of the students, faculty, and staff of the College to communities in need throughout Arizona. CPDW accomplishes this by applying its expertise and knowledge in architecture, planning, landscape architecture, and urban design to community service and outreach projects. CPDW accepts projects requested by Arizona communities and various organizations with funding from the Drachman endowment and the College of Agriculture and Life Science's Cooperative Extension or by special contract.

## COOPERATIVE EXTENSION

Cooperative Extension, the outreach arm of The University of Arizona, is "taking the university to the people." Extension serves as a statewide network of knowledgeable faculty and staff that provides lifelong educational programs for all Arizonans. Cooperative Extension is a nationwide educational network of scientists and educators who help people solve problems and put knowledge to use. Arizona Cooperative Extension provides a link between the university and the citizens of this state. Cooperative Extension is a statewide, nonformal, education network bringing research-based information into communities to help people improve their lives. For 85 years Cooperative Extension has delivered educational programs to the people of Arizona. The efforts of the Cooperative Extension are made possible by a cooperative effort between the Federal Government, the University of Arizona's College of Agriculture and Life Sciences and each of the counties we serve.



**COMMUNITY OUTREACH PARTNERSHIP  
PLANNING AND DESIGN CENTER**

College of Architecture and Landscape Architecture  
University of Arizona





# *Table of Contents*

*Introduction*

*Contextual Analysis*

*Site Analysis*

*Users, Activities, Benefits and Goals*

*Alternative Concepts*

*Final Master Plan*

*Barrio Anita Memorial Park*  
*Arts for the Cure*



# *Barrio Anita Memorial Park*

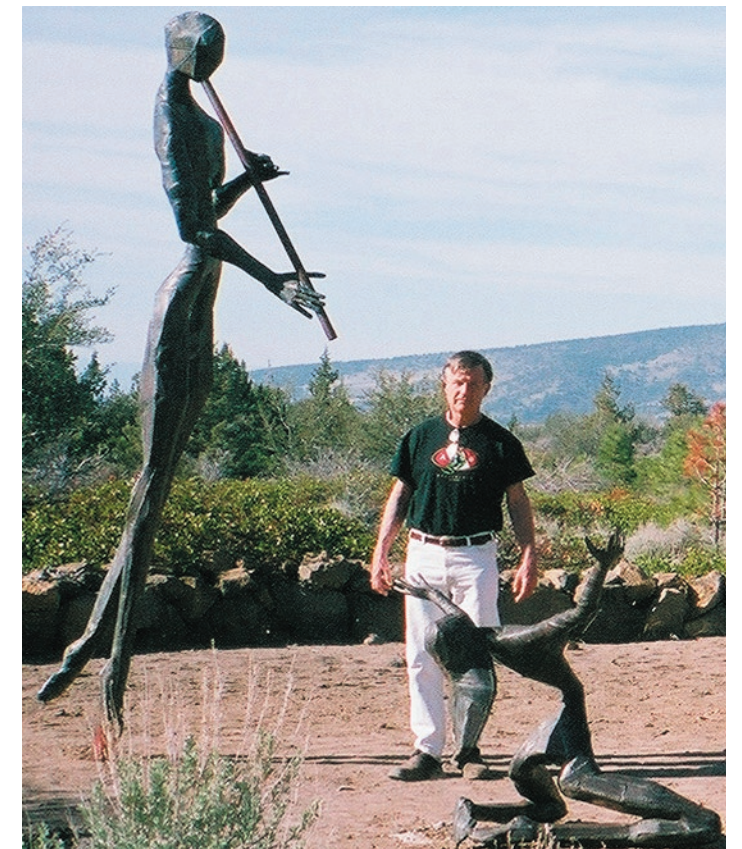
will feature several large sculptures created by one or several local Tucson arts. These sculptures will represent specific organizations dedicated to fighting disease.

These sculptures will serve as memorial tributes to patients, survivors and those lost to illness, as well as fund-raising elements for participating foundations.

Visitors can show their support by purchasing an emblem (a piece of tile, glass, metal for instance) that will then be engraved with the name of a loved one and added to the sculpture of their choice. The money will go directly to that foundation.



Memorial Park Site at the Corner of Granada and St. Mary's





# *The Drachman Institute*

is responsible for designing the park that the memorial sculptures will inhabit.

Our purpose is to create an environment that will accommodate the unique nature of each cause, while responding to the context of Barrio Anita.

The resulting landscape will express common goals among organizations working to find a cure, as well as represent the goals of the Barrio Anita community.



# *Introduction*



*Barrio Anita Memorial Park*  
*Arts for the Cure*



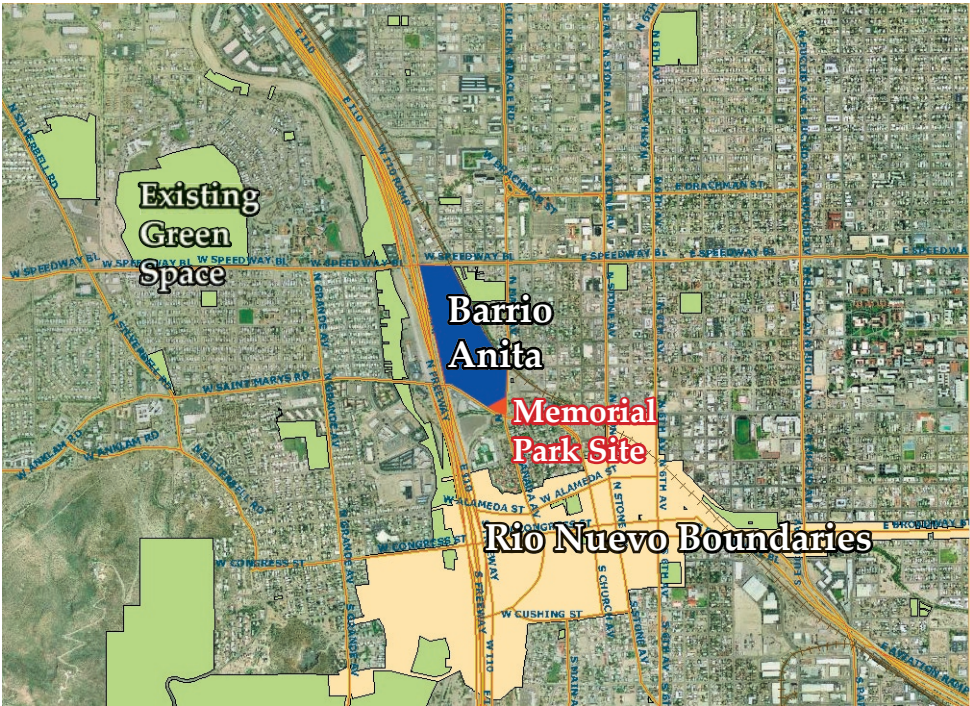
# The City of Tucson

Barrio Anita is centrally located within the Tucson basin, in close proximity to Downtown, Historic neighborhoods and the Rio Nuevo Development Boundaries.

This highly visible location has the potential to draw many visitors to Barrio Anita Memorial Park, an amenity that is unique within the surrounding context.

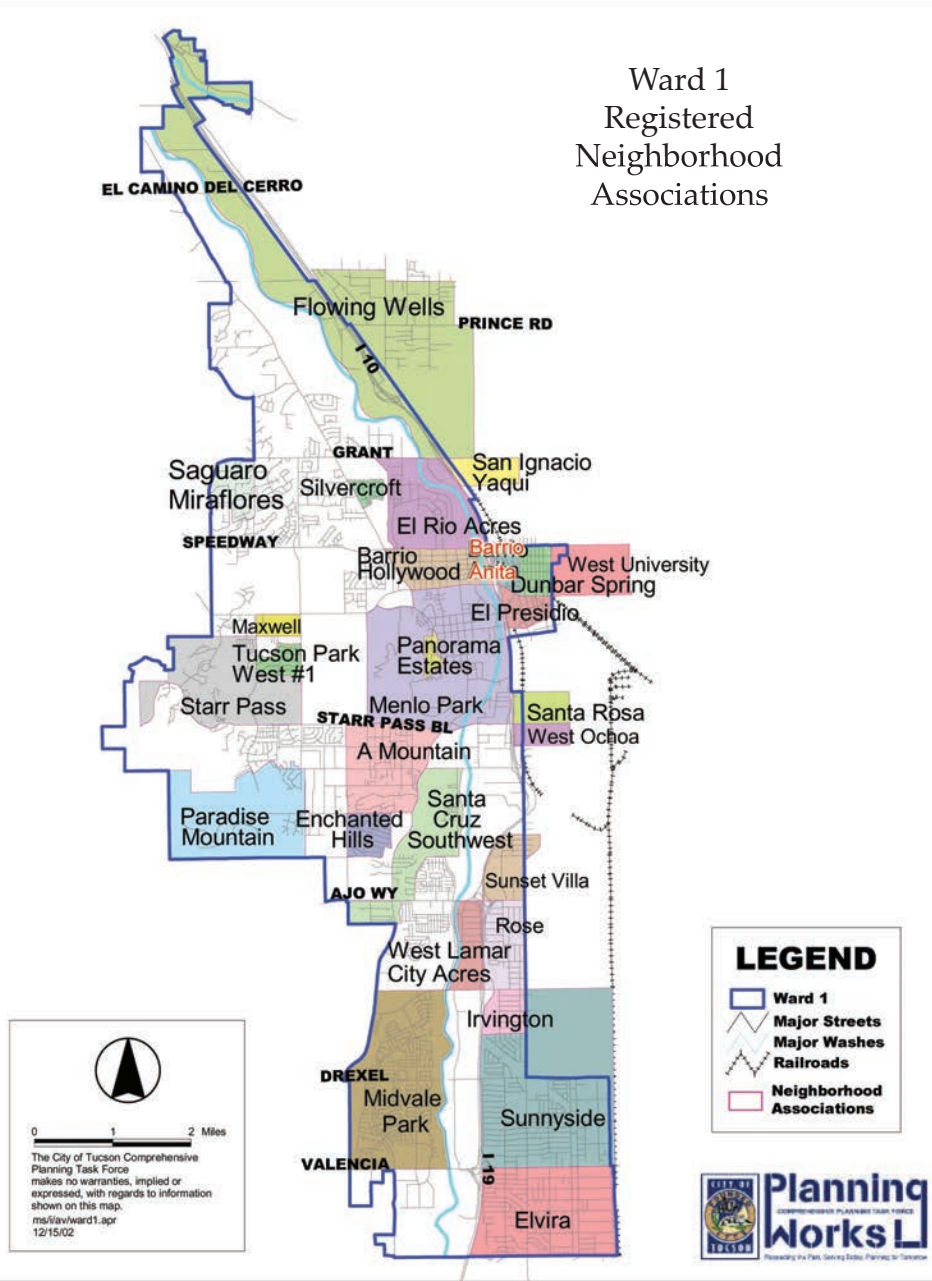


City of Tucson



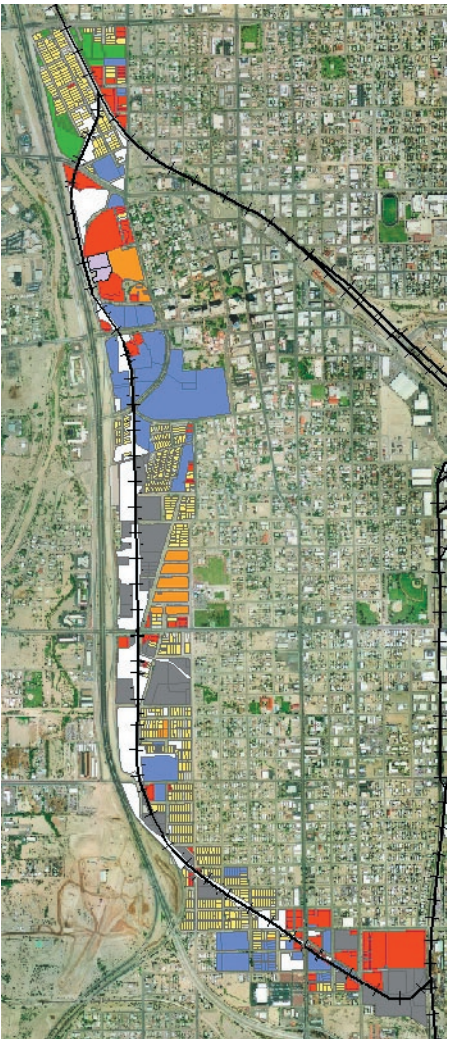
Rio Nuevo and Parks

## Surrounding Neighborhoods



**Contextual Objective:**  
Barrio Anita Memorial Park will link existing and proposed green space within surrounding neighborhoods and strengthen ties to Rio Nuevo and Downtown.

## Green Space Connections (Existing and Proposed)



Proposed El Paso and Southwestern Greenway Master Plan



Proposed El Paso and Southwestern Greenway Barrio Anita Connection



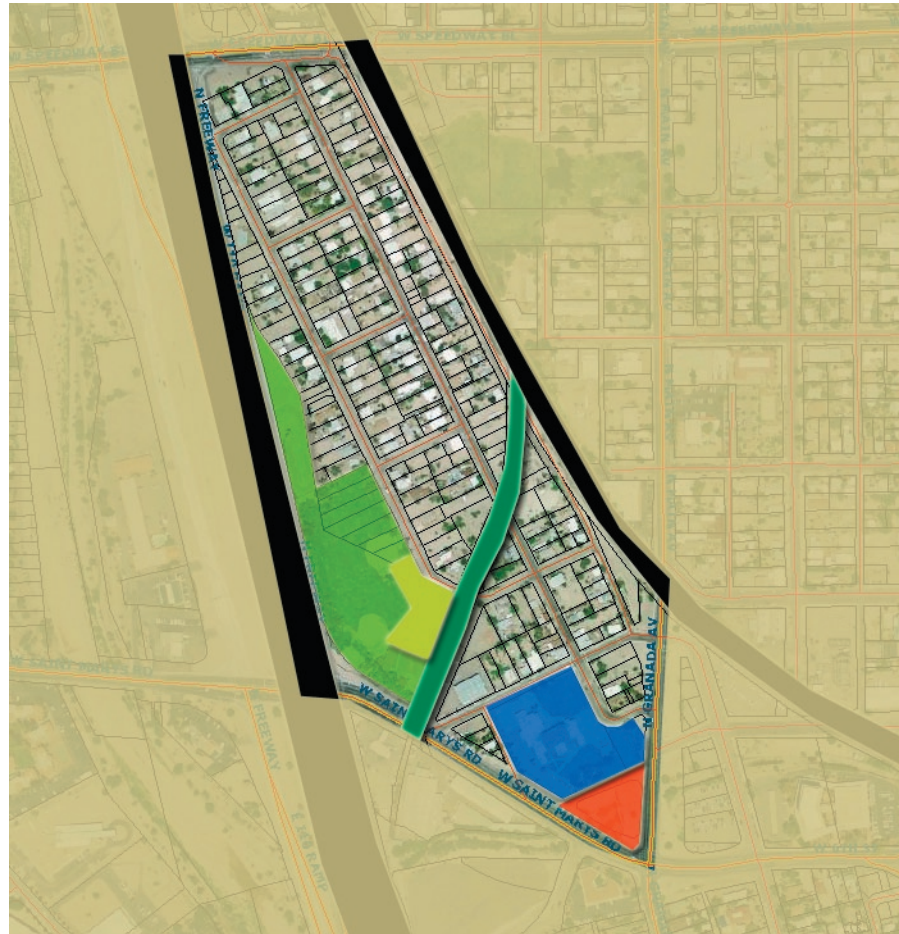
Existing Santa Cruz River Park





# Barrio Anita Neighborhood

As one of Tucson's earliest neighborhoods, Barrio Anita is rich with tradition, culture and a strong sense of community.



## I-10 and Train Tracks

Noise from vehicular and train traffic will be addressed using dampening techniques such as water elements and solid walls.

## Proposed El Paso Greenway

Future plans for a greenway within Barrio Anita will increase accessibility to the memorial park and connect it with the greater park system.

## Oury Park, Freeway Linear Park and Community Center

Barrio Anita is fortunate to contain several valued parks and a highly utilized community center. Design of a Memorial Park within Barrio Anita will distinguish itself from existing parks and community amenities, offering a unique experience for residents.

## Davis Bilingual Magnet School

Tucson's last remaining bilingual elementary school; Davis is dedicated to education and community outreach. Students and teachers work to bring together residents and promote Barrio Anita's history through school projects. Design of a Memorial Park adjacent to Davis School will encourage creative interaction and education opportunities for students, while endorsing bilingual learning

# Contextual Analysis



## Design Implications

1. Utilize Barrio Anita Aesthetic in Art, Architecture and Landscape
2. Use of English and Spanish Text
3. Area for Creative Interaction/Education
4. Offer Unique Layout and Amenities Not Present in Barrio Anita
5. Increase Contextual Connectivity

## Neighborhood Objective:

Design of a Memorial Park within Barrio Anita will reflect on the values and diversity of Anita residents while highlighting the unique character of the neighborhood



Barrio Anita Memorial Park  
*Arts for the Cure*



Existing  
Conditions



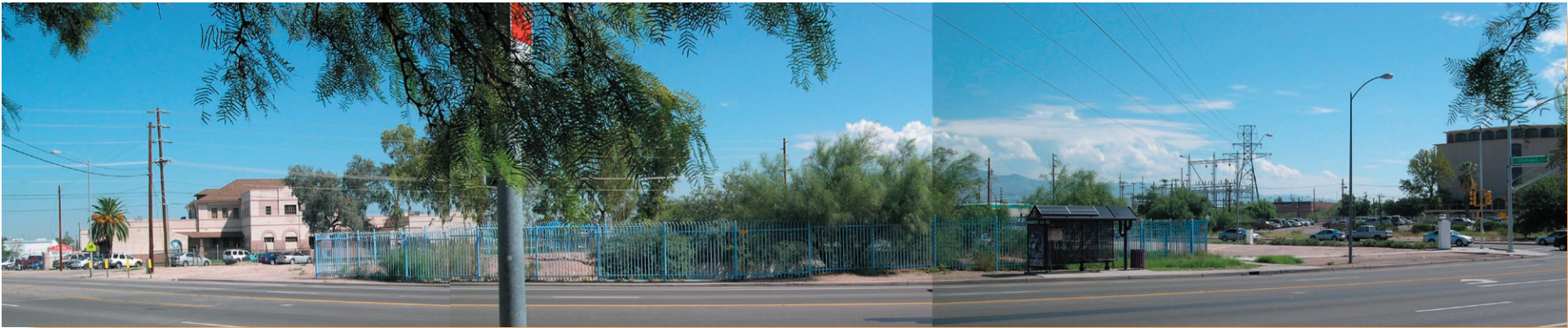
Davis School Parking Lot      Memorial Park Access Point      St. Mary's

*View of Vehicular Access Point Off St. Mary's*



Corner Visibility    Drainage Basin    Memorial Park    Davis School

*View Across Granada Towards Memorial Park*



Access Point      Drainage Basin      Corner Visibility

*View Across St. Mary's Towards Memorial Park*



Fence Around Drainage Basin



# Barrio Anita Memorial Park Site

A key location within Barrio Anita and one that says “Here We Are” to the larger Tucson Community.



High Profile Corner of St. Mary's and Granada

# Site Analysis

**LOT SIZE:** Just under 1 acre

**ACCESS:** A vehicular entry point exists adjacent to the entry to Davis School parking lot, this will allow Davis dual use of parking area.

**THE DRAINAGE BASIN:** Occupies approx. 1/4 of the proposed site and will affect the general layout of the park.

**SIDEWALKS:** Surround the site providing easy pedestrian access. The interior sidewalk will need to be redesigned

**CORNER VISIBILITY:** The corner of St. Mary's and Granada will be a focal point that draws attention to the park This is a good location for signage promoting the neighborhood park

Barrio Anita Memorial Park  
*Arts for the Cure*



# Memorial Park Users

- \* Residents
- \* Davis School Students
- \* Larger Community



# Activities Within the Memorial Park

- \* Social Events
- \* Fund-raisers
- \* Relaxation





# Benefits for Barrio Anita

- \* Improvement of Site Appearance
- \* Exposure for Barrio Anita
- \* Revitalization and Reinvestment
- \* Educational Opportunities
- \* Activities and Events
- \* A Unique Experience within Tucson



# Promoting Common Goals

- \* Advocacy
- \* Research
- \* Outreach
- \* Prevention
- \* Education



# Users Activities Benefits and Goals



Barrio Anita Memorial Park  
*Arts for the Cure*







# Alternative Concepts

## The Plaza



Formal Grove



View Axis



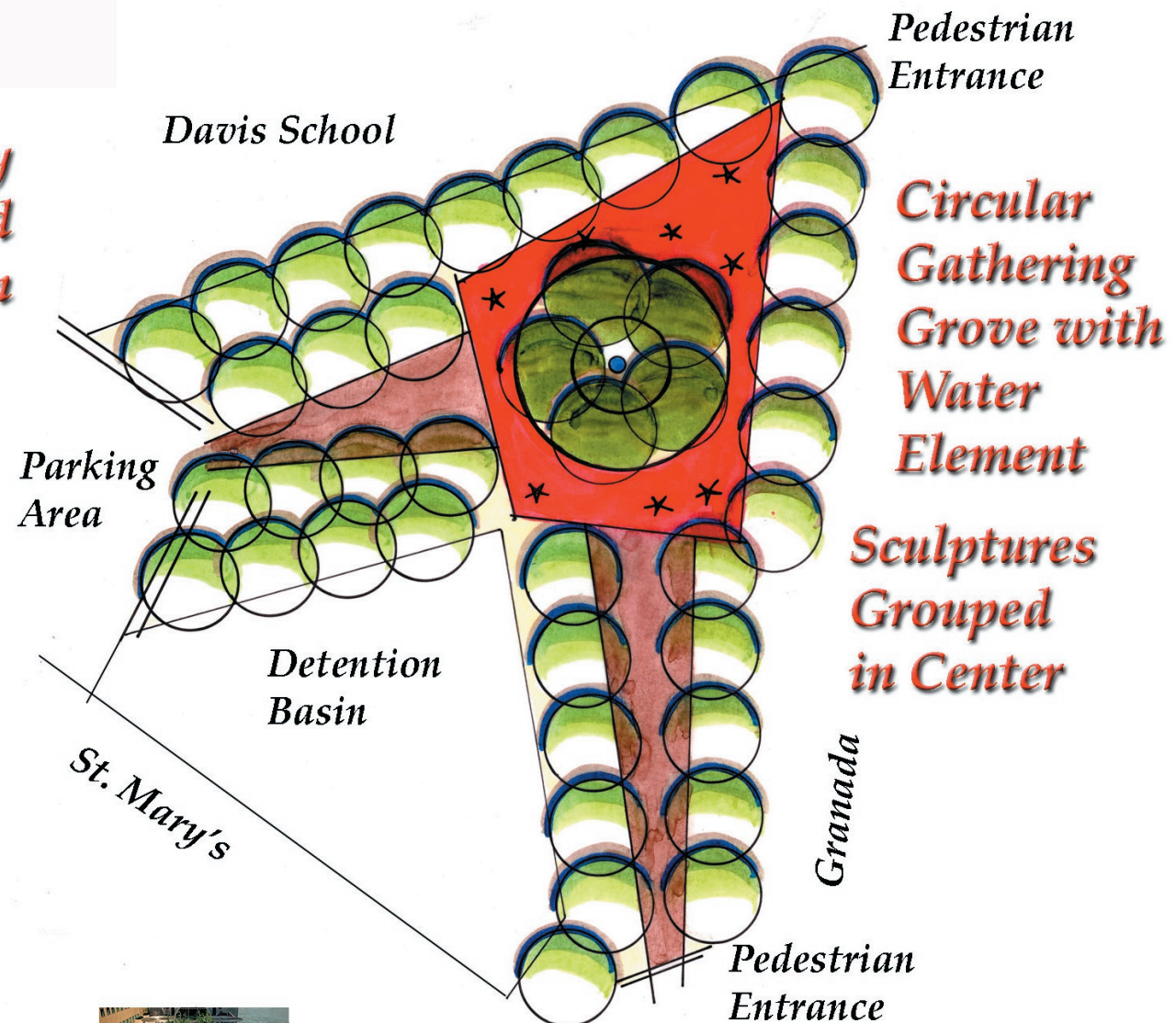
Water Feature



Hardscape

Formally  
Planted  
Vegetation

Two  
Major  
Axis



Barrio Anita Memorial Park  
*Arts for the Cure*



# The Combo



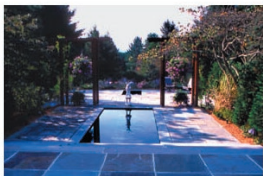
Formal Grove



Native Vegetation



Planted Berms



Water Feature

*Formal and  
Informal  
Vegetation*

*Planted  
Berms*

*Davis School*

*Parking  
Area*

*Detention  
Basin*

*St. Mary's*

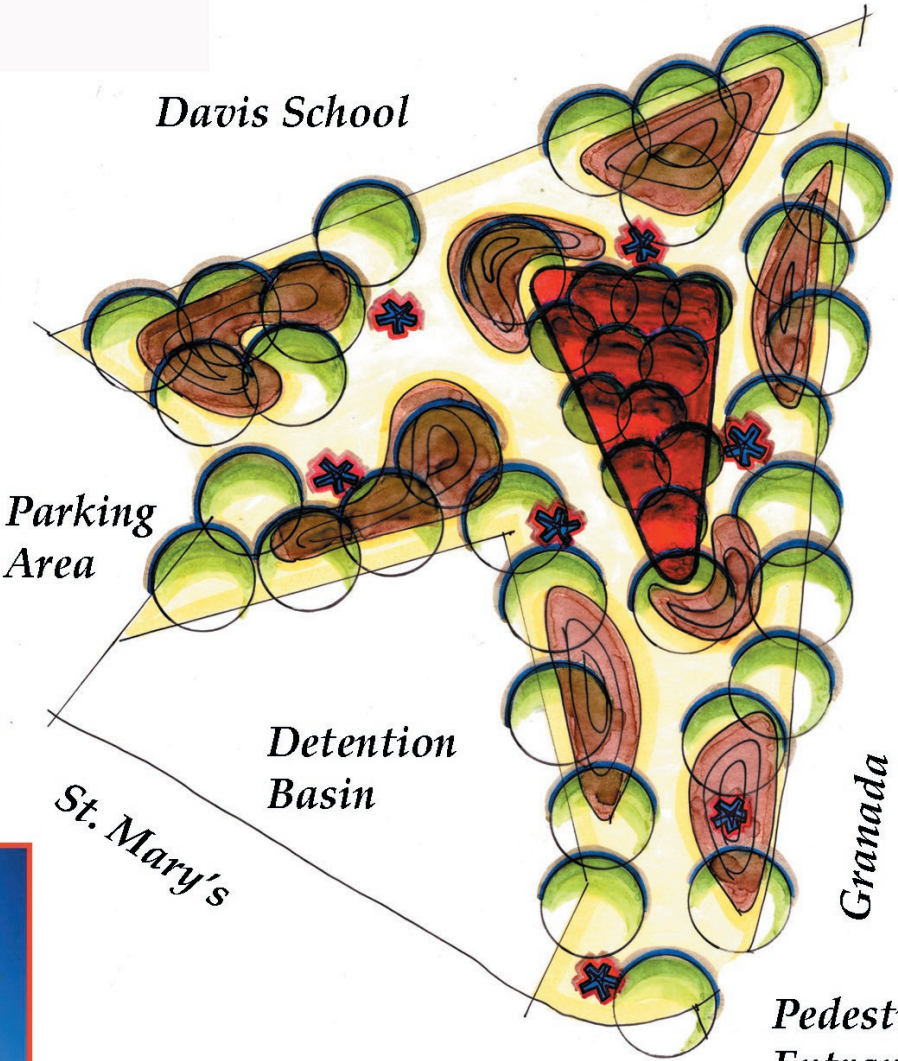
*Pedestrian  
Entrance*

*Formal  
Gathering  
Grove with  
Water  
Element*

*Sculptures  
Spaced  
Throughout*

*Granada*

*Pedestrian  
Entrance*





# Alternative Concepts

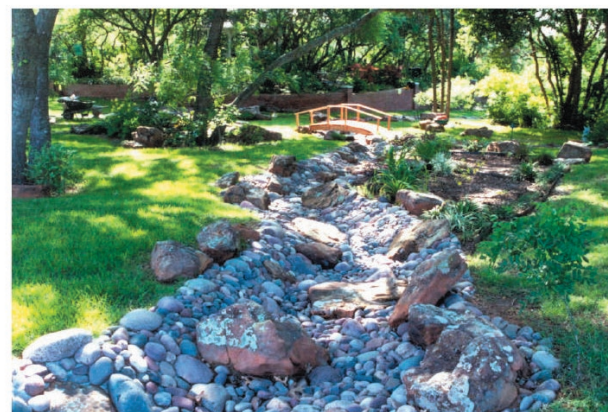
## The Park



Planted Berms

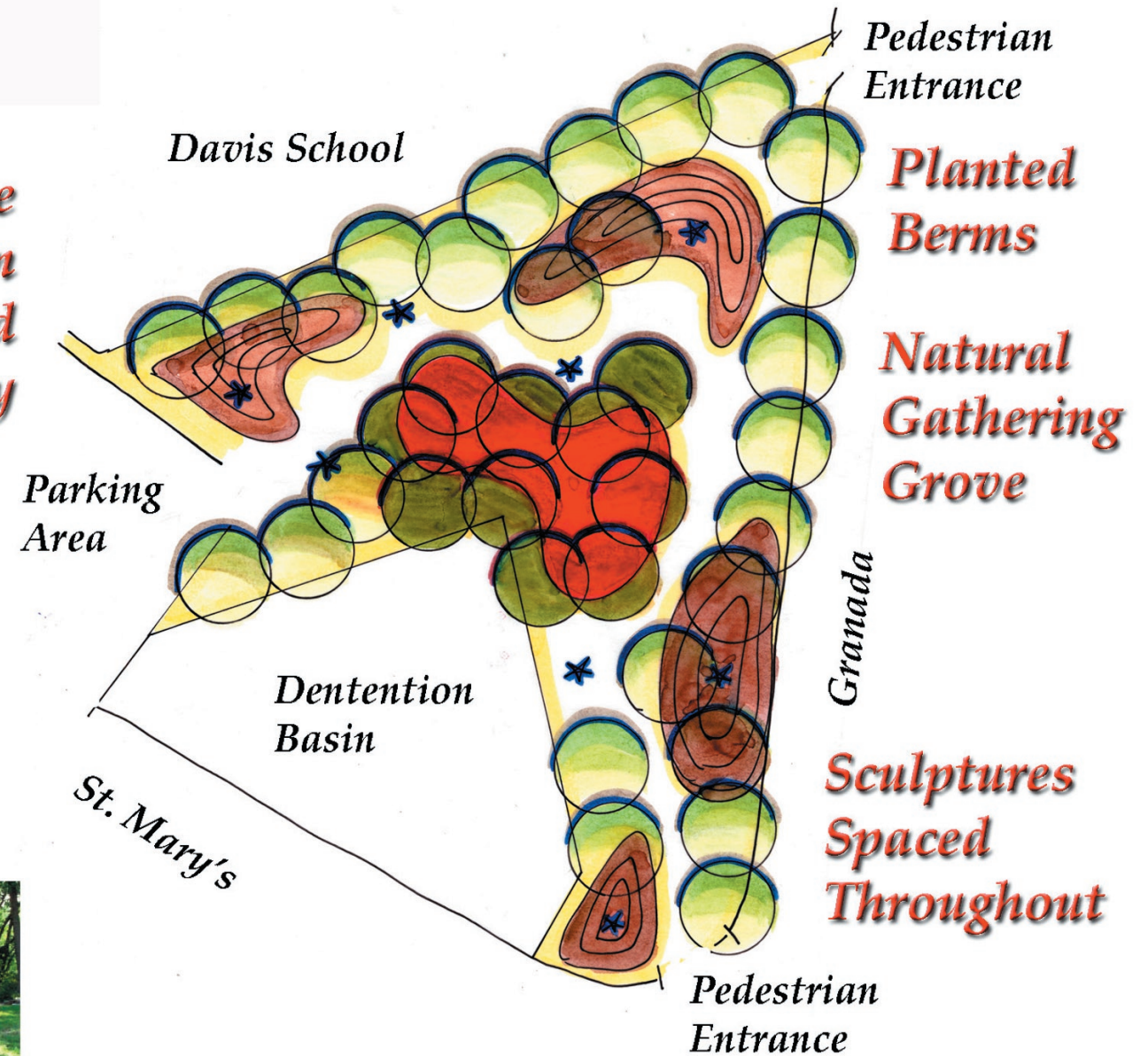


Native Vegetation



Seasonal Water Element

*Native Type  
Vegetation  
Spaced  
Irregularly*



*Barrio Anita Memorial Park*  
*Arts for the Cure*





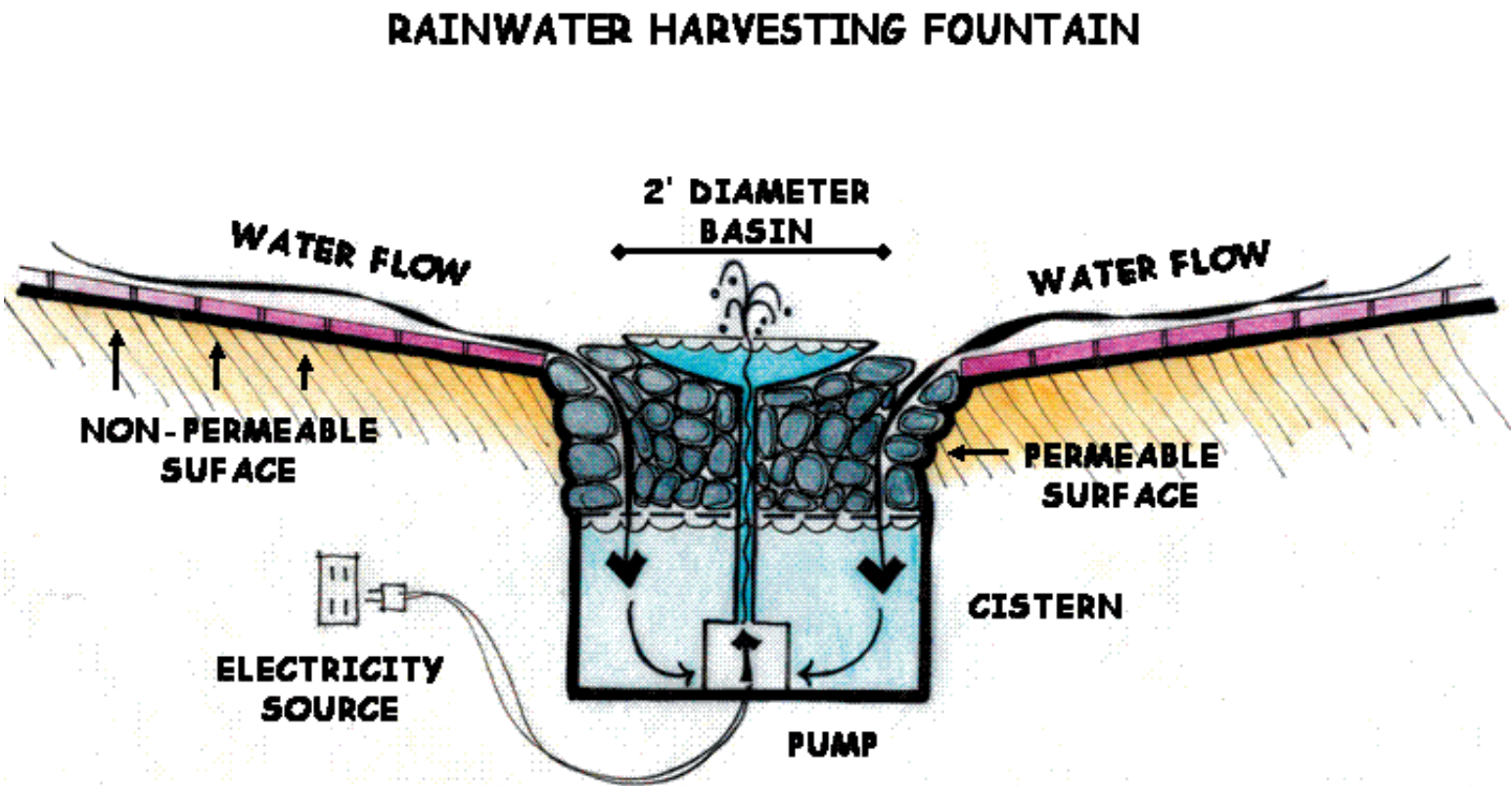
Central Gathering Area with Palo Verde Grove and Water Feature



Memorial Park within Neighborhood Context

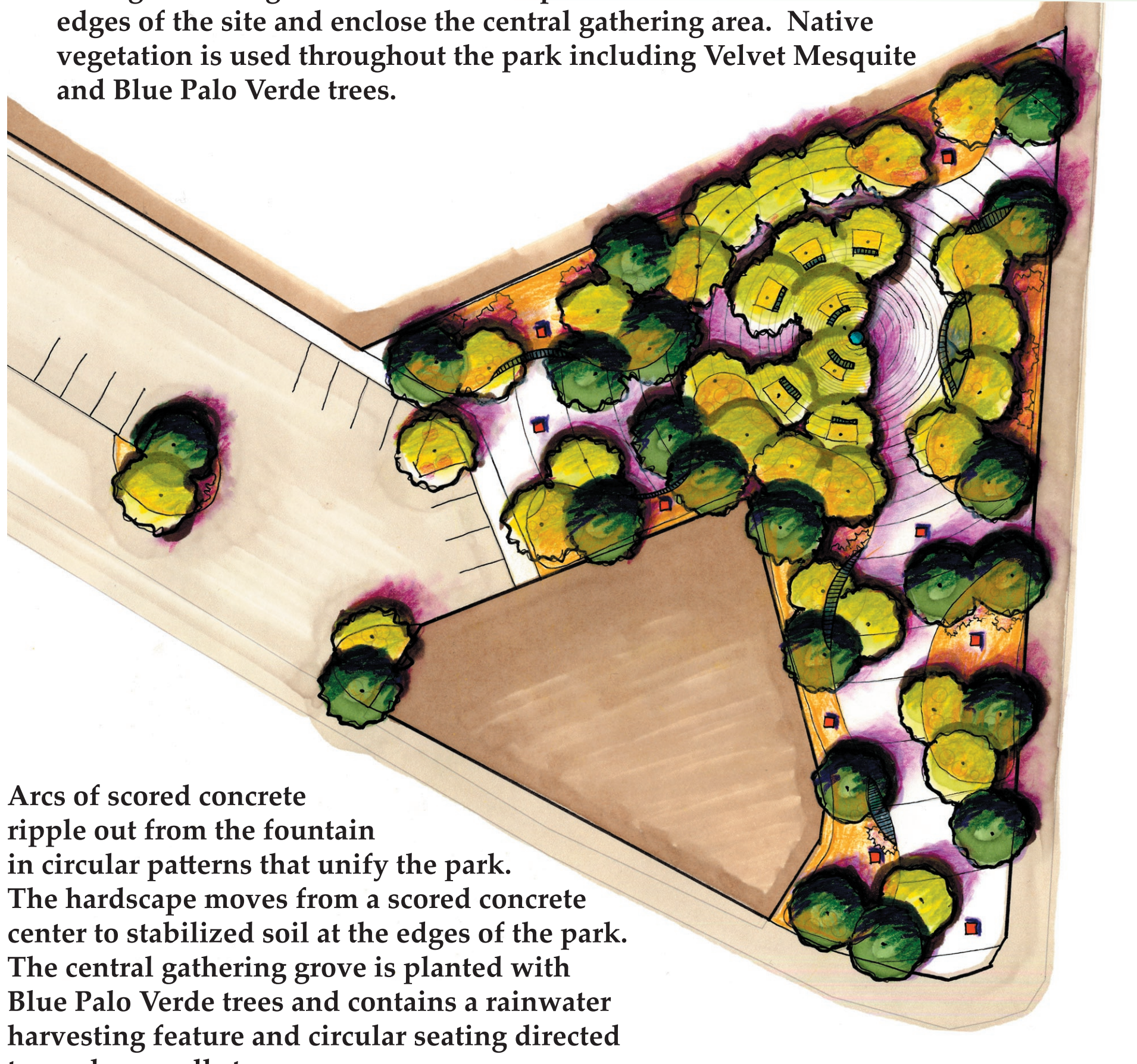


Seating Built Into Berms with Sculptural Element



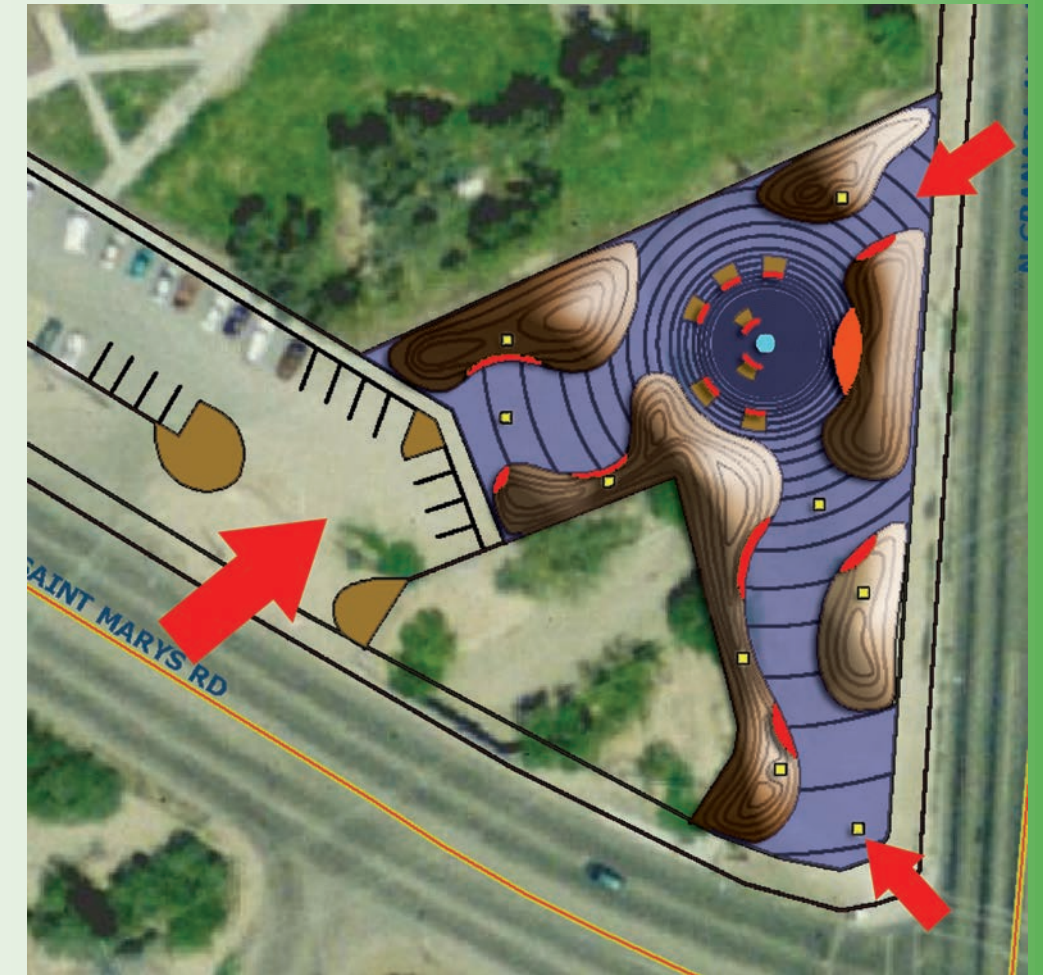


The memorial park contains both formal and informal geometries through utilizing berms and hardscape. Planted berms buffer the edges of the site and enclose the central gathering area. Native vegetation is used throughout the park including Velvet Mesquite and Blue Palo Verde trees.



Arcs of scored concrete ripple out from the fountain in circular patterns that unify the park. The hardscape moves from a scored concrete center to stabilized soil at the edges of the park. The central gathering grove is planted with Blue Palo Verde trees and contains a rainwater harvesting feature and circular seating directed towards a small stage

# Final Master Plan



A vehicular and several pedestrian entrances allow for easy ingress and egress from the park. 12 new parking spaces have been incorporated at the vehicular entry adjacent to Davis School. Sculptures are spaced throughout the site and seating is built into the berms.

*Barrio Anita Memorial Park*  
*Arts for the Cure*